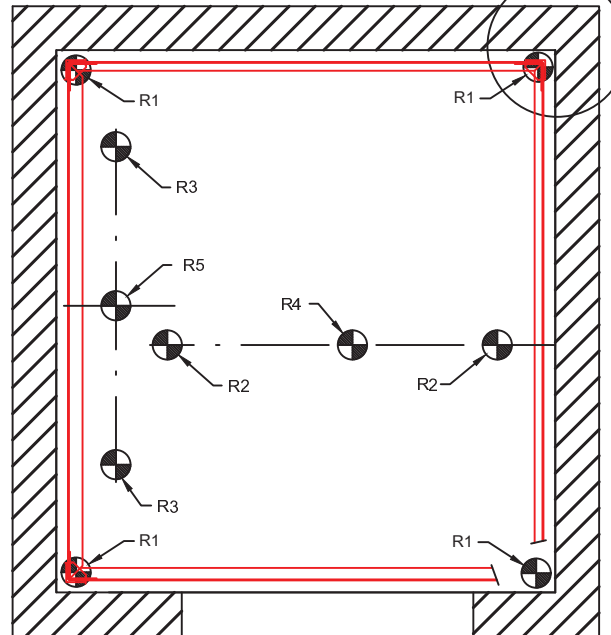
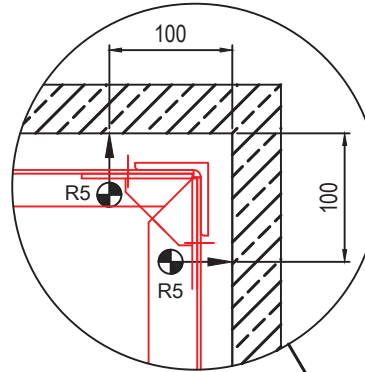
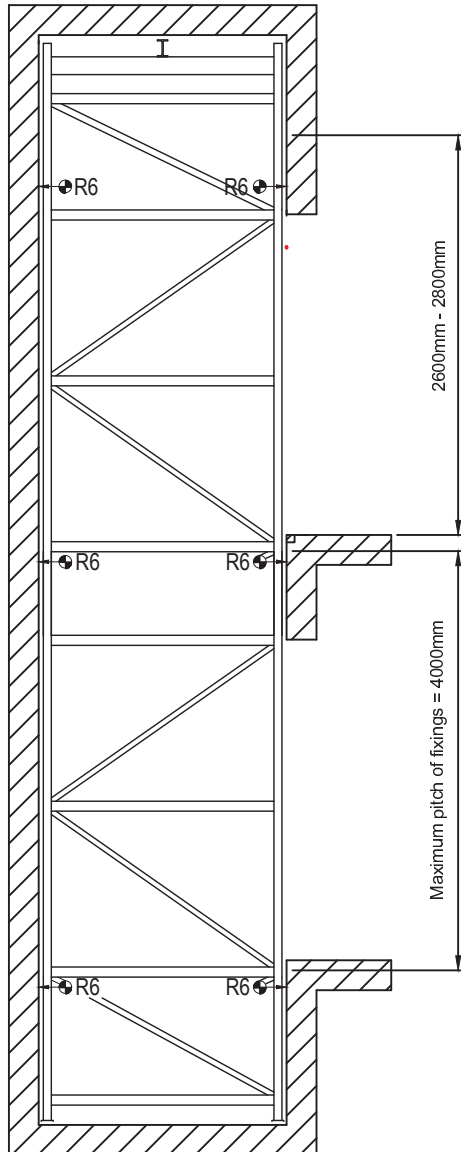


Xtralift 2.0

FX Structure Loads



EQUIVALENT DEAD LOADS IMPOSED DUE TO LIFT OPERATION (kN)

		8 Person
Pit Floor Loadings	R1	9
	R2	30
	R3	23
	R4	63
	R5	53
Side Wall Loadings	R6	2

B - Notes:

- R1 = Dead load at base of structure in each corner
- R2 = Dead load due to car plus load under safety gear operation
- R3 = Dead load below counterweight guides (without counterweight safety gear)
- R4 = Dead load due to car buffering
- R5 = Dead load due to counterweight buffering
- T = Shear load on side wall at each guide bracket
- N = Pull out load on side wall at each guide bracket

Note: Loads R4 and R5 do not act at the same time

Guide brackets are secured using M12 expansion fixings. The shaft must be capable of supporting this type of fixing and the imposed load.

The above figures are for guidance only and can change depending on specification and finishes.
Specific details will be supplied as part of Stannah Lifts Builders Work Drawing

Waiver:

This data sheet is for guidance only and must not be used for proper working drawings. Please contact Stannah Lifts for particular details before proceeding. Owing to our policy of continual improvement we reserve the right to alter specifications and dimensions without prior notice.