

STANNAH LIFTS LTD

TECHNICAL BULLETIN

For the Attention of : Service Engineers, Installers, Training Dept, H & S Manager,
Trade customers

Date : 07/06/2007

Product : System 21 Passenger lifts

Subject : Floor and roof lifting aids

Status : Important Safety Issue

Pages : 1 of 2

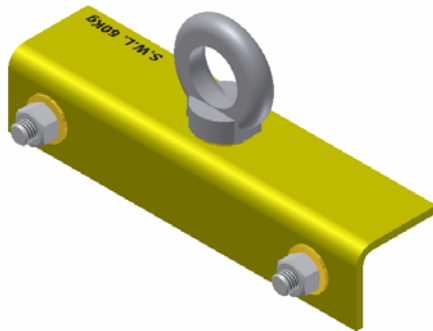
Originator : Stannah Lifts Ltd, Anton Mill, Andover, Hants SP10 2NX 01264 339090

Detail

To ensure that the roof and floor assemblies are handled correctly and safely, two lifting assemblies will be made available (2001075 & 2001077). It is recommended that these lifting assemblies are to be used by installers for lifting roofs and floor assemblies.

Two of each assembly will be issued to each installer.

Floor lifting assembly



Roof lifting assembly

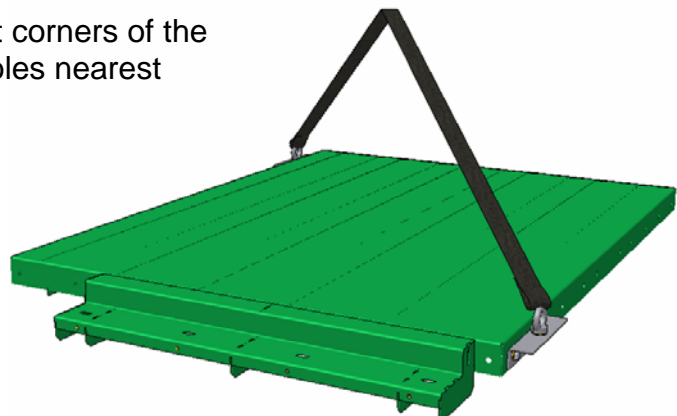


Advised lifting procedure for floor and roof assemblies

Attach each floor lifting plate to adjacent corners of the floor assembly, using the panel fixing holes nearest each corner.

Using shackles and a sling attach the floor to the lifting gear.

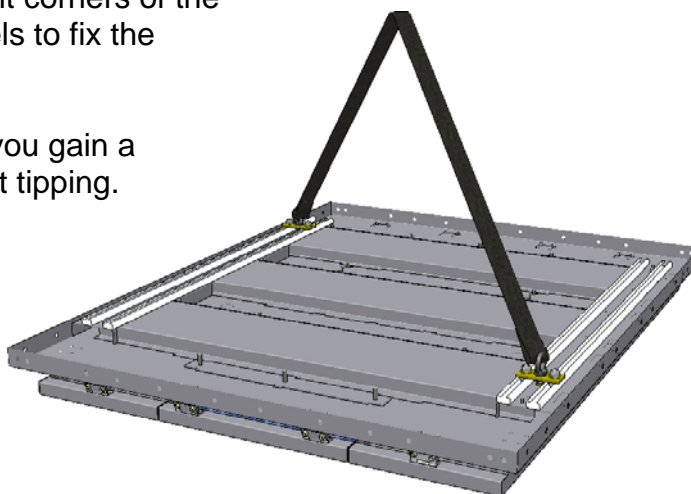
Ensure one person is free to guide the floor into position and keep the load stable, while another operates the lifting gear.



Attach each roof lifting plate to adjacent corners of the roof assembly using the halfen channels to fix the plates in position

Position the lifting assemblies so that you gain a ballanced load and the roof lifts without tipping.

Ensure one person is free to guide the roof into position and keep the load stable, while another operates the lifting gear.



Summary

- It is recommended to use the lifting equipment detailed above to lift floor and roof assemblies during installation.
- Always use the lifting assemblies as a pair.
- Never use lifting assemblies for anything other than roof and floor assemblies.
- Always ensure that two people are present during lifting these loads, one to operate the lifting gear and the second to guide the load and ensure that it is stable.