

To: Stannah Lift Services Ltd – Branch Managers, Phil Beresford, Jon Blight,
Paul Ayers, Trade customers.

Stannah Lifts Safety Bulletin - Update

Issue No: M31(a)

Date: 06/06/06

Page 1 of 3

LIFT TYPE: - Stannah Hydraulic Passenger Lifts with 2:1 Roping

Component Failure

On 12/12/05 Stannah Lifts Ltd issued a Safety Bulletin, ref.no. M31, to inform that they had experienced a problem with a welded steel bracket on an 18 year old lift, which failed due to welds breaking.

The welded bracket is fitted at the base of the tackle pulley assembly which supports the main suspension ropes and secures the top of the piston to the tackle pulley assembly (*see Fig 1 below*). It consists of a 10mm thick flat baseplate, to which are welded two notched angle brackets (approx 6mm thick).

Investigations indicate that this design of bracket was supplied and installed on lifts between 1986 and 1991. Evidence also suggests that the bracket which led to the incident was only partially welded and should have been fully welded as shown in Fig 2.

Only 3 other brackets of identical design/manufacture to Fig 1 (partially welded) have been identified to date in the field. None of these showed any visible signs of potential weld failure but have been replaced as a precautionary measure.

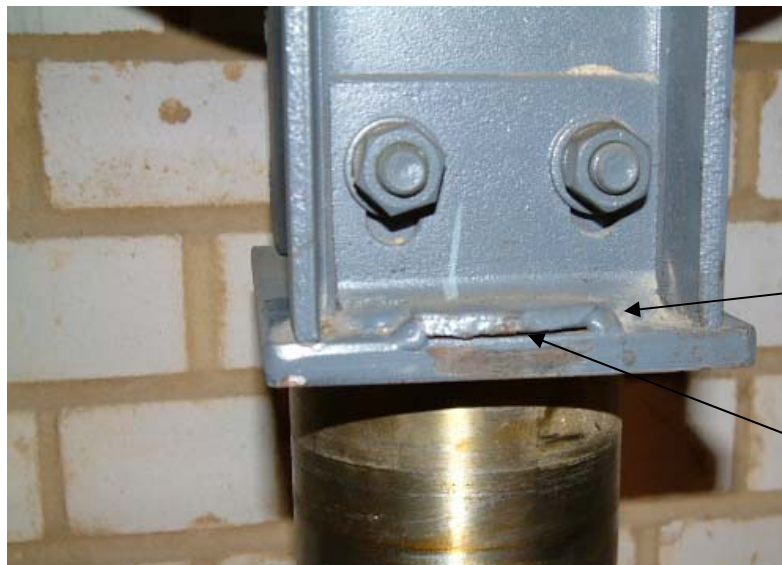


Fig 1

Replacement required

Welded in notched
corners of angle
bracket only

No weld along this
edge

UPDATED COURSE OF ACTION

No further related incidents have been reported. However, as a precautionary measure, it is recommended that all tackle pulley assemblies incorporating brackets identical to that shown in Fig 1 above are replaced with a different design available from Stannah Lifts Ltd.

It is strongly recommended that no full load rupture valve tests be undertaken (as required on LG1 test) on any brackets found to be to Fig 1 above.

Welded brackets of the types shown in Figs 2, 3 and 4 below do not require replacement.



Fig 2
Replacement not required

Bracket as Fig 1
but fully welded -
in notched corners
+ along edge of
bracket.

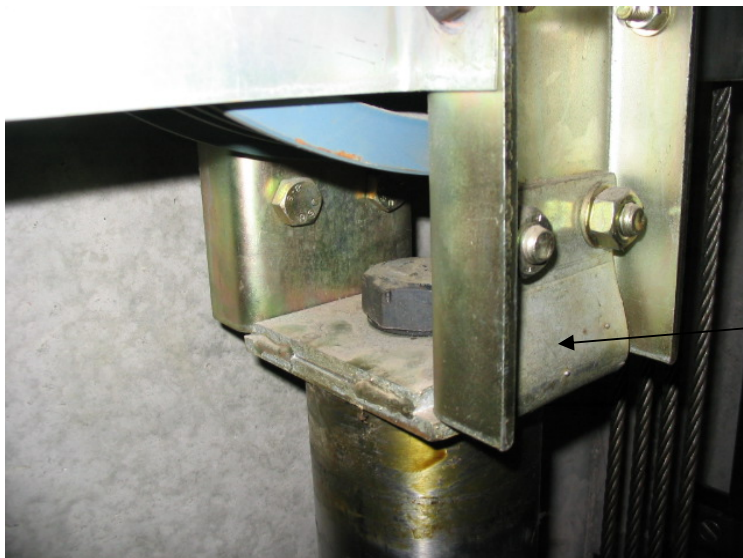


Fig 3
Replacement not required

Folded profile with
plate welded
inside.



Fig 4
Replacement not required

Bracket as Fig 3 but with plate welded underneath incorporating 4 corner spacers

Any replacement brackets for Fig 1 will be supplied free of charge and will be accompanied with a Sequence of Work for installation.

Please contact: Mr Pete Jeffery, Stannah Lifts Ltd., Anton Mill, Andover, Hants, SP10 2NX
Tel 01264 343666