

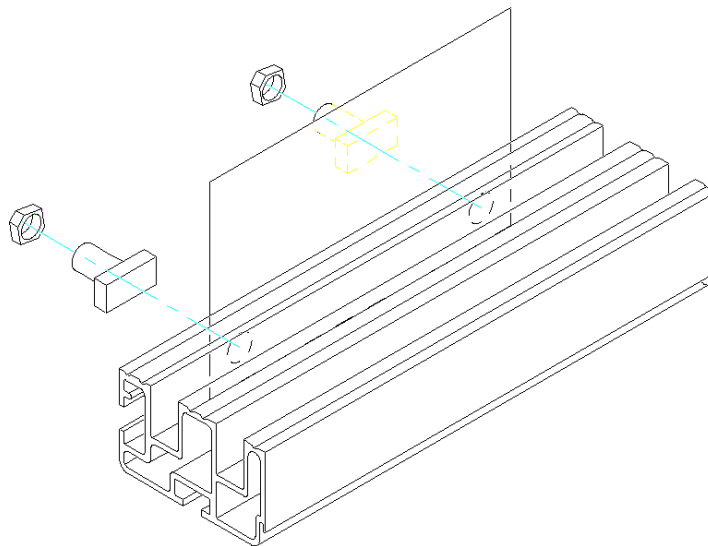
Stannah Lifts Technical Bulletin

Issue No: M21 rev A Date: 11/12/2003 Page: 1 of 1

LIFT TYPE: Hydraulic passenger lift with 2 panel side opening doors

Door sill protector:

Over a period of time, installers have experienced a number of cases of builders, over building onto the landing door tracks of 2PSO landing doors. The results of this lead to installers having to waste their time clearing out the tracks. To avoid this happening Stannah lifts are now providing a door sill protector (prt number 2000440).



Note to installers:

The door sill protector is attached to the front edge of the door track with 2 M8 halfen bolts and 2 M8 nuts (supplied). The protector acts as a physical barrier to over build, and should be positioned on the door track where over build may occur. As over build may occur in the entrance or behind the architrave, position the protector where you think there may be a problem. Slots have now been added to the design so to allow removal.

Any queries relating to this part should be directed to,

Mr Philip Mean, Stannah Lifts, Anton Mill, Andover, SP10 2NX
Tel: 01264 339090 ext 289