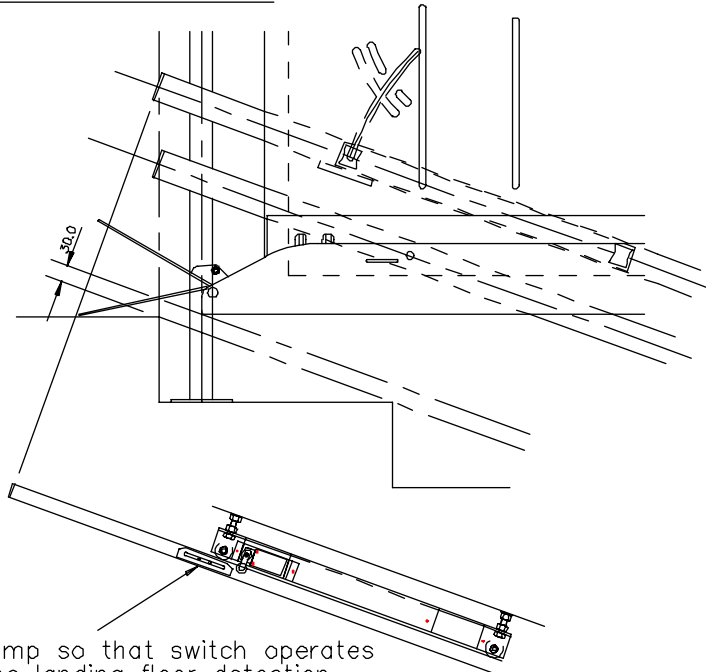


LIFT TYPE:- STANNAH STAIRISER

As from 02/01/01 a design change has been made to the Stannah Stairiser to include a landing zone detection switch. This is shown below:

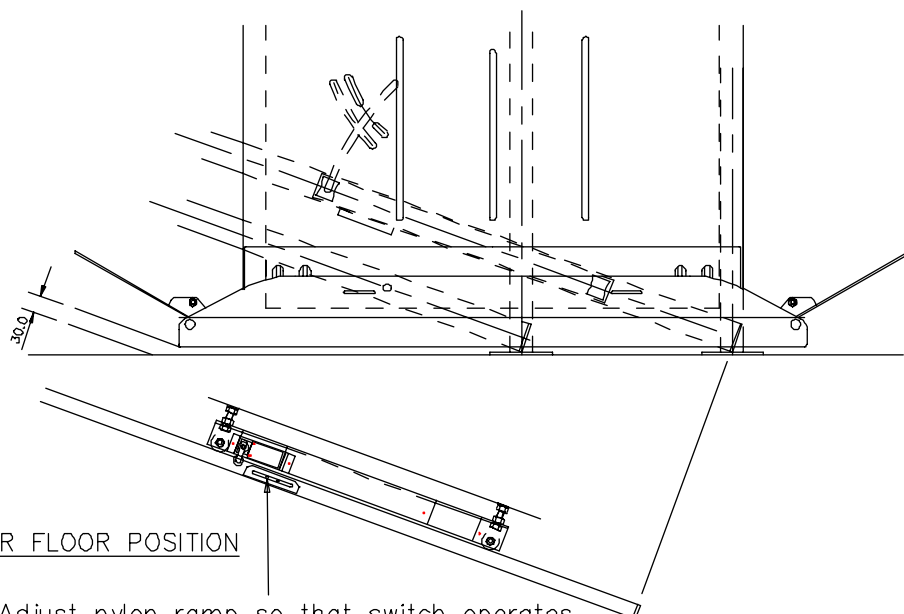
UPPER FLOOR POSITION



Adjust nylon ramp so that switch operates just prior to the landing floor detection switch.

LANDING ZONE DETECTION SWITCH

The landing zone switch is fitted to ensure that power is not available to the barrier arm circuit in between floors. This switch should therefore be activated just before the landing detection switch (located in the top rail) is operated.



LOWER FLOOR POSITION

Adjust nylon ramp so that switch operates just prior to the landing floor detection switch.