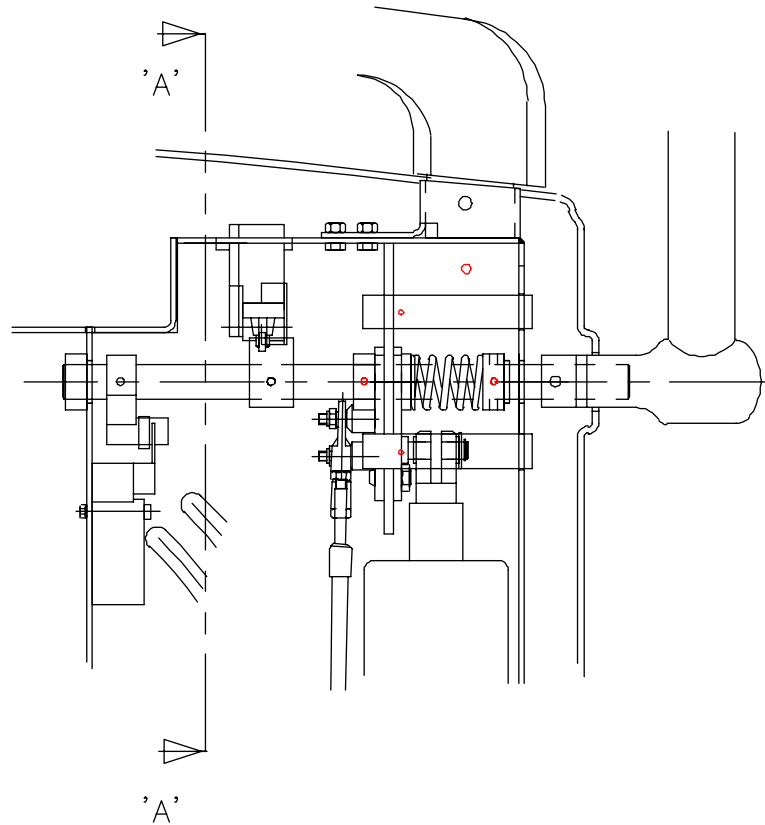


**LIFT TYPE:- STANNAH STAIRISER**

As from 02/01/01 a design change has been made to the Stannah Stairiser to include a barrier arm safety switch. This is shown below:



**BARRIER ARM SAFETY SWITCH**

This switch is fitted to ensure that power to the unit is cut when any manual operation of the barrier arm is undertaken. This eliminates being able to drive the unit up or down the stairs with either barrier arm in the open position.

Adjust cam so that switch is operated after about 5° of movement as shown.

