

TB 192

TECHNICAL BULLETIN

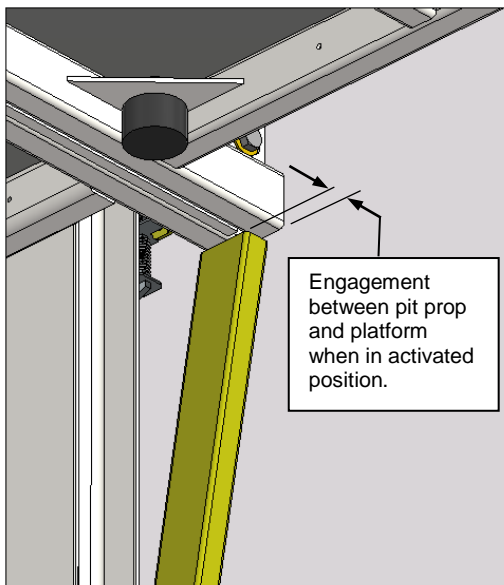
SAFETY ISSUE

For the Attention of:	Service Engineers, Platform Lift Installers, Trade Customers, Export Customers, Training Dept, Spares Dept.
Date:	11/01/2024
Product:	Stannah Midilift SL & GL (hydraulic open platform lifts) manufactured from September 2009.
Subject:	Engagement between pit prop and underside of platform
Pages:	5

Originator: Stannah Lifts Ltd, Anton Mill, Andover, Hants SP10 2NX 01264 339090

Note: The requirements of this Technical Bulletin are in *addition* to those stated in TB189, issued in December 2022, whereby instructions were given to inspect the material thickness of the pit prop leg.

1. Introduction:



The pit prop acts as a mechanical blocking device to enable the platform to be held in a raised position creating a safe refuge space of 500mm high between the pit floor and the lowest part of the platform. This refuge space may be required in the very unlikely event that the platform unexpectedly descends, due to a system failure with inspection/maintenance personnel under the platform.

The design of the pit prop on the Stannah-manufactured Midilift SL and GL platform lift has remained largely unchanged since its inception in 2009. A recent review of the arrangement has uncovered that it is theoretically possible to have insufficient engagement between the activated pit prop and the underside of the platform due to on-site adjustments and variables in manufacturing.

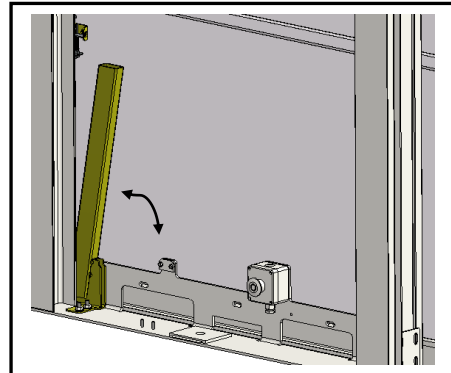
No checks for effective mechanical blocking of the platform are currently included within our commissioning tests before handover. However, the electrical safety switch provided with the pit prop is tested during the commissioning of the lift to ensure effective disabling of platform and landing controls when the prop is activated.

For this reason, no person(s) should occupy the lift pit on the affected products until an inspection has been conducted to verify that the pit prop leg has sufficient engagement with the underside of the platform (i.e. 10mm min) when in the activated position

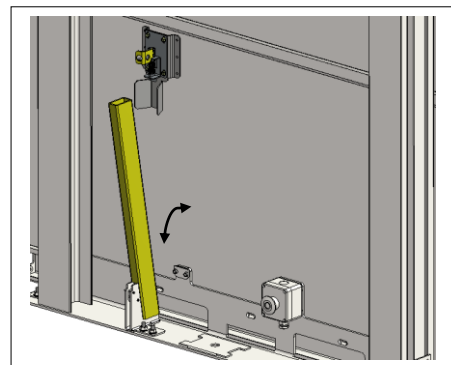
Note: The inspection must be carried out without personnel gaining access below the platform (see following procedure).

2. Scope:

This bulletin relates to Stannah Midilift SL & GL (hydraulic open platform lifts) manufactured from Sept 2009 to August 2023 where the operation of the pit prop is parallel to the guide rails.



Exemptions: This bulletin *does not apply* to Midilift SL & GL models manufactured between June 2012 to March 2015 where the operation of the pit prop is perpendicular to the guides.



It also does not apply to Midilift cabin models (XLplus, SLplus or Piccolo).

3. Inspection:

When to inspect:

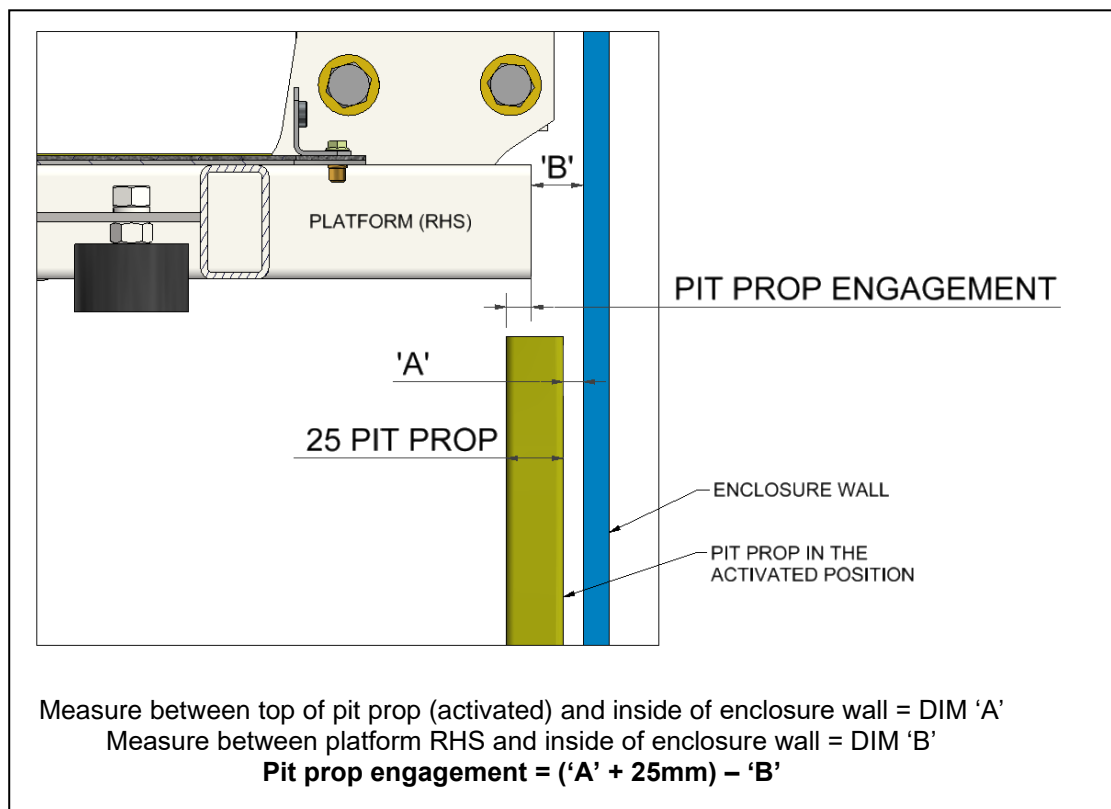
The pit prop does not affect the normal safe use of the product by the end user. However, the inspection must take place before any persons enter the pit space, i.e. when resuming installation, at the next callout for repair, the next insurance inspection, the next scheduled service visit or any other work on site that involves persons needing to gain access to the pit space below the lift platform.

Safe access for inspection (without accessing pit space):

The following procedure is recommended for inspecting the pit prop:

1. Position the lift at a height where the underside of the platform clears the pit prop by 10mm - 40mm.
2. Isolate the mains electrical supply and lock off, tag off.
3. Close the shut-off valve on the hydraulic power pack.

4. Open the lower door using the emergency release key and gain access to the platform deck.
5. Remove the carriage cover panel/console (remove 2 screws at the bottom, un-hook by lifting upwards).
6. Reaching through the carriage, operate the release catch to permit the pit prop to drop down from its storage position adjacent to the guide rail (at this point the prop wall thickness can be checked as detailed in previous technical bulletin TB189).
7. **Measurements:** Determine the engagement between the pit prop, in its activated position and the underside of the platform as shown below:



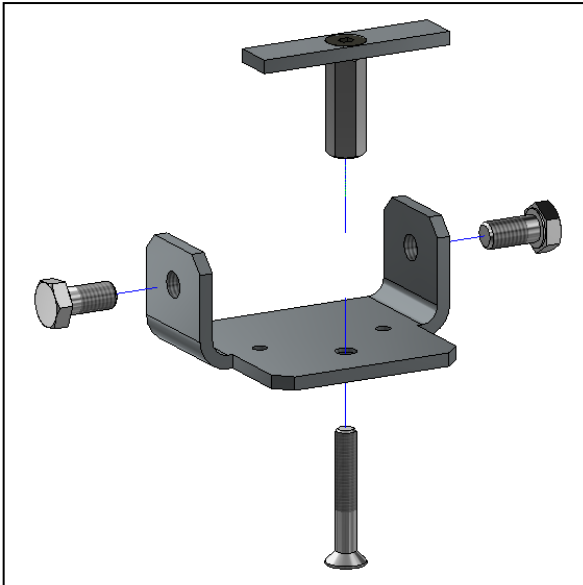
8. If the pit prop engagement is 10mm or more then no corrective action is required and the lift can be returned to service by reversing steps 6 to 2 above. Access to the pit is then permitted by following all standard operating procedures for the product.
9. **If the pit prop engagement is less than 10mm then no persons are permitted access to the lift pit until a retrofit extension clamp has been fitted to the underside of the platform.**

4. Corrective Action:

Replacement parts:

A clamp extension bracket is available for retrofitting on site when the pit prop engagement is found to be less than 10mm. This clamp is to be fitted to the platform, requires no drilling and can be installed in a few minutes (see images below).

Please contact LiftsSpares@stannah.co.uk to arrange the supply of a clamp extension bracket - **Stannah Lifts part number 6104120**



Clamp extension bracket - retrofit kit
Stannah Lifts part no. 6104120



Clamp extension bracket assembled to
platform to increase engagement between
pit prop and underside of platform.

The clamp extension bracket must be assembled from the platform deck using steps 1 to 5 in Section 3.

After fitting re-check that the pit prop engagement is at least 10mm minimum.

5. Summary:

- The amount of engagement between the activated pit prop and the underside of the platform is to be checked on Stannah Midilift SL/GL models.
- Access to the pit is forbidden on Stannah Midilift SL & GL products until an inspection (from the platform deck) has verified that the requirements of this TB192 and previous TB189 have been met.
- Retrofit a clamp extension bracket where an activated pit prop will not engage with the underside of the platform by at least 10mm.
- Replace any 2mm wall tube (measured as <3mm) with the correct 3mm wall tube (measured as $\geq 3\text{mm}$).

6. Reference Documents:

Read in conjunction with Technical Bulletin TB 189 issued 12/12/2022
Hazard Analysis HA24
Test Report TR148 for clamp extension bracket - retrofit