

TB 189

## TECHNICAL BULLETIN

### SAFETY ISSUE

**For the Attention of :** Service Engineers, Installers, Trade Customers, Export Customers, Training Dept, H & S Manager, LEIA

**Date :** 12/12/2022

**Product :** Stannah Midilift SL & GL (hydraulic platform lifts) manufactured after July 2019

**Subject :** Pit prop inspection/replacement before entering pit

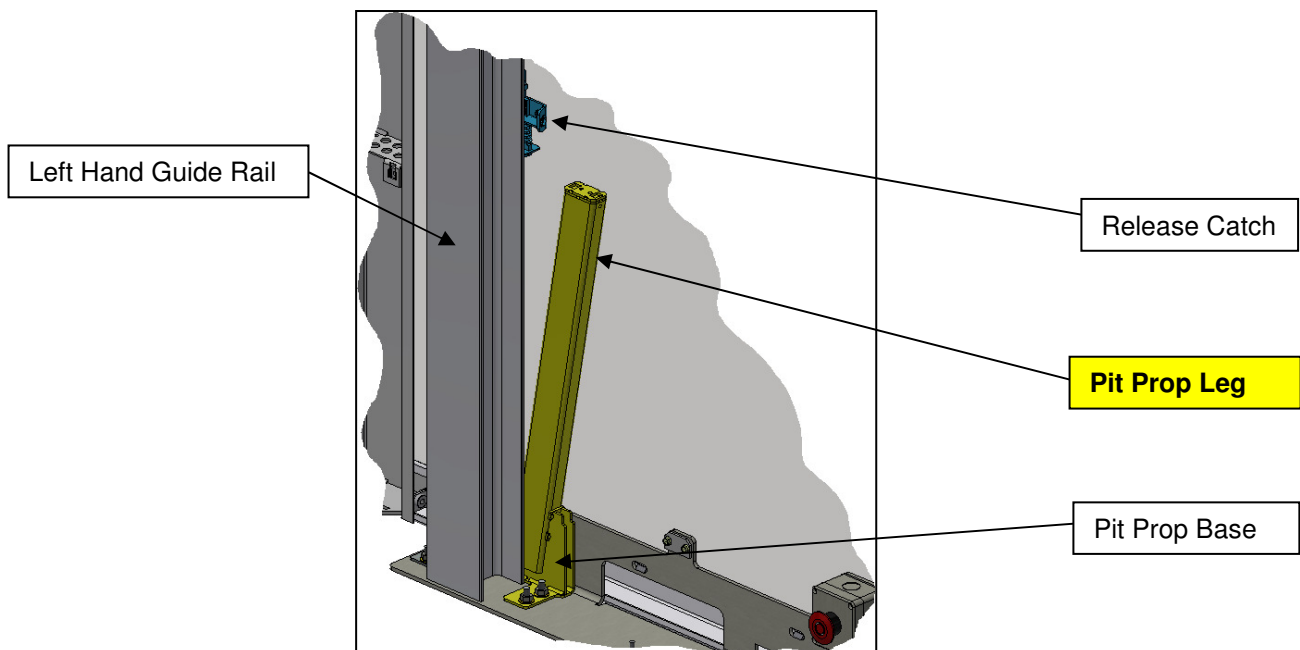
**Pages :** 4

**Originator :** Stannah Lifts Ltd, Anton Mill, Andover, Hants SP10 2NX 01264 339090

#### Introduction:

Recent quality audits conducted at our factory have identified a number of pit prop legs that have been manufactured from the incorrect size material (2mm wall thickness rather than intended 3mm wall). These pit prop legs are used on Stannah manufactured Midilift SL & GL hydraulic platform lifts.

**Until further notice, no person(s) should occupy the lift pit on the affected products until you have conducted an inspection to verify that the pit prop leg has been manufactured from the correct size material. Note: The inspection must be carried out without personnel gaining access below the platform (see procedure below).**



Although the thinner walled tube has been demonstrated to meet the strength requirements of EN81-41, the design integrity/stability is compromised due to the pit prop leg being a much looser fit on the corresponding base assembly.

## Scope:

Although this manufacturing error has been identified on recent production, the opportunity for this to have happened previously dates back to August 2019 (when the thinner wall tube was first stocked at the factory). Therefore, Stannah Lifts are issuing this bulletin to inspect all lifts manufactured after July 2019. Applicable installation teams, service branches, trade customers and export customers will be supplied with a list of lifts that are affected within their remit.

*This bulletin does not apply to Midilift cabin models (XLplus, SLplus or Piccolo). Tests have been conducted on the pit props used on these models, with thinner walled tubes (2mm thick), and have been verified as both strong enough and stable due to the retention of the pit prop leg with a pivot bolt and positive location on the cabin guide rail.*

## When to inspect:

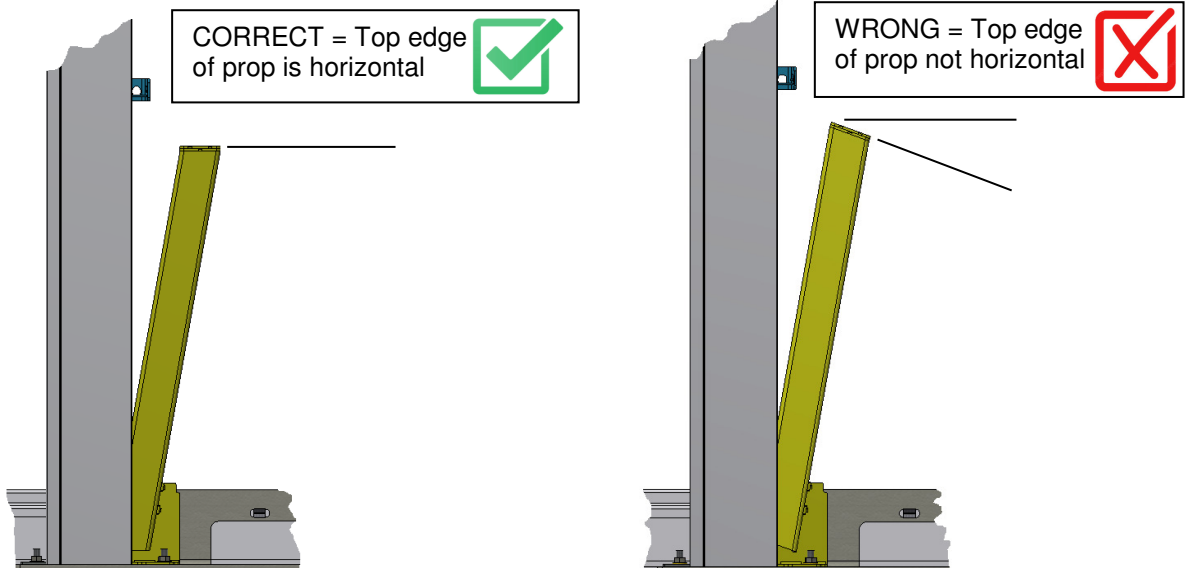
The pit prop does not affect the normal safe use of the product by the end user. However, the inspection must take place before any persons enter the pit space, i.e. when resuming installation, at the next callout for repair, the next insurance inspection, the next scheduled service visit or any other work on site that involves persons needing to gain access to the pit space below the lift platform.

## Safe access for inspection (without accessing pit space):

The pit prop must be inspected using the following procedure:

1. Position the platform at the lowest landing level.
2. Isolate mains supply and lock off, tag off.
3. Close ball valve on the hydraulic power pack.
4. Remove the lower carriage cover (remove screws at the bottom, un-hook by lifting upwards).
5. Reaching through the carriage, operate the release catch to permit the pit prop to drop down from its storage position (left hand guide rail).
6. Remove the pit prop leg by lifting it up off of the base assembly.
7. Measure the pit prop wall thickness to determine if the pit prop is made from the correct size tube. *Note: on outdoor lifts, the upper end of the pit prop leg has a cap welded to it, so it will be necessary to inspect the lower end of the tube to measure tube thickness.*
8. **If the pit prop leg is made from the wrong tube size, no persons are permitted access to the lift pit until a correctly manufactured replacement prop is installed.**

9. If the prop is made from the correct size tube, the lift can be returned to service by reversing steps 6 to 2 above. **Ensure the prop is orientated correctly in the base assembly, see images below.** Access to the pit is then permitted by following all standard operating procedures for the product.



10. Record the findings of the inspection and corrective action taken (where applicable) on the product service/maintenance log card.  
 11. Report the outcome of the inspection to Stannah Lifts (see 'Record Keeping' on page 4 of this bulletin)

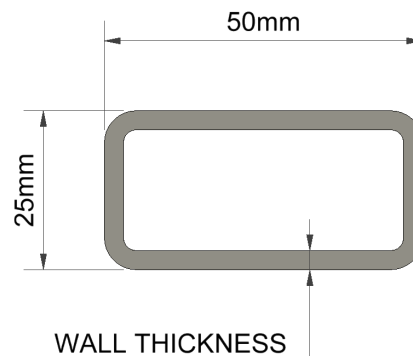
### Measurements:

The thickness of the tube should be measured at the tube end. It should be possible to determine if the tube has a wall thickness of 2mm or 3mm by use of a tape measure/rule with 1mm incremental marks.

There may be a seam on the internal faces of the tube, ensure the measurement is taken at least 6mm away from any seam. There may also be a localised build-up of paint at some points on the end of the tube; measurements should be taken at points where paint is at its thinnest coating.

**Any tube that is found to be less than 3mm thick must be removed then disposed of and replaced with a 3mm thick tube.**

If there is any doubt over the wall thickness measurement, always replace with a 3mm tube.

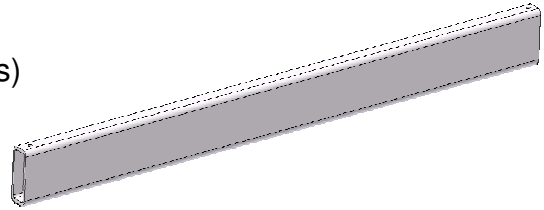


## Replacement parts:

Replacement pit props will be made available where required. To minimise return visits to site, Stannah will provide an advance supply of replacement pit props to each branch/trade/export customer affected. Please contact [stairliftservicesupport@stannah.co.uk](mailto:stairliftservicesupport@stannah.co.uk) to arrange for supply of any additional replacement pit props if more are required.

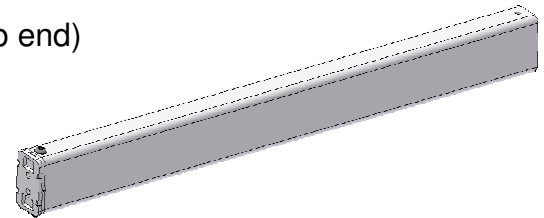
The parts supplied are either:

- Indoor models 6103835 (open both ends)



- Outdoor models 6103838 (capped at top end)

Please ensure that capped versions are used on outdoor models as these variants have a protective undercoat, as well as the cap, to offer better corrosion resistance.



## Record keeping:

To enable Stannah to keep a record of inspection findings and corrective actions, please record for each lift:

- date of inspection
- the tube size found on site (2mm or 3mm)
- date that a 3mm replacement tube was fitted (when applicable)

Stannah ask that you kindly report these details to:

[stairliftservicesupport@stannah.co.uk](mailto:stairliftservicesupport@stannah.co.uk)

## Summary

- A number of pit prop legs made from the wrong size tube have been identified during quality inspections at the Stannah factory
- Access to the pit is forbidden on Stannah Midilift SL & GL products until an inspection (from on the platform deck) has verified a correctly manufactured prop is fitted
- Do not enter the pit if a defective prop is identified
- Replace any 2mm wall tube (measured as <3mm) with the correct 3mm wall tube (measured as  $\geq 3$ mm).

If in doubt, do not enter the pit. Contact your manager for guidance.