

**TB 185**

## **TECHNICAL BULLETIN**

### **SAFETY ISSUE**

---

**For the Attention of :** Installers, Trade Customers, Training Dept, H & S Manager

**Date :** 25<sup>th</sup> April 2022

**Product :** Midilift GL, SL, SLplus & XLplus

**Subject :** Installers Working Platforms - Back Frame Non-Conformance

**Pages :** 3

---

**Originator :** Stannah Lifts Ltd, Anton Mill, Andover, Hants SP10 2NX 01264 339090

---

### **Detail**

The manufacturer of the Midilift 'working platform' has recently advised Stannah Lifts of a deviation that was made during manufacture on a number of back frames.

On these incorrectly manufactured back frames, the fixing points for the hook plates were positioned too high up. The manufacturer subsequently trimmed the top of the hook plates off to permit the back frames to be used.

This deviation was never approved by Stannah Lifts and as such has never been subjected to formal approval or verification tests. As a result, the structural capacity of the hook plate cannot be deemed sufficient without a thorough review first taking place.<sup>1</sup>



**Therefore, any platform with an incorrect back frame must be withdrawn from use immediately until further notice.**

The following actions are required:

1. Custodians of working platforms must measure and report some key dimensions that will enable Stannah Lifts to determine if the back frame is correct or not – see Appendix A of this bulletin.
2. Incorrect back frames must be withdrawn from use immediately (all products) until further notice. \*

---

<sup>1</sup> The incorrectly manufactured back frames also prevent the fitting of the hook plate packer modification detailed on the recently issued technical bulletin TB183.

3. Working platforms with correct back frames can continue to be used on Midilift SL and GL products only. Stannah Lifts will then supply the hook plate modification kit and once this has been fitted these working platforms can be used on any Midilift product. Refer to TB183 for full details of this kit.

\* Stannah Lifts are actively progressing remedial actions to enable these units to be either replaced or verified for continued use in their current form. Any future actions will be communicated to affected persons as soon as possible.

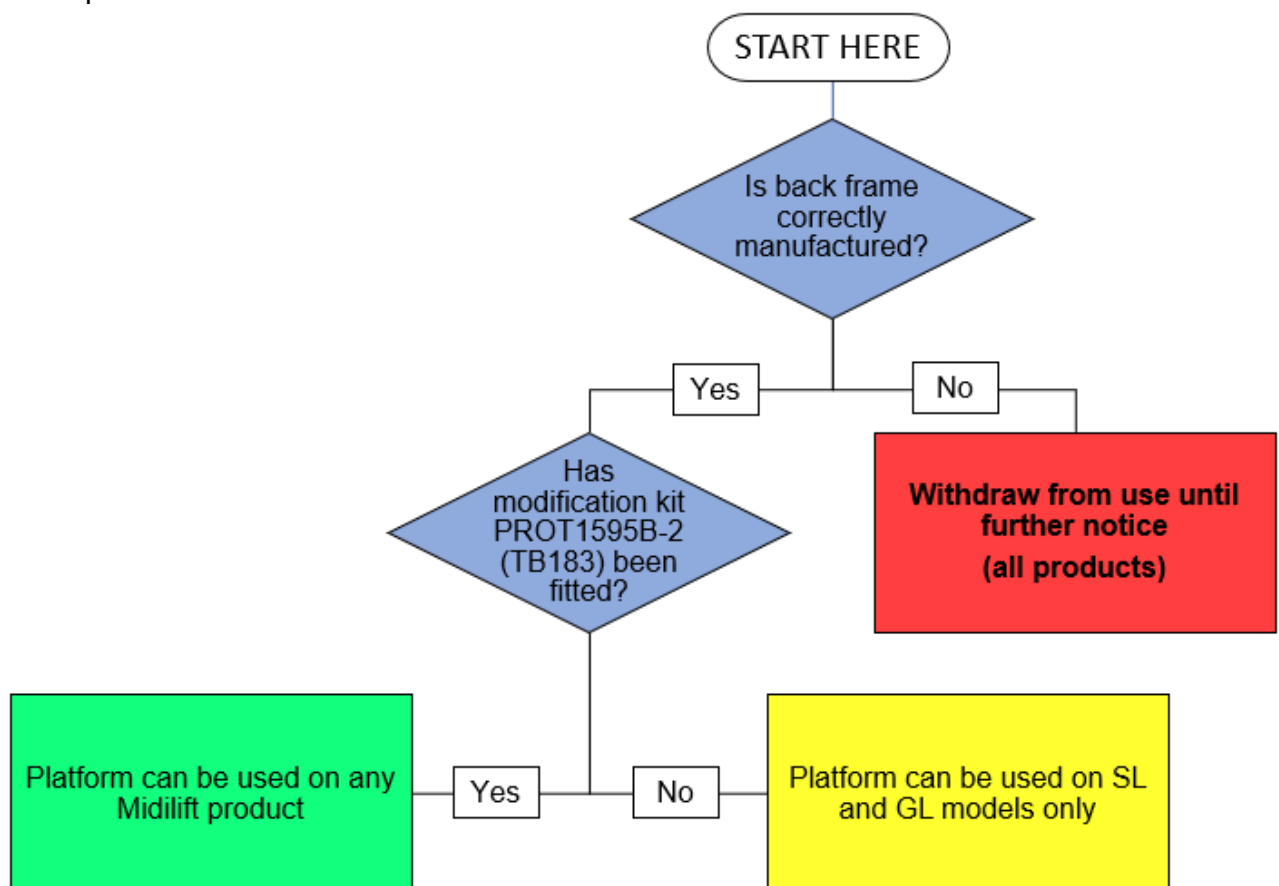
## Summary

Please inspect each platform in your remit and report dimensions A through to E at the earliest opportunity (see Appendix A of this bulletin). **Until a platform is confirmed as having a correct back frame it must not be used until further notice.**

Dimensions should be reported to:

- Direct Installation teams - Jo Walsh (Operations Manager)  
[jo.walsh@stannah.co.uk](mailto:jo.walsh@stannah.co.uk)
- All other working platforms - Kelly Hurst (Customer Support Manager)  
[kelly.hurst@stannah.co.uk](mailto:kelly.hurst@stannah.co.uk)

Graphical overview of actions:



Appendix A – Inspection drawing for hook plate dimensions

