

TB 183

TECHNICAL BULLETIN

SAFETY ISSUE

For the Attention of : Installers, Trade Customers, Training Dept, H & S Manager

Date : 14th April 2022

Product : Midilift GL, SL, SLplus & XLplus

Subject : Modification to installers Working Platforms

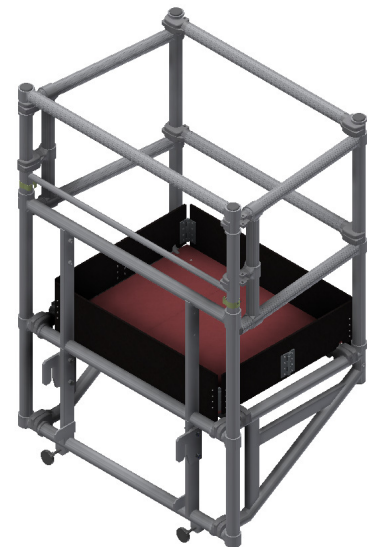
Pages : 3

Originator : Stannah Lifts Ltd, Anton Mill, Andover, Hants SP10 2NX 01264 339090

Detail

A recent incident report has highlighted that the temporary working platform (used during installation of the products listed above) has required a modification to enable it to fit correctly on to the Midilift cabin products.

There is an adopted modification, whereby packers are added to increase the pitch between the hook plates to enable its use on the cabin sling. However, this modification appears to have never been formally documented. As a result, modifications have been undertaken on site that may result in an inadequate/unsafe working platform arrangement (for example, packed too far apart, wrong grade bolts, insufficient bolt length, insufficient thread engagement etc).



Therefore, Stannah Lifts have produced a kit of parts and instructions that will enable each working platform to be modified in the correct manner to a common specification. No specialist tools are required and the simple modification can be achieved in 5-10 minutes.

A suspension notice¹ is in place to stop the use of all working platforms on Midilift cabin models until the approved modification kit has been fitted.

Once the approved kit of parts has been fitted, the platform can be used on any Midilift model (i.e. the packers do not prevent its use on the SL and GL products).

¹ 'Suspension notice' denotes a temporary prohibition notice.

Although installation teams who work solely on Midilift SL and GL models could continue to use the platform with its original fixings and without packers, it is recommended that all working platforms be modified with the approved kit of parts (so that they are configured for use on any Midilift installation).

Working platforms supplied after the date of this bulletin will be supplied either with the kit of parts in a bag (for modification on site) or pre-fitted to the working platform.

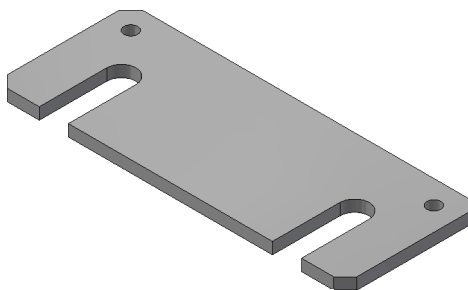
Summary

All working platforms are to be modified using the approved kit of parts and the instructions on drawing "WORK PLATFORM MOD 1" (see Appendix A on page 3 of this bulletin).

Kits will be supplied to known custodians of working platforms. If you do not receive a kit please contact either Liam Goddard (Stannah direct installers) or Nick Powell (trade customers).

Platforms that are not in compliance with this drawing must not be used in any circumstances.

Kit Contents (ref. PROT1595B-2)



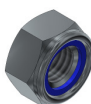
PROT1595A - 5mm thick packer (2 off)



M10 x 70 hex head bolt, grade 8.8, BZP - ISO 4014 (4 off)



M10 flat washer form A, BZP - ISO 7089 [DIN 125] (8 off)



M10 nyloc nut type T, grade 8, BZP - ISO 10511 [DIN 985] (4 off)

Appendix A – Drawing “WORK PLATFORM HOOK MOD”

