

# Telefax Transmittal



**TO:** Duncan LeFeuvre  
Stannah Lifts

**FROM:** Des Mullin

**DATE:** May 29, 1997

**SUBJECT:** EMI Safety Notice

**PAGES:** 7 (Including transmittal form)

---

## IMPORTANT SAFETY NOTICE

Dear Duncan,

The enclosed package describes an important safety issue concerning GSL-1 and GSL-3 Stair-Lifts shipped to your company in the early part of 1997. Details are explained in the attached Safety Bulletin.

Also attached with this package is a complete list of units which were shipped to you and which require corrective action. Because of the potentially serious safety hazard that could occur, we request that this bulletin be distributed to your field technicians and that this repair work be carried out immediately. The required modifications are easily done and require two wire connectors. The actual work should take less than 30 minutes per lift.

Use the 3 copies of the enclosed installation list as follows:

1. Keep this copy for your field work record.
2. Send this copy back to us, indicating that the changes have been made and the dates the work was done.
3. Review the contact name and update it with the correct information.

You will be reimbursed \$30.00 per unit for by-passing the filter circuit and \$30.00 per hour for time involved in travelling to the lift location. Please try to combine several units in one trip.



Page Two

Submit your claims for compensation to Garaventa Customer Service. Include the lift serial numbers confirming that the work has been completed. A credit note for these costs will be issued to your account.

We feel it is important to and act immediately to protect lift users. Your co-operation in removing this problem is appreciated. Note that this issue does not apply to GSL-2 Stair-Lifts.

Yours truly,

Garaventa (Canada) Ltd.

A handwritten signature in black ink, appearing to read "Des Mullin".

Des Mullin  
Customer Service Manager

May 27, 1997



# GARAVENTA SAFETY BULLETIN

Garaventa (Canada) Ltd.  
7505 - 134A Street  
Surrey, BC V3W 7B3

Phone: (604) 594-0422  
(800) 663-6556

Fax: (604) 594-9915

Internet address:  
[www.garaventa.com](http://www.garaventa.com)

U.S. mailing address:  
PO Box 1769  
Blaine, WA 98231-1769

**PLEASE READ IMMEDIATELY!**

## IMPORTANT SAFETY ISSUE RELATED TO GSL-1 & GSL-3 STAIR-LIFT CONTROL CIRCUITS

**GARAVENTA HAS IDENTIFIED A PROBLEM WITH THE CONTROL CIRCUITS OF GSL-1 & GSL-3 STAIR-LIFTS WHICH COULD RESULT IN INJURY TO USERS. IN THIS BULLETIN WE RECOMMEND THAT IMMEDIATE STEPS BE TAKEN TO RECTIFY THIS PROBLEM**

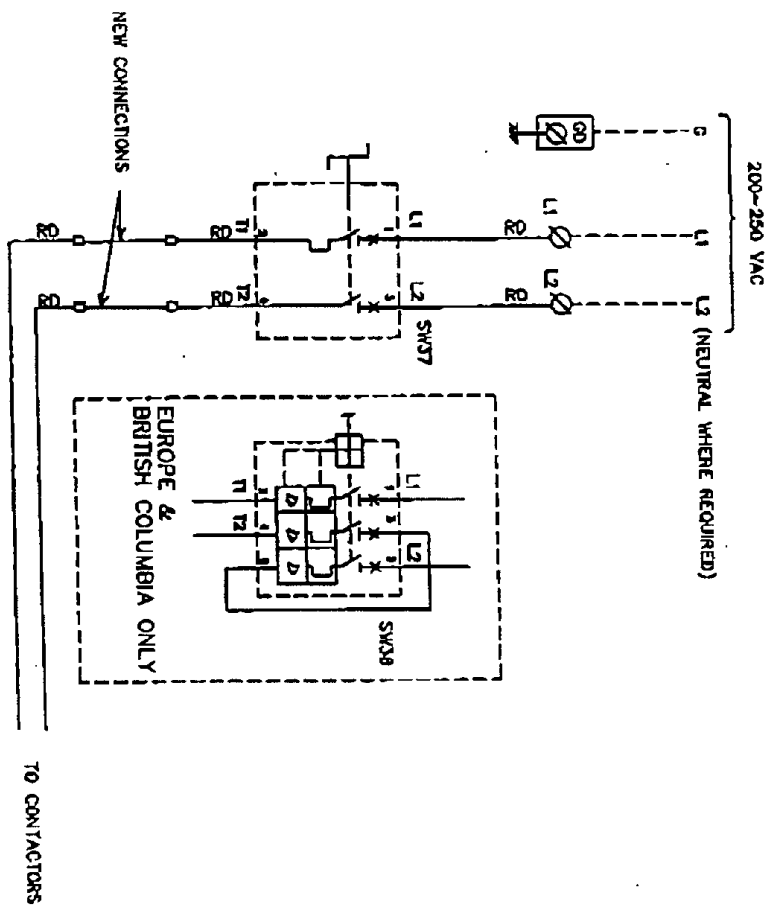
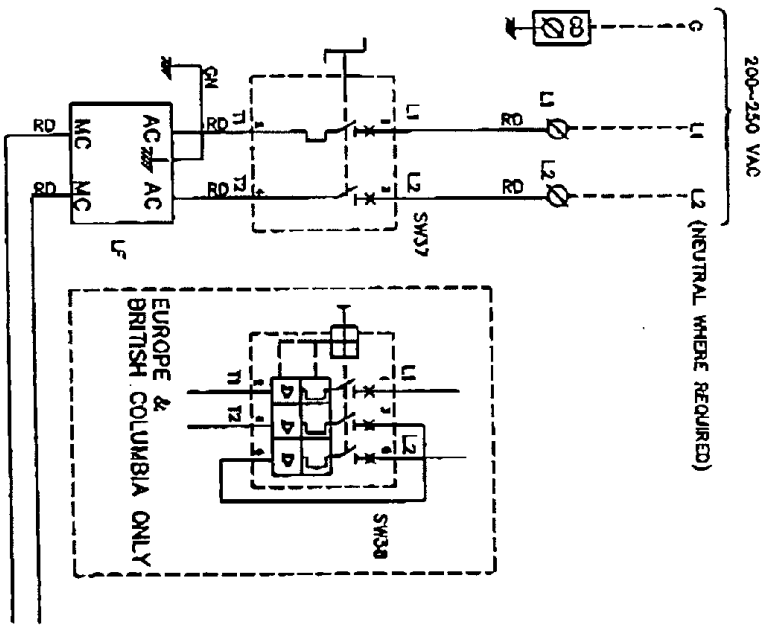
Electro Magnetic Interference (EMI) reduction measures were added to Stair-Lifts in January of this year as required for CE certification in Europe. Since then we have experienced sporadic failures of motor control and safety contactors. We have been able to find a direct relation between these failures and the EMI filter device installed in the mains power circuit of GSL-1 and GSL-3 lifts.

Although unusual, these failures are of concern because the contactors may fail in the closed condition (weld). In some cases the motor controller (SCR) may also fail. Under certain circumstances, the failure of all three of these devices can lead to a safety problem. If both contactors KB and KC weld, and the SCR fails in a certain mode of operation, the lift may travel on its own. **THIS SITUATION COULD RESULT IN SERIOUS INJURY TO A STAIR-LIFT PASSENGER OR STAIRWAY PEDESTRIAN.**

Fortunately the solution to this problem is very simple. By removing the EMI filter from the circuit the failures are eliminated. **THE LINE FILTERS INSTALLED IN ALL GSL-1 AND GSL-3 STAIR-LIFTS MUST BE DISCONNECTED IMMEDIATELY. A LIST OF UNITS SHIPPED TO YOU WITH EMI FILTERS IS ATTACHED.**

The EMI filter is located in the back of the drive box itself. It has the words "RFI (EMI) Filter" on its surface. It is silver in colour. By removing  $L_1$  and  $T_1$  and joining them together and then by doing the same with  $L_2$  and  $T_2$  the device is by-passed. The attached drawings explain how to do this change. Disconnecting this device will not affect the operation of the lift. Please do not remove it from the box. We are designing a retro-fit package which will allow the filter to be re-connected in the future, if necessary.

If you have any questions related to this issue please contact Garaventa Customer Service at 1-800-667-7790.



VALID FOR GSL-1/3, GSL-1CD AND GSL-2