



SYSTEM 21 PASSENGER LIFTS

NEW CAR FINISHES INSTALLATION GUIDE

MAXILIFT M

2800220



SYSTEM 21 PASSENGER LIFTS

MAXILIFT M

Index

-1	Car Panel Assembly	3
-2	Roof Assembly	5
-3	Handrail Assembly and Fixing	7
-4	Mirror Finishes	11

Introduction

This guide is to help Installers understand the new installation requirements of the New System 21 Maxilift M Car Finishes. It is not intended to be exhaustive in detail and assumes that the installer already has a sound working knowledge of Stannah Passenger Lift installations or has at least been trained to the appropriate standard for installing System 21 Car Finishes. The guide can be used as a whole document or each section can be used in isolation as technical data sheets. All dimensions shown are based upon an 8 person Lift example only. If further dimension are required then call the number given below.

**If in doubt call Stannah Lifts Ltd
Mechanical Design Department
01264 339090**



SYSTEM 21 PASSENGER LIFTS

CAR PANEL ASSEMBLY GUIDE

MAXILIFT M

2800220-1

Refer to Max M Car Panel Assembly Drawing 2800223-2

Preparation

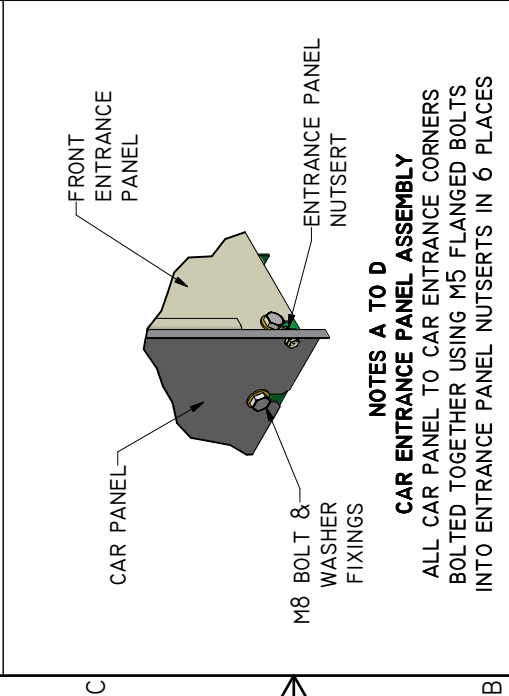
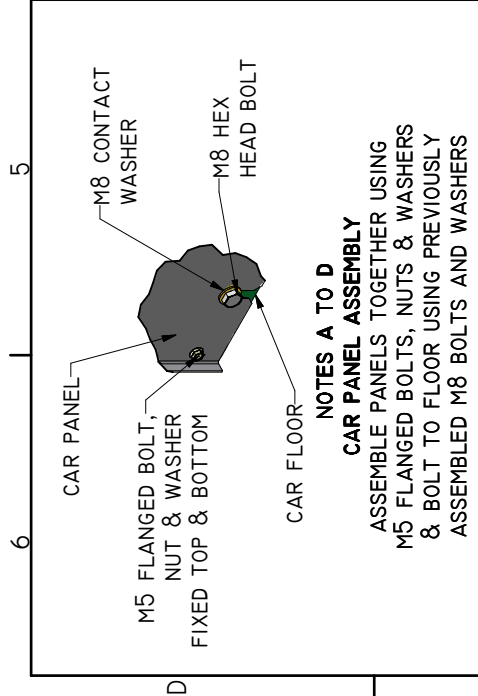
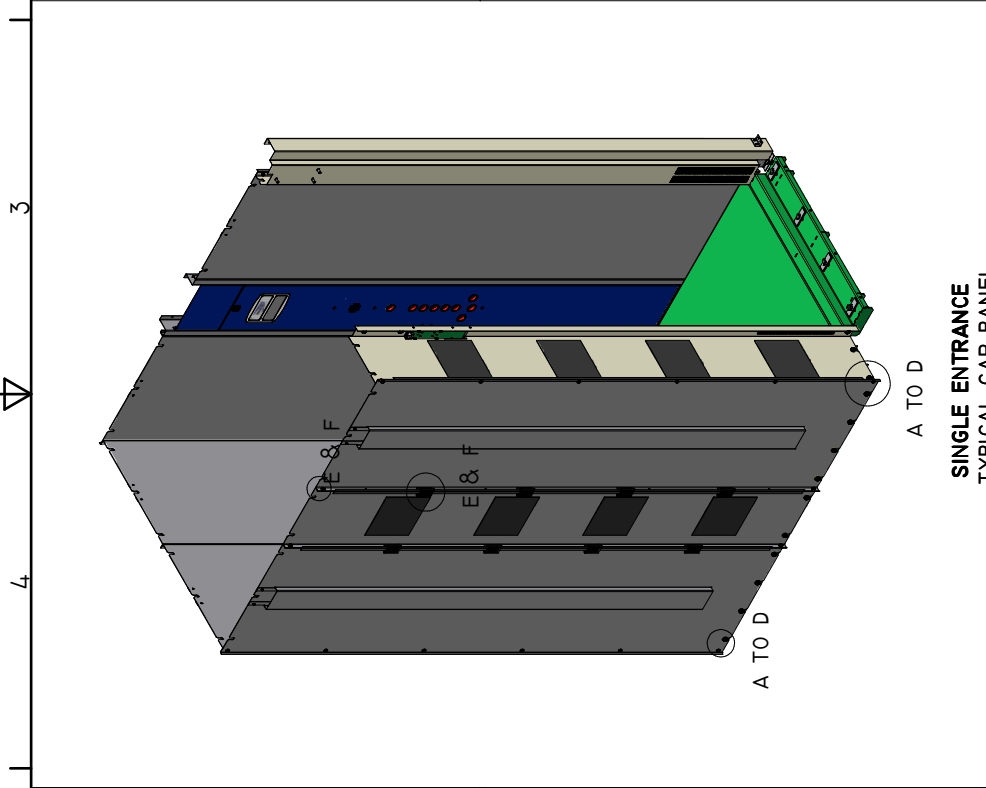
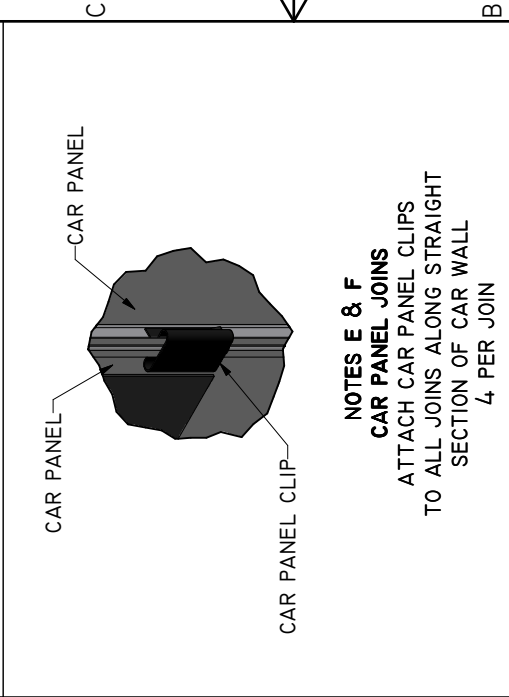
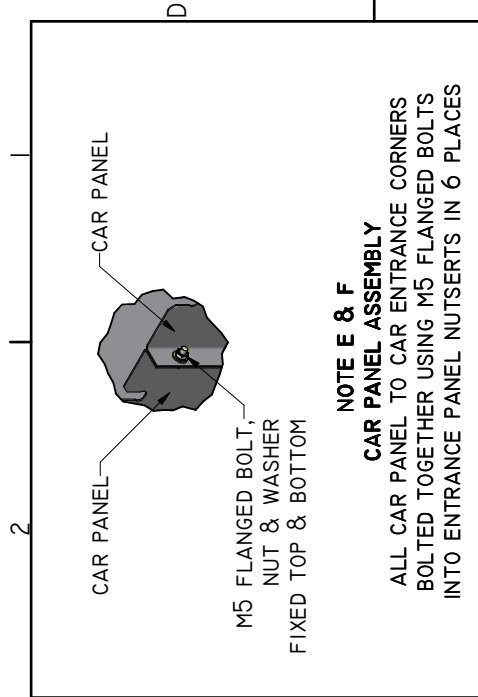
- A) Screw loosely into the **Floor** vertical edge faces the **M8 Bolt and Washer fixings** in the required Car Panel positions. Ensure there is sufficient gap between the Washers and the Floor to fit in each Panel.

Panel Assembly

It is recommended that all bolts are fully tightened at the end of the car assembly process once all Panels and the Roof/Ceiling Assembly are in place.

- B) Starting with the corner **Car Panels**, Bolt the corner **Car Panels to Car Panels** and **Car Panels to Car Entrance Panels** together.
- C) For the **Car Panel to Car Panel** corner assemblies use **M5 Flange Head Bolts, Washer and Nut fixings** in 6 positions. For the **Car Panel to Car Entrance Panel** assemblies use **M5 Flange Head Bolts** only in 6 positions. All **Entrance Panels** have nutsert fixings therefore nuts and washers are not required.
- D) Once assembled, place corner Car Panel assemblies in position and bolt to the car floor using previously assembled M8 fixings.
- E) Bolt the remaining panels into position using the M8 floor bolts, four **Car Panel Clips** equi-spaced per join and **M5 Flange Head Bolts, Washer and Nut fixings** at the top and bottom.
- F) The **COP** is bolted to the Floor and its supporting panels in exactly the same way as described above in E).
- G) Bolt the **Roof/Ceiling Assembly** in position followed by the **Entrance Header Panel** (See Roof Assembly Guide for further details).
- H) Then tighten up all Bolt Fixings around the floor, panels and roof of the car.
- I) Note: Adjacent Entrance Panels do not have nutsert fixings in them, but clearance holes for the **M5 Flange Head Bolts** to attach to the other entrance and wall panels.

THE ABOVE DESCRIBES THE ASSEMBLY OF A SINGLE ENTRANCE CAR, THE PRINCIPLE OF ASSEMBLY IS THE SAME FOR THROUGH AND ADJACENT ENTRANCES ALSO.



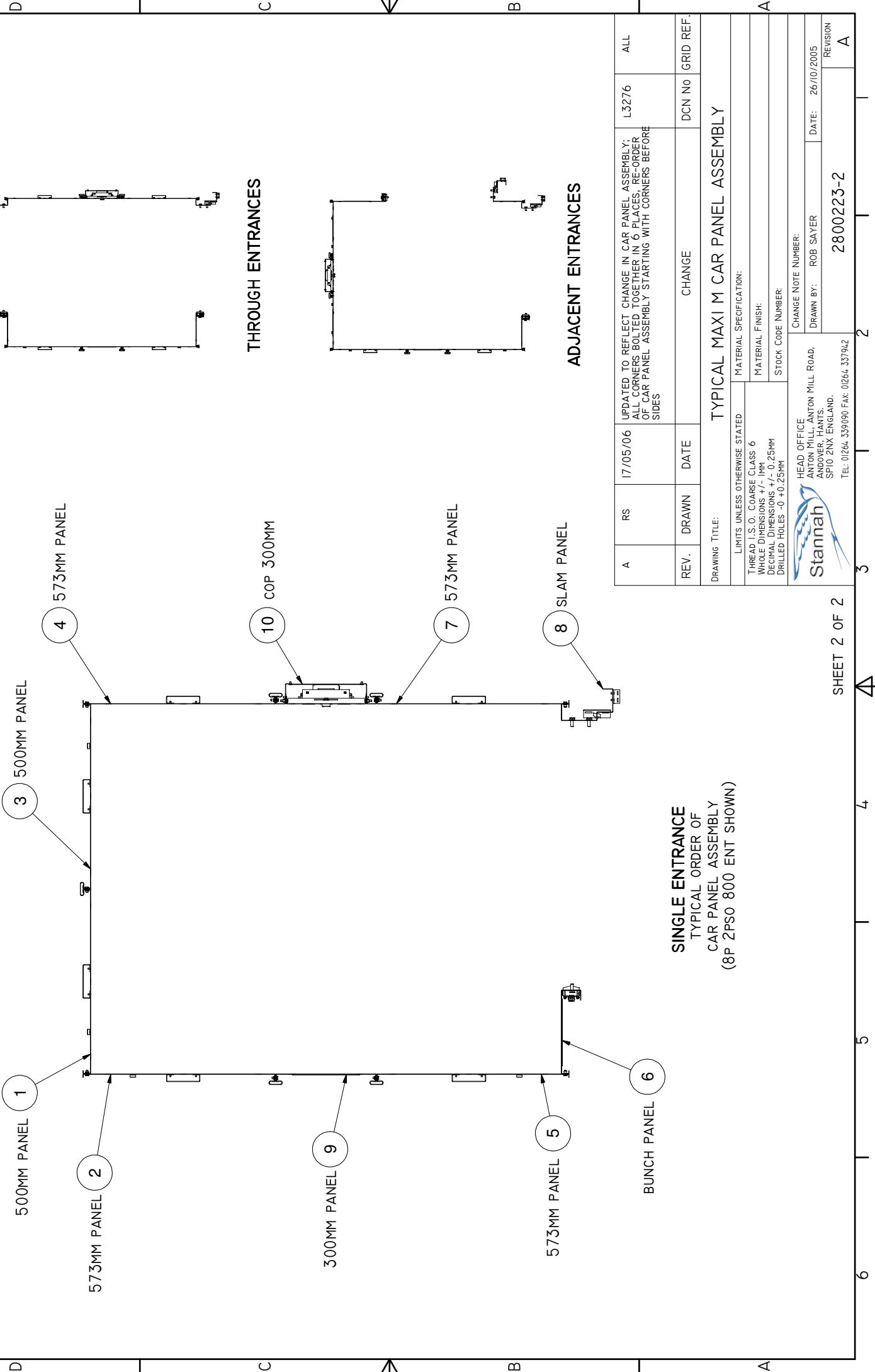
A	RS	17/05/06	DATE	CHANGE	DCN No	GRID REF.
REV.	DRAWN	DATE	CHANGE	DCN No	GRID REF.	

DRAWING TITLE:		TYPICAL MAXI M CAR PANEL ASSEMBLY				
LIMITS UNLESS OTHERWISE STATED		MATERIAL SPECIFICATION:				
THREAD U.S.O. COARSE CLASS 6		MATERIAL FINISH:				
WHOLE DIMENSIONS +/- 1MM		STOCK CODE NUMBER:				
DECIMAL DIMENSIONS +/- 0.25MM		CHANGE NOTE NUMBER:				
DRILLED HOLES -0 +0.25MM		DRAWN BY: ROB SAYER				
		DATE: 26/10/2005				

HEAD OFFICE
ANTON MILL, ANTON MILL ROAD,
ANDOVER, HANTS.
SP10 2NX ENGLAND.
TEL: 01264 339090 FAX: 01264 337942

2800223-2

REVISION
A



THROUGH ENTRANCES

ADJACENT ENTRANCES

SINGLE ENTRANCE
 TYPICAL ORDER OF
 CAR PANEL ASSEMBLY
 (8P 2PSO 800 ENT SHOWN)

A	RS	17/05/06	UPDATED TO REFLECT CHANGE IN CAR PANEL ASSEMBLY; ALL CORNERS BOLTED TOGETHER IN 6 PLACES. RE-ORDER OF CAR PANEL ASSEMBLY STARTING WITH CORNERS BEFORE SIDES	L3276	ALL
REV.	DRAWN	DATE	CHANGE	DCN No	GRID REF.
DRAWING TITLE: TYPICAL MAXI M CAR PANEL ASSEMBLY					
LIMITS UNLESS OTHERWISE STATED			MATERIAL SPECIFICATION:		
THREAD U.S.O. COARSE CLASS 6			MATERIAL FINISH:		
WHOLE DIMENSIONS +/- 1MM			STOCK CODE NUMBER:		
DECIMAL DIMENSIONS +/- 0.25MM			CHANGE NOTE NUMBER:		
DRILLED HOLES -0 +0.25MM			DRAWN BY: ROB SAYER		
HEAD OFFICE			DATE: 26/10/2005		
ANTON MILL, ANTON MILL ROAD,			REVISION		
ANDOVER, HANTS.			2800223-2		
SP10 ZINX ENGLAND.			A		
TEL: 01264 339090 FAX: 01264 337942					



SYSTEM 21 PASSENGER LIFTS

ROOF ASSEMBLY GUIDE

MAXILIFT M

2800220-2

Refer to Maxi M Roof Assembly Drawing 2800224-2

- A) The **Roof and Ceiling Assembly** is supplied assembled ready to install. It requires a minimum of two persons to lift it.
- B) Screw loosely into the Roof-edge vertical faces, **M8 Bolt and Washer Fixings** in the required **Car Panel** positions ensuring there is sufficient gap between the Washers and the Roof to slide down on to the Car Panels.
- C) It is recommended that once the **Sling and Car Floor Assembly** has been completed; the **Roof and Ceiling Assembly** is moved up to a higher landing so that once the Car Panels have been assembled, the Roof and Ceiling Assembly can be lowered into position. We recommend using a block and tackle arrangement attached to the **Lifting Beam** to do this.
- D) Upon completion of the Car Panel Assembly, the **Roof and Ceiling Assembly** can be lowered onto the Car Panels ensuring that the Car Panel slots slide in between the M8 Bolt and Washer fixings and the Roof-edge vertical face.

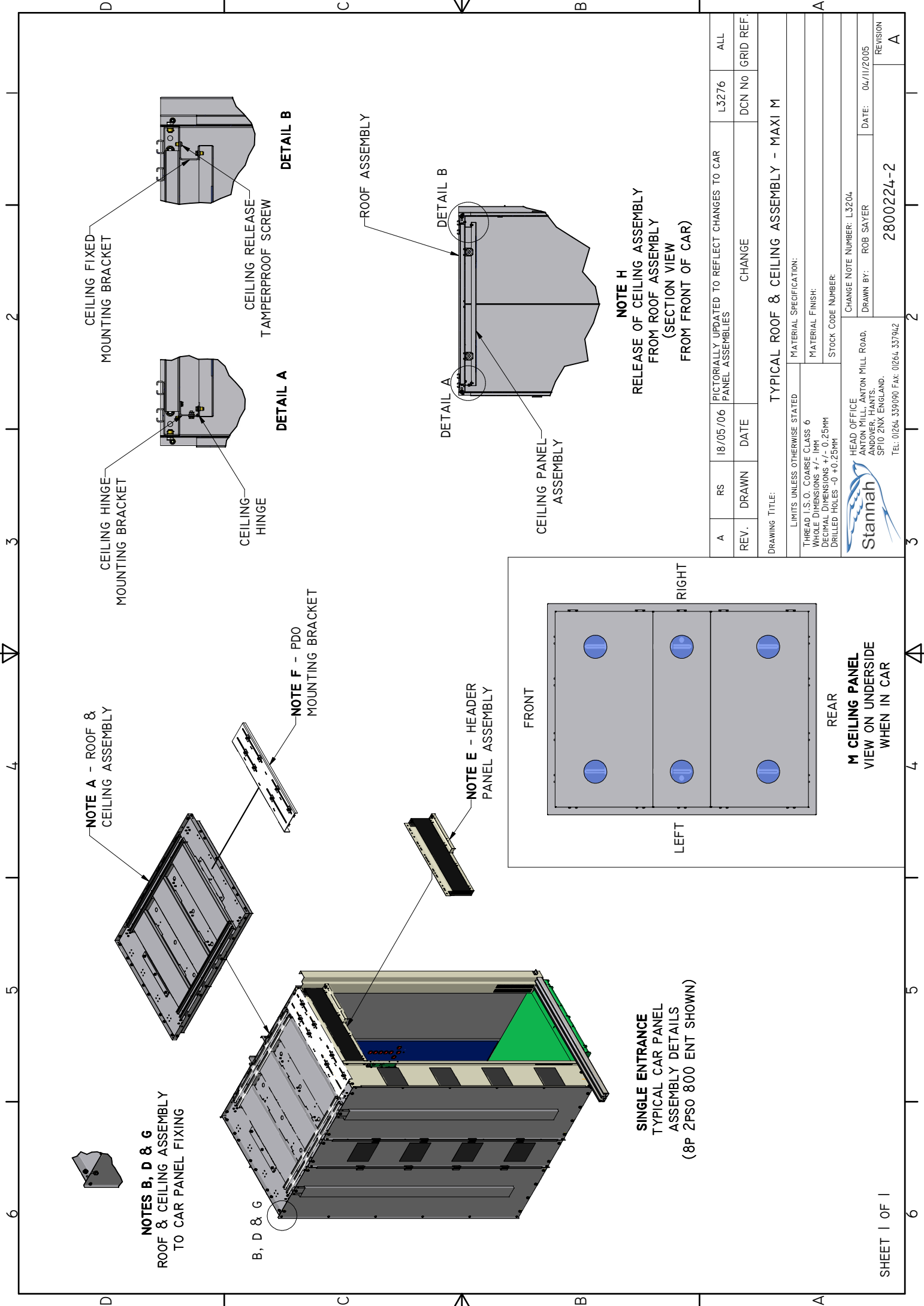
Note:- The Hinge Assembly end should be mounted to the left when viewed from the Front Entrance.

- E) Bolt the **Header Panel Assembly** to the Entrance Panels using **M8 Bolt and Washer Fixings**.
- F) Bolt the **PDO Mounting Bracket** to the Roof and Ceiling Assembly using the M8 Bolt and Washer Fixings in the required positions in the Roof-edge vertical faces.
- G) Tighten up all **Car Panel M8 Bolts** around the Roof Assembly, Header Panel Assembly and PDO Mounting Bracket. Remember to attach the remaining **Car Panel Clips** to the Panel joins.

NOTE

- H) **Light Bulbs** can be replaced by pivoting one or more of the three **Ceiling Panels** away from the **Roof Assembly**. To do this, unscrew the **M5 Tamperproof Screws** at the **Ceiling Fixed Mounting Brackets** using a **TX25 TORQ Screwdriver**. Each Light Bulb can then be accessed and replaced on the Roof Assembly. Once finished, return the Ceiling Panel(s) back to its original position and fasten in place.

THE ABOVE DESCRIBES THE ASSEMBLY OF A SINGLE ENTRANCE CAR, THE PRINCIPLE OF ASSEMBLY IS THE SAME FOR THROUGH AND ADJACENT ENTRANCES ALSO.



NOTE A - ROOF & CEILING ASSEMBLY

NOTES B, D & G
ROOF & CEILING ASSEMBLY
TO CAR PANEL FIXING

NOTE F - PDO
MOUNTING BRACKET

NOTE E - HEADER
PANEL ASSEMBLY

SINGLE ENTRANCE
TYPICAL CAR PANEL
ASSEMBLY DETAILS
(8P 2PSO 800 ENT SHOWN)

NOTE H
RELEASE OF CEILING ASSEMBLY
FROM ROOF ASSEMBLY
(SECTION VIEW
FROM FRONT OF CAR)

REAR
M CEILING PANEL
VIEW ON UNDERSIDE
WHEN IN CAR

REV.	DRAWN	DATE	PICTORIALLY UPDATED TO REFLECT CHANGES TO PANEL ASSEMBLIES	DCN No	GRID REF.
A	RS	18/05/06		L3276	ALL
DRAWING TITLE:			TYPICAL ROOF & CEILING ASSEMBLY - MAXI M		
LIMITS UNLESS OTHERWISE STATED			MATERIAL SPECIFICATION:		
THREAD I.S.O. COARSE CLASS 6			MATERIAL FINISH:		
WHOLE DIMENSIONS +/- 1MM			STOCK CODE NUMBER:		
DECIMAL DIMENSIONS +/- 0.25MM			CHANGE NOTE NUMBER: L3204		
DRILLED HOLES -0 +0.25MM			DRAWN BY: ROB SAYER		
			DATE: 04/11/2005		
			REVISION		
			2800224-2		
			A		

Stannah
HEAD OFFICE
ANTON MILL, ANTON MILL ROAD,
ANDOVER, HANTS.
SP10 2NX ENGLAND.
TEL: 01264 339090 FAX: 01264 337942



SYSTEM 21 PASSENGER LIFTS

**HANDRAIL ASSEMBLY
AND FIXING GUIDE**

MAXILIFT M

2800220-3

SYSTEM 21 PASSENGER LIFTS

HANDRAIL ASSEMBLY TO CAR PANEL

Refer to Maxi M Handrail Assembly and Fixing Drawing 2800225-2

Handrail Mounting for Wall 1 and Wall 2 Car Panels

- A) Adhere the **Handrail Mounting Plates** to the external side of the Car Panels. Ensure the M8 Nutsert holes of the Handrail Mounting Plates are fully visible through the Handrail mounting holes in the Car Panel.
- B) Screw the **15mm ‘Nuppsy’ Fixings** through the Car Panel into the Handrail Mounting Plates until tight. Then, unscrew the ‘Nuppsy’ fixing by 1½ rotations back from the Panel to leave a 2mm gap between the ‘Nuppsy’ body face and the Panel.
- C) Attach the **Left and Right Handrail Ends to the Handrail** ensuring that the End faces are flush with each other and orientated in the same direction.
- D) Loosen off the **M6 x 12LG ‘Grub’ Screw** in each Handrail End.
- E) Slide the **Handrail Assembly** onto the wall-mounted ‘Nuppsy’ Fixings and up to the Car Panel ensuring the ‘Grub’ Screw holes are located downwards underneath the Handrail Ends.
- F) Tighten the **‘Grub’ Screws** until the Handrail Assembly is locked in position.

Handrail Mounting for Wall 2 – ADJ/Wall 3 (COP Walls)

Follow A) and B) above for Handrail End mountings then;

- G) Locate the **M8 x 35LG SS Button Head Socket Screw** through the **Spigot** to protrude out of the ‘closed’ end. Using a socket screwdriver or Allen key, screw this assembly through the Car Panel into the Handrail Mounting Plate until tight ensuring the ‘Grub’ Screw holes are located downwards underneath the Spigot.
- H) Insert an **M8 Nutsert** into the Ø8.5 hole in the Handrail tubing and screw a **15mm ‘Nuppsy’ fixing** into this assembly. Then, unscrew the ‘Nuppsy’ fixing by 1½ rotations back from the Handrail to leave a 2mm gap between the ‘Nuppsy’ body face and the Handrail.
- I) Push a **Handrail End Cap** onto the end nearest the ‘Nuppsy’ Fixing assembled in H).
- J) Attach the **Left and Right Handrail Ends to each Handrail** ensuring that the End faces are flush with each other and orientated in the same direction as the ‘Nuppsy’ Fixings in the Handrails.
- K) Loosen off the **M6 x 12LG ‘Grub’ Screw** in each Handrail End and the **M5 x 6LG ‘Grub’ Screw** in each Spigot.
- L) Slide each **Handrail Assembly** onto the wall-mounted ‘Nuppsy’ Fixing and Spigot Assembly and up to the Car Panel. Ensure the ‘Grub’ Screw holes are located downwards underneath the Handrail End and Spigot.
- M) Tighten the **‘Grub’ Screws** in each position until the Handrail Assembly is secured in position.

HANDRAIL ASSEMBLY TO 'C' SECTION MIRROR SPACER

Refer to Maxi M Handrail Assembly and Fixing Drawing 2800225-2

Handrail Mounting for Wall 1 and Wall 2 Car Panels

- A) Adhere the **Handrail Mounting Plates** to the external side of the Car Panels. Ensure that the M8 Nutsert holes of the Handrail Mounting Plates are fully visible through the Handrail mounting holes in the Car Panel.
- B) Mount the **Mirror and 'C' Section Mirror Spacer Assembly** in accordance with the Mirror Assembly instructions.
- C) Screw the **25mm 'Nuppsy' Fixings** through the 'C' Section Mirror Spacer and the Car Panel mounting holes and into the Handrail Mounting Plates until tight. Then, unscrew the 'Nuppsy' fixing by 1½ rotations back from the Mirror Spacer to leave a 2mm gap between the 'Nuppsy' body face and the Mirror Spacer.
- D) Attach the **Left and Right Handrail Ends to the Handrail** ensuring that the End faces are flush with each other and orientated in the same direction.
- E) Loosen off the **M6 x 12LG 'Grub' Screw** in each Handrail End.
- F) Slide the **Handrail Assembly** onto the Mirror Spacer 'Nuppsy' Fixings and up to the Mirror Spacer ensuring the 'Grub' Screw holes are located downwards underneath the Handrail Ends.
- G) Tighten the **'Grub' Screws** until the Handrail Assembly is locked in position.

Handrail Mounting for Wall 2 – ADJ/Wall 3 (COP Walls)

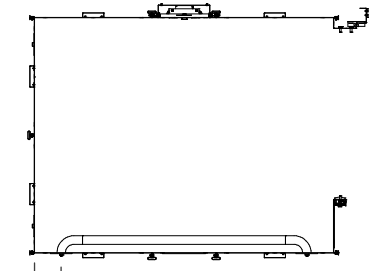
Follow A) and B) above for Handrail End mountings then;

- H) Locate the **M8 x 35LG SS Button Head Socket Screw** through the **Spigot** to protrude out of the 'closed' end. Using a socket screwdriver or Allen key, screw this assembly through the 'C' Section Mirror Spacer and Car Panel mounting holes and into the Handrail Mounting Plates until tight ensuring the 'Grub' Screw holes are located downwards underneath the Spigot.
- I) Insert an **M8 Nutsert** into the Ø8.5 hole in the Handrail tubing and screw a **15mm 'Nuppsy' fixing** into this assembly. Then, unscrew the 'Nuppsy' fixing by 1½ rotations back from the Handrail to leave a 2mm gap between the 'Nuppsy' body face and the Handrail.
- J) Push a **Handrail End Cap** onto the end nearest the 'Nuppsy' Fixing assembled in I).
- K) Attach the **Left and Right Handrail Ends to each Handrail** ensuring that the End faces are flush with each other and orientated in the same direction as the 'Nuppsy' Fixings in the Handrails.
- L) Loosen off the **M6 x 12LG 'Grub' Screw** in each Handrail End and the **M5 x 6LG 'Grub' Screw** in each Spigot.

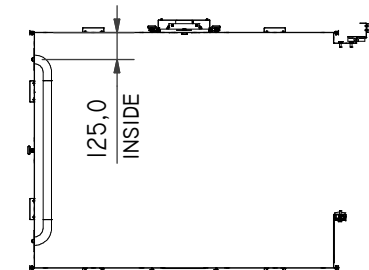
- M) Slide each **Handrail Assembly** onto the wall-mounted 'Nuppsy' Fixing and Spigot Assembly and up to the Mirror Spacer. Ensure the 'Grub' Screw holes are located downwards underneath the Handrail End and Spigot.
- N) Tighten the '**Grub**' **Screws** in each position until the Handrail Assembly is secured in position.

STANDARD HANDRAIL ASSEMBLY CONFIGURATIONS

125,0
INSIDE

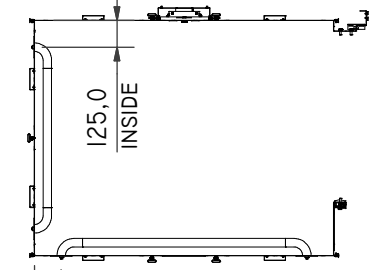


**STANDARD ENTRANCE
WALL 1 HANDRAIL
CONFIGURATION**



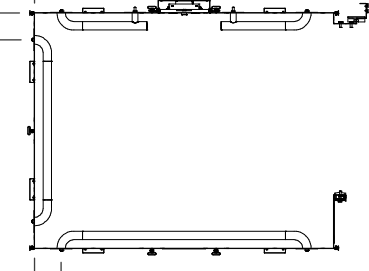
**STANDARD ENTRANCE
WALL 2 HANDRAIL
CONFIGURATION**

125,0
INSIDE



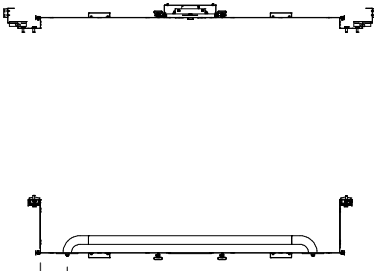
**STANDARD ENTRANCE
WALL 1 & 2 HANDRAIL
CONFIGURATION**

125,0
INSIDE



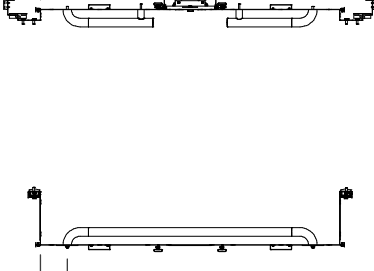
**STANDARD ENTRANCE
WALL 1, 2 & 3 HANDRAIL
CONFIGURATION**

125,0
INSIDE



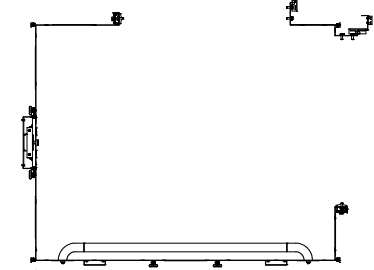
**THROUGH CAR
WALL 1 HANDRAIL
CONFIGURATION**

125,0
INSIDE



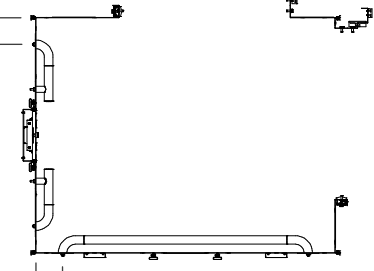
**THROUGH CAR
WALL 1 & WALL 3
HANDRAIL CONFIGURATION**

125,0
INSIDE




**ADJACENT ENTRANCE
WALL 1 HANDRAIL
CONFIGURATION**

125,0
INSIDE



**ADJACENT ENTRANCE
WALL 1 & WALL 2 ADJ
HANDRAIL CONFIGURATION**

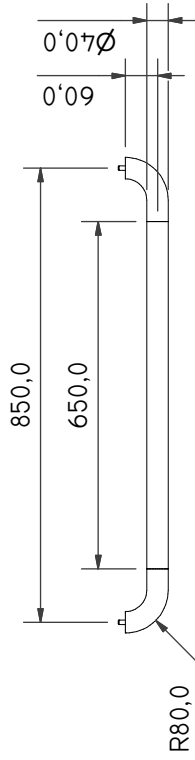
125,0
INSIDE

DRAWING TITLE: MAXI M HANDRAIL ASSY & FIXING DETAILS	
LIMITS UNLESS OTHERWISE STATED	MATERIAL SPECIFICATION:
THREAD I.S.O. COARSE CLASS 6	MATERIAL FINISH:
WHOLE DIMENSIONS +/- 1MM	STOCK CODE NUMBER:
DECIMAL DIMENSIONS +/- 0.25MM	CHANGE NOTE NUMBER: L3204
DRILLED HOLES -0 +0.25MM	DRAWN BY: ROB SAYER
HEAD OFFICE ANTON MILL, ANTON MILL ROAD, ANDOVER, HANTS. SP10 2NX ENGLAND. TEL: 01264 339090 FAX: 01264 337942	DATE: 10/10/2005
	REVISION 2800225-2 /

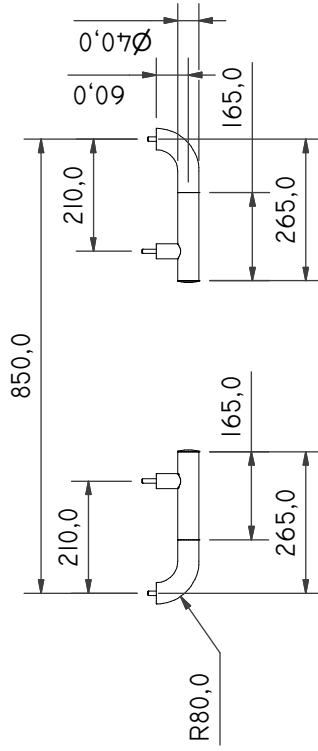
ALL DIMENSION SHOWN ARE FOR 8 PERSON LIFTS ONLY AS AN EXAMPLE



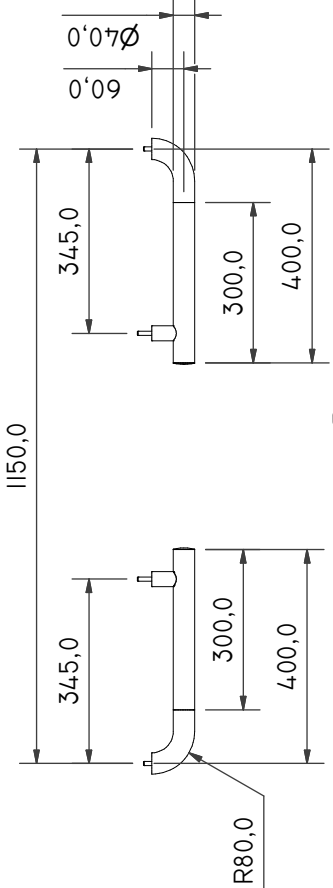
WALL 1



WALL 2



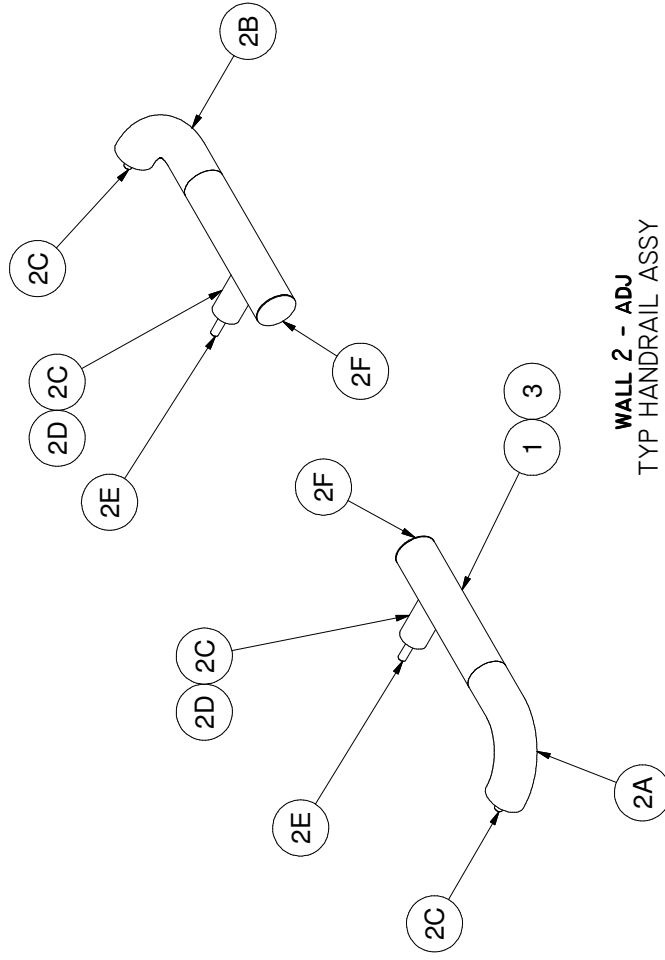
WALL 2 ADJ



WALL 3

PARTS LIST

ITEM	DRG NUMBER	DESCRIPTION	QTY
3	500064 - 2.0	NUTSERT M8	2
2F	504099	HANDRAIL END CAP BRUSHED SS	2
2E	501492	SCREW, M8 x 35LG SKT SS BUTTON HEAD	2
2D	504089	HANDRAIL SPIGOT BRUSHED SS (INCL M5X6 GRUB SCREW)	2
2C	504101	HANDRAIL NUPPSY M8 SS	4
2B	504093	HANDRAIL END RIGHT BRUSHED SS (INCL M6X12 GRUB SCREW)	1
2A	504091	HANDRAIL END LEFT BRUSHED SS (INCL M6X12 GRUB SCREW)	1
2	2800242-WALL2_ADJ	BRUSHED HANDRAIL END ASSYS - WALL2_ADJ	1
1	2800240	BRUSHED/PAINTED HANDRAIL TUBING	1



WALL 2 - ADJ
TYP HANDRAIL ASSY

DRAWING TITLE: **MAXI M HANDRAIL ASSY & FIXING DETAILS**

LIMITS UNLESS OTHERWISE STATED

THREAD I.S.O. COARSE CLASS 6
WHOLE DIMENSIONS +/- 1MM
DECIMAL DIMENSIONS +/- 0.25MM
DRILLED HOLES -0 +0.25MM

HEAD OFFICE
ANTON MILL, ANTON MILL ROAD,
ANDOVER, HANTS.
SP10 2NX ENGLAND.
TEL: 01264 339090 FAX: 01264 337942

CHANGE NOTE NUMBER: L3204

DRAWN BY: ROB SAYER

DATE: 10/10/2005

D

C

B

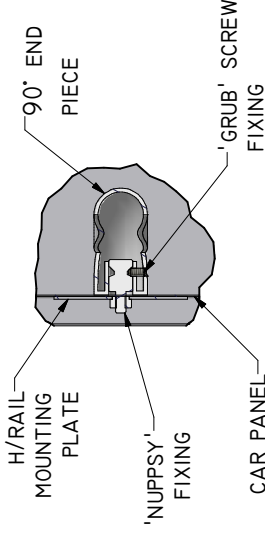
A

D

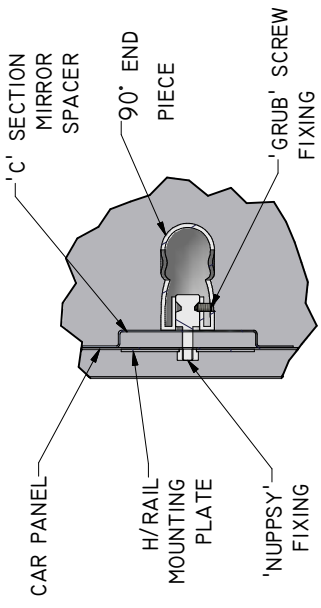
C

B

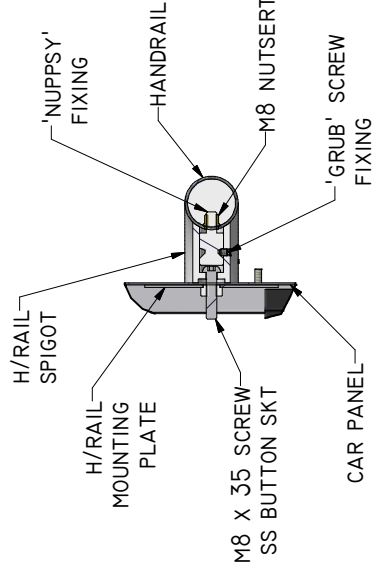
A



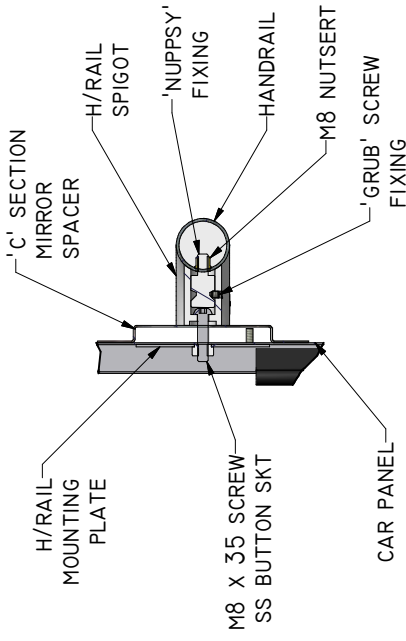
DETAIL A
TYPICAL WALL
MOUNTING OF
H/RAIL END



DETAIL B
TYPICAL 'C' SECTION MIRROR
SPACER MOUNTING OF
H/RAIL END



DETAIL C
TYPICAL WALL
MOUNTING OF
H/RAIL SPIGOT



DETAIL D
TYPICAL 'C' SECTION MIRROR
SPACER MOUNTING OF
H/RAIL SPIGOT

DRAWING TITLE: **MAXI M HANDRAIL ASSY & FIXING DETAILS**

LIMITS UNLESS OTHERWISE STATED	MATERIAL SPECIFICATION:
THREAD I.S.O. COARSE CLASS 6	MATERIAL FINISH:
WHOLE DIMENSIONS +/- 1MM	STOCK CODE NUMBER:
DECIMAL DIMENSIONS +/- 0.25MM	CHANGE NOTE NUMBER: L3204
DRILLED HOLES -0 +0.25MM	

HEAD OFFICE
ANTON MILL, ANTON MILL ROAD,
ANDOVER, HANTS.
SP10 2NX ENGLAND.
TEL: 01264 339090 FAX: 01264 337942

DRAWN BY: ROB SAYER
DATE: 10/10/2005
REVISION /





SYSTEM 21 PASSENGER LIFTS

MIRROR ASSEMBLY GUIDE

MAXILIFT M

2800220-4

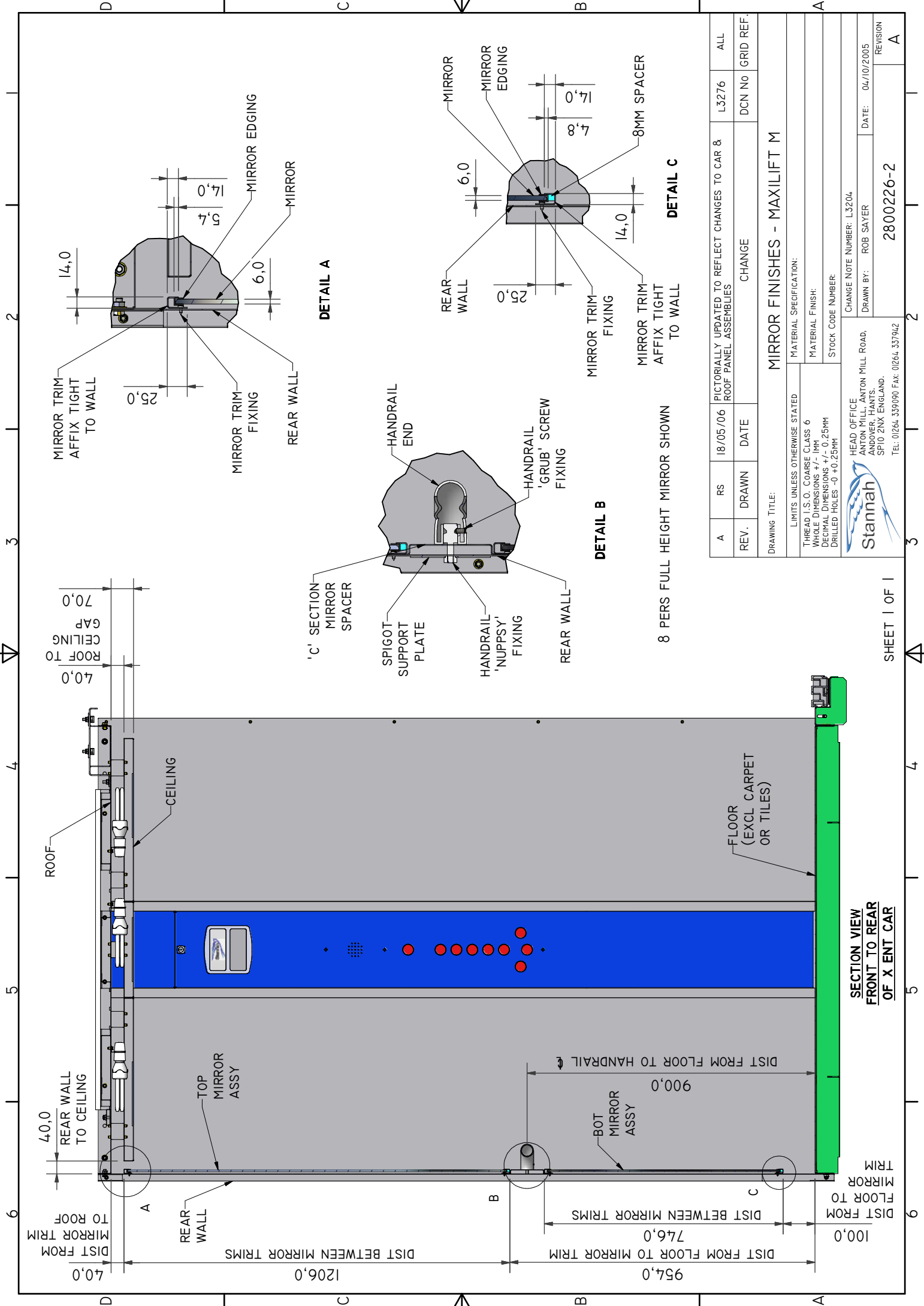
Refer to Maxi M Mirror Finishes Drawing 2800226-2

If ½ Height Mirror Fitted – Refer to Drawing 2800226-2 Top Mirror Assembly only

- A) Fit the lower **Mirror Trim** in the position shown using the self tapping screws in the holes provided.
- B) Fit the upper **Mirror Trim** in the position shown using the self tapping screws in the holes provided.
- C) Insert the **8mm Spacers** into the lower Mirror Trim.
- D) Fix strips of **Self-adhesive Foam** (supplied) to the Car Panels from top to bottom between the upper and lower Mirror Trims; to be located behind the Mirror when fitted.
- E) Lift the **Mirror** and locate it into the upper Mirror Trim and then gently lower it until the Mirror sits onto the 8mm Spacers in the lower Mirror Trim. The Mirror should back onto the self-adhesive foam behind.
- F) Ensure the **Mirror** and the **Mirror Edging** is flush with the **Mirror Trim** once fitted.

If Full Height Mirror Fitted – Refer to Drawing 2800226-2 Top & Bottom Mirror Assemblies

- A) Fit the '**C**' **Section Mirror Spacer** in position behind the Top Mirror Assembly's lower Mirror Trim and the Bottom Mirror Assembly's upper Mirror Trim using the self tapping screws in the holes provided.
- B) Fit the remaining **Mirror Trims** in positions shown using the self tapping screws in the holes provided.
- C) Insert the **8mm Spacers** into the lower Mirror Trims of the Top and Bottom Mirror Assemblies.
- D) Fix strips of **Self-adhesive Foam** (supplied) to the Car Panels from top to bottom between the upper and lower Mirror Trims of each assembly; to be located behind the Mirrors when fitted.
- E) Lift in each **Mirror** and locate it into the upper Mirror Trim and then gently lower it until the Mirror sits onto the 8mm Spacers in the lower Mirror Trim. The Mirrors should back onto the self-adhesive foam behind.
- F) Ensure each **Mirror** and **Mirror Edging** is flush with the **Mirror Trim** once fitted.



DETAIL A

DETAIL B

DETAIL C

8 PERS FULL HEIGHT MIRROR SHOWN

MIRROR FINISHES - MAXILIFT M

REV.	DRAWN	DATE	CHANGE	DCN No	GRID REF.
A	RS	18/05/06	PICTORIALLY UPDATED TO REFLECT CHANGES TO CAR & ROOF PANEL ASSEMBLIES	L3276	ALL

DRAWING TITLE:		MIRROR FINISHES - MAXILIFT M	
LIMITS UNLESS OTHERWISE STATED		MATERIAL SPECIFICATION:	
THREAD I.S.O. COARSE CLASS 6		MATERIAL FINISH:	
WHOLE DIMENSIONS +/- 1MM		STOCK CODE NUMBER:	
DECIMAL DIMENSIONS +/- 0.25MM		CHANGE NOTE NUMBER: L3204	
DRILLED HOLES +/- 0.25MM		DRAWN BY: ROB SAYER	
HEAD OF OFFICE		DATE: 04/10/2005	
ANTON HILL, ANTON MILL ROAD,		REVISION	
ANDOVER, HANTS.		2800226-2	
SPO 21X ENGLAND.		A	
TEL: 01264 339090 FAX: 01264 337942			



HEAD OF OFFICE
ANTON HILL, ANTON MILL ROAD,
ANDOVER, HANTS.
SPO 21X ENGLAND.
TEL: 01264 339090 FAX: 01264 337942

**SECTION VIEW
FRONT TO REAR
OF X ENT CAR**