

SYSTEM 21 - TYPICAL WORKING PLATFORM (DURING INSTALLATION OF GUIDES & HYDRAULIC RAM)

THIS WORKING PLATFORM IS FOR USE DURING INSTALLATION OF THE LIFT GUIDE RAILS AND HYDRAULIC RAM (WHERE IT IS NOT POSSIBLE TO FULLY BOARD) WORKING LEVELS
PRIOR TO THIS STAGE OF INSTALLATION WORKING LEVELS MUST BE FULLY BOARDED IN ACCORDANCE WITH DATA SHEET TD3005/TD3010.

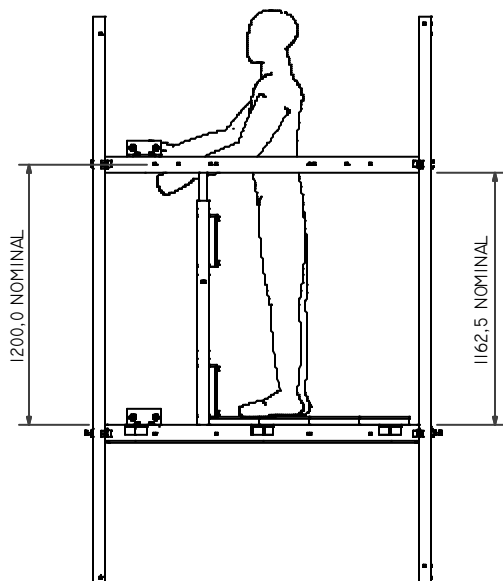
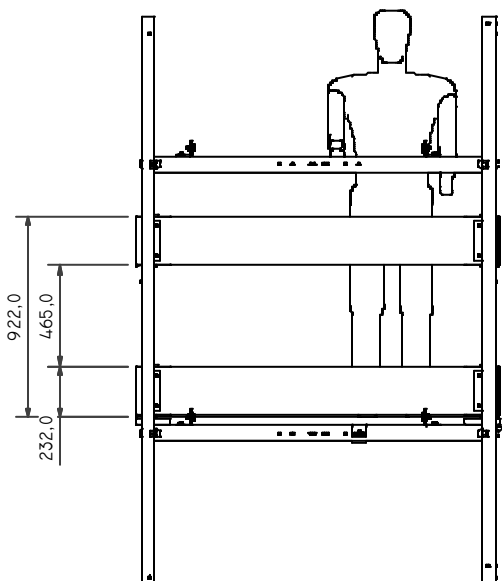
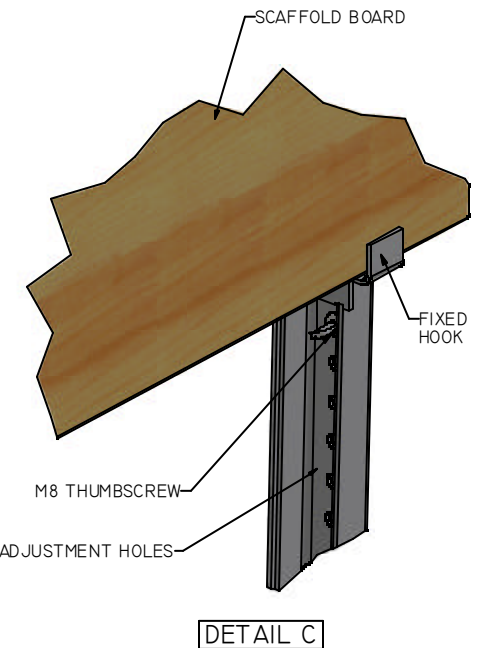
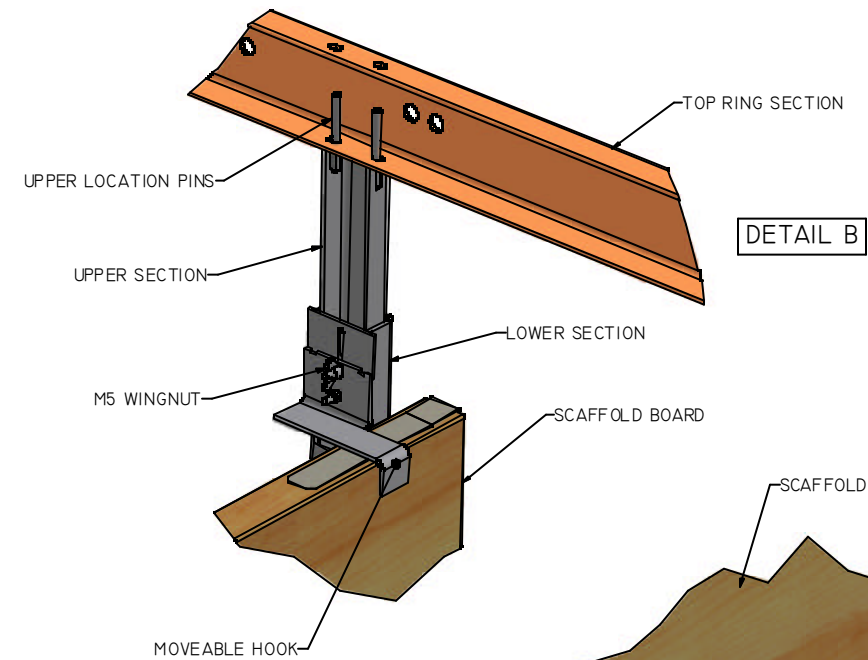
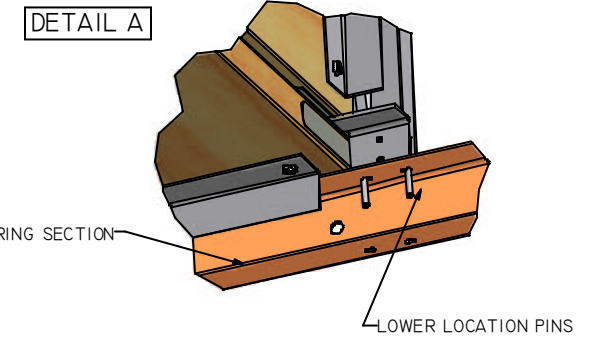
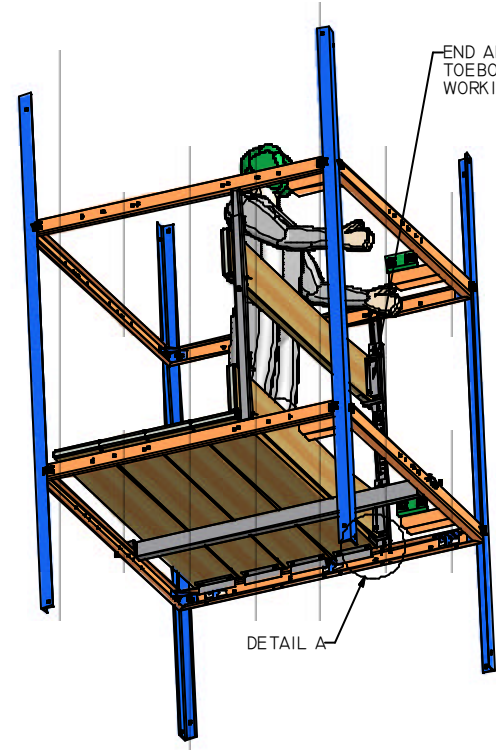
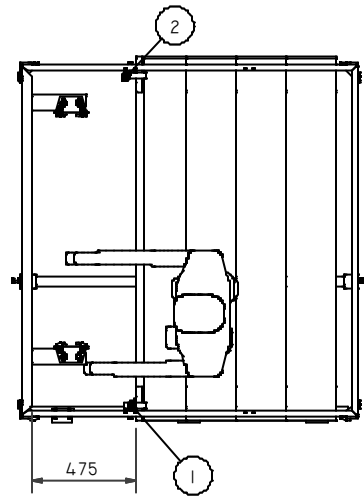
TO BE USED IN CONJUNCTION WITH TD3005 OR TD3010

SEQUENCE FOR INSTALLATION OF BOARD RETAINER ASSEMBLY

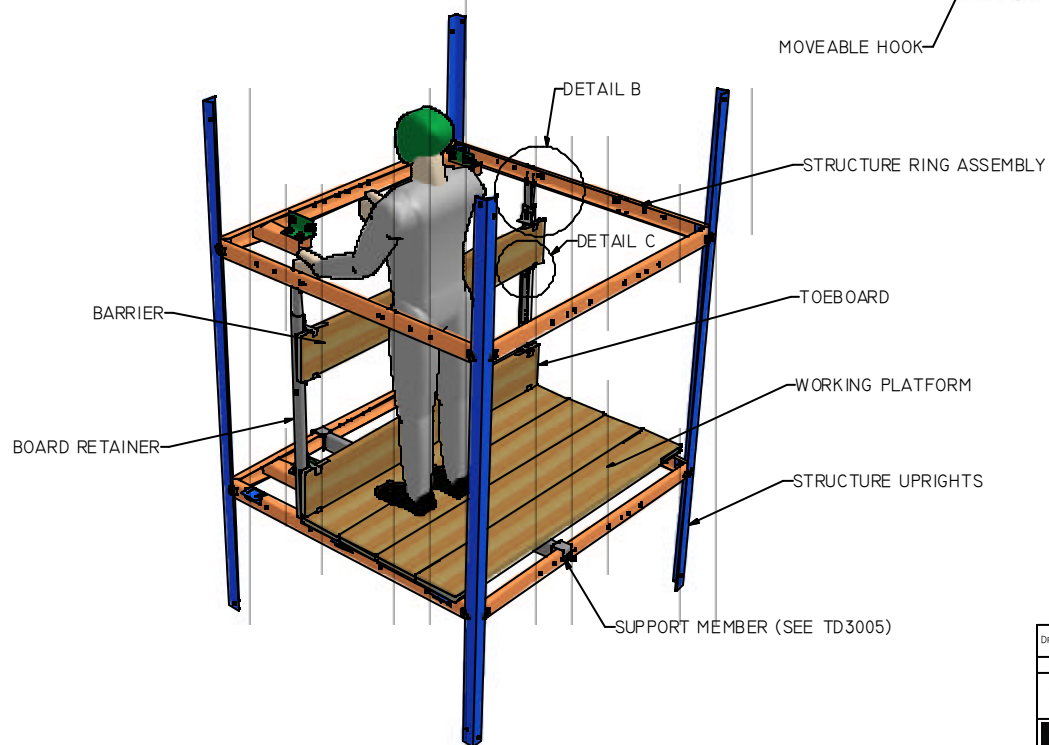
BEFORE INSTALLING THE BOARD RETAINERS, TOEBOARD & BARRIER THE WORKING LEVEL AND LEVEL BELOW SHOULD BE BOARDED OUT IN ACCORDANCE WITH DATA SHEET TD 3005 OR TD3010.

- INSERT THE TWO LOWER LOCATION PINS INTO THE SLOTS ON THE UPPER SURFACE OF THE 'WORKING PLATFORM' RING SECTION ASSEMBLY. SEE DETAIL A.
- REMOVE THE M8 THUMBSCREW, AND SLIDE THE UPPER SECTION UPWARDS UNTIL THE UPPER LOCATION PINS ARE ENGAGED IN THE SLOTS IN THE UNDERSIDE OF THE TOP RING ASSEMBLY. SECURE THE BOARD RETAINER BY RE-INSERTING THE M8 THUMBSCREW THROUGH THE NEAREST AVAILABLE ADJUSTMENT HOLE, TO ENSURE THAT ALL FOUR PINS REMAIN FULLY ENGAGED AT ALL TIMES. SEE DETAIL B AND DETAIL C.
- REPEAT STEPS A & B FOR THE SECOND BOARD RETAINER.
- RAISE BOTH MOVEABLE TOEBOARD HOOKS TO THE TOP OF THE ADJUSTMENT SLOT AND TEMPORARILY FASTEN THEM WITH THE M5 WINGNUTS. SEE DETAIL B.
- INSERT A SCAFFOLD BOARD INTO THE FIXED HOOKS AT THE BOTTOM OF EACH BOARD RETAINER, THEN LOWER THE TWO MOVEABLE HOOKS OVER THE TOP EDGE OF THE BOARD AND FASTEN IN POSITION USING THE M5 WINGNUTS. SEE DETAIL B AND DETAIL C.
 NOTE: THE TWO BOARDS REMOVED FOR INSTALLATION OF THE GUIDES & RAM CAN BE UTILISED FOR THE TOEBOARD & BARRIER. THEY MUST HAVE THE STEEL RETAINING ANGLES FITTED AT EACH END.
- REPEAT STEP E FOR THE BARRIER BOARD (LOCATED ON THE UPPER GROUP OF HOOKS).

THE BARRIER IS INTENDED TO PROVIDE EDGE PROTECTION TO THE VOID. UNDER NO CIRCUMSTANCES SHOULD PERSONS CLIMB ON TO OR OVER THE TOEBOARD OR BARRIER BOARD.



THE LEVEL BELOW THE WORKING PLATFORM SHOULD BE AS FULLY BOARDED AS POSSIBLE. THE VERTICAL DISTANCE FROM THE WORKING LEVEL MUST NOT EXCEED 2 METRES.



PARTS LIST			
ITEM	PART NUMBER	DESCRIPTION	QTY
1	2000517-1	TOEBOARD/BARRIER RETAINER ASSY (AS DWN)	1
2	2000517-2	TOEBOARD/BARRIER RETAINER ASSY (OPP HND)	1

DRAWING TITLE: TYPICAL WORKING PLATFORM WITH EDGE PROTECTION	
LIMITS UNLESS OTHERWISE STATED	MATERIAL SPECIFICATION:
THREAD I.S.O., COARSE CLASS 6	MATERIAL FINISH:
WHOLE DIMENSIONS +/- 1MM	STOCK CODE NUMBER:
DECIMAL DIMENSIONS +/- 0.25MM	
DRILLED HOLES +/- 0.23MM	
HEAD OFFICE: ANTON MILL, ANTON MILL ROAD, ANDOVER, HANTS, SP10 2NX, ENGLAND. TEL: 01264 339090 FAX: 01264 337942	CHANGE NOTE NUMBER: L5073
	DRAWN BY: RICHARD C. DATE: 17/06/2005
	REVISION
	TD3011