

MOTOR TYPE		POWER [kW/HP]		FLOW [l/min]		OPERATING PRESSURE [bar]		MAX CAR SPEED [m/s]	oil volume [litre]			dry weight [ks]
		min	max	min	max	min	max		min	useful	max	
4 poles single phase	50 Hz	1,5 / 2	2,2 / 3	13	21	5	45	0,20	60	70	130	100
	60 Hz	1,8 / 2,5	2,6 / 3,5	16	32							
2 poles three phases	50 Hz	2,2 / 3	7,7 / 10,5	25	75	5	45	0,20	60	70	130	100
	60 Hz		8,0 / 5,8	30	52							

(1) components on request

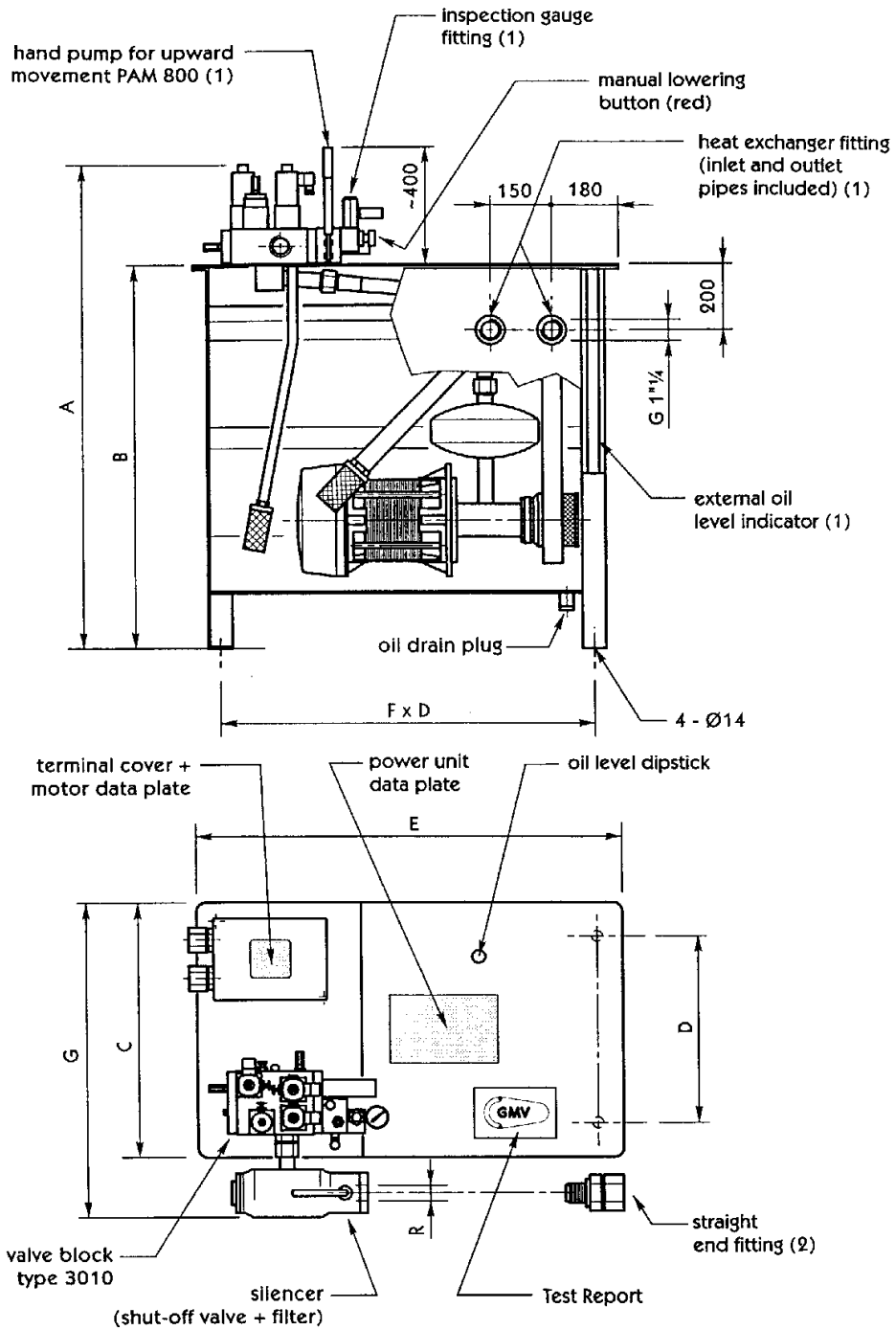
(2) standard for pump flow up to 37 l/min

(3) standard for pump flow over 37 l/min

POWER UNIT TYPE "ZERO"
(valve type "5000" - single speed)

data sheet : 04.004 - 1/1
date : 25.08.1998

GMV



type	valve block size	pump flow [l/min]		A	B	C	D	E	F	G	R	dry weight [kg]	capacity [litri]		
		min	max										min	useful	total
T1	1 1/4	25	150	1090	830	560	410	810	710	735	G 1 1/4	170	65	115	180
T2	1 1/4	52	216					910	810		G 1 1/4	180	75	145	220
T3	1 1/2	180	432	1240	980	685	535	1060	960	860	G 1 1/2	270	130	310	440
T4	2"	432	600	1390	1120	750	600	1310	1210	925	G 2"	360	220	480	700

(1) components on request.

(2) straight end fitting only for R = 1 1/4 and R = 1 1/2. For R = 2" a plastic cap is supplied.

For different specification than the ones shown in this data sheet please consult GMV