

**LIBRETTO ISTRUZIONI**  
**INSTRUCTION MANUAL**

**Dispositivo di blocco  
per porte automatiche**

**Landing door locking device**

**Modello 83**

**F06AA01**



Via Di Vittorio, 21  
20060 Vignate – Milano Italy  
Tel 0295127.1 – Fax 029560423

**IGV**

<http://www.igv1.com>

e-mail: [info@igv1.com](mailto:info@igv1.com)



## LANDING DOOR LOCKING DEVICE

Model 83

**INSTRUCTION MANUAL - F06AA01-B**  
 CHARACTERISTICS, INSTALLATION, TESTS, USE,  
 MAINTENANCE, SAFETY

Dossier: 06

Section: AA

Part: 01

Revision: 0

Page: 5 / 10

Date: 11.02.1999

TABLE OF CONTENTS

1. DATA OF THE EC TYPE EXAMINATION CERTIFICATE OF THE COMPONENT and CONFORMITY TO THE DIRECTIVE
2. RANGE OF USE OF THE COMPONENT and RELATED ELEMENTS
3. PRELIMINARY INFORMATION
4. ASSEMBLY / SETTING INSTRUCTIONS
5. FINAL TESTS AND CHECKS
6. MAINTENANCE INSTRUCTIONS
7. SAFETY - RESPONSIBILITY - WARRANTY

**Foreword**

*Carefully read this manual before the installation and/or maintenance of the component.*

*It is important that the owner of the installation ensures that programmed maintenance is carried out on the lift in which the component is installed.*

*It is also important that the owner of the installation ensures that no incorrect use of the lift is made. The lift must not be overloaded and access to the lift machine room must be forbidden to unauthorised persons.*

With reference to the regulations in force at the European Community level, the Model 83 landing door locking device product is to be considered as a safety component and is, therefore, supplied accompanied by a manufacturer's EC declaration of conformity, wherein the manufacturer declares the conformity to the European Directives applicable to the component.

**1. DATA OF THE EC TYPE EXAMINATION CERTIFICATE OF THE COMPONENT and CONFORMITY TO THE DIRECTIVE**
*Product:*

**Landing door locking device Model 83 manufactured by IGV S.p.A.**

*Rated current:*            2 A ac ;     1 A dc

*Rated voltage:*         220 V ac ;   180 V dc

*Door type:*                horizontally sliding

*Protection grade:*        IP 20

*Skin current resistance:*   TK 175V

*Terminal type:*            under head screw

Since IGV S.p.A. has:

- submitted a model of the component for EC type examination according to the Annex V of the Directive 95/16/EC;
- obtained the EC Type Examination Certificate No. I 0157 from IMQ (Via Quintiliano 43, 20138 MILANO - I), issued on 03.06.1998;
- has submitted the manufacture of the component to the check of the notified body IMQ (identification number 0051) according to Annex XI of the Directive 95/16/EC; the product conforms to the essential health and safety requirements provided for by the Directive 95/16/EC and therefore IGV S.p.A.:
- has affixed the CE marking on the component
- has drawn up the EC Declaration of Conformity, which accompanies the product
- will keep a copy of the Declaration of Conformity for ten years starting from the date of manufacture of the component.



## LANDING DOOR LOCKING DEVICE

Model 83

### INSTRUCTION MANUAL - F06AA01-B CHARACTERISTICS, INSTALLATION, TESTS, USE, MAINTENANCE, SAFETY

Dossier: 06  
Section: AA  
Part: 01  
Revision: 0  
Page: 6 / 10  
Date: 11.02.1999

## 2. RANGE OF USE OF THE COMPONENT and RELATED ELEMENTS

The landing door locking device Model 83 must be used only in combination with landing doors having the following characteristics:

TYPE	OPENING (mm)	HEIGHT MAX. (mm)
1 panel	500 ÷ 800	3220
2 panels - central opening	500 ÷ 1400	3220
2 panels - side opening	500 ÷ 1400	3220
4 panels - central/side opening	600 ÷ 2500	3220
3 panels - side opening	600 ÷ 1400	3220

## 3. PRELIMINARY INFORMATION

The landing door locking device Model 83 is supplied already assembled on the drive mechanisms for horizontally sliding landing doors of the type and dimensions indicated in Section 2.

As a consequence, the assembly instruction can only report what has already been carried out in the factory during the assembly of the product.

If the landing door unit is supplied by IGV S.p.A., make also reference to the instructions accompanying the product.

In the case of replacement of the landing door locking device, in whole or in part, on an existing landing door mechanism, the component must be assembled in exactly the same way as the original one. Therefore, the checks described in the section "FINAL TESTS AND CHECKS" must be carried out.

## 4. ASSEMBLY / SETTING INSTRUCTIONS

It is recalled that all assembly operations must be carried out by authorised personnel and that tools and means of protection must be used in accordance with the applicable regulations concerning health and safety of people.

The landing door locking device is supplied already installed on the landing door mechanism.

The only possible settings relate to (refer also to Fig. 1 and Fig. 2):

- the coupling roller (ref. 1) in the opening/closing direction of the panels and perpendicularly to the hook (ref.2) support. This setting must ensure an adequate coupling with the car door operator cam, when the latter has been installed. In particular, the operator must be centred in such a way that the coupling cams result perfectly aligned with the rollers mounted on the locking elements.
- The bridge support of the door contact (ref. 3), which can be adjusted in the direction perpendicular to the hook support. This setting must ensure an adequate insertion of the pins (ref. 4) forming the bridge across the contact to indicate the closing of the landing doors.

All other settings and operation tests of the component have already been carried out in the factory.



**LANDING DOOR LOCKING DEVICE  
Model 83**

**INSTRUCTION MANUAL - F06AA01-B  
CHARACTERISTICS, INSTALLATION, TESTS, USE,  
MAINTENANCE, SAFETY**

Dossier: 06  
Section: AA  
Part: 01  
Revision: 0  
Page: 7 / 10  
Date: 11.02.1999

In the case the panels of the landing doors are not supplied by IGV S.p.A., it is necessary to fit the emergency device onto the panels, where the unlocking triangle key must be inserted. The dimensions of the keyhole and the triangle key must comply exactly with the provisions of Annex B of the EN81:1998 (parts 1 and 2). It is recommended to install emergency devices supplied by IGV and to connect them to the locking device so as to ensure and check the operation of the device as described in the next section.

In any case, the final tests and checks must be carried out after the completion of the lift assembly.

### **5. FINAL TESTS AND CHECKS**

After the completion of the assembly operations, the correct operation of each landing door locking device must be checked in combination with the operation of the landing and car doors.

In any case, check the engagement and the disengagement of the hook relative to its seat, making sure that there is absolutely no friction with respect to the neighbouring elements. Furthermore, check visually that the door contact bridge engages adequately the door contact, as an indication of the actual closing of the landing doors and to allow the car travel.

All checks must also be made relative to the locking operation and the closing of the landing door assembly. In particular,:

- check that the height of the door unlocking zone, both below and above the floor level, is less than the values provided for by the EN81 harmonised standards;
- check that under normal operation it is not possible to operate the lift or to maintain it in operating condition if a landing door (or any of its panels) is open. However, with the doors open, the following operations are allowed under certain conditions specified by the EN81 harmonised standards: the preliminary operations for the movement of the car, the levelling or re-levelling, the docking operation (for the auxiliary stop of the car above the floor level if provided);
- possibly check that a force of 300 N along the opening direction of the door does not decrease the effectiveness of the locking operation (this check has already been made on the prototypes in the factory).

*Furthermore check the unlocking and consequent opening of the landing doors by using the emergency triangle key. After the door opening, the locking device must not remain in the unlocking position when the landing door is closed, in the absence of an unlocking action.*

*Attention! The emergency unlocking key must be given to a responsible person together with the related written instructions, which must specify the precautions to be adopted to avoid the risk of accidents that could result from the unlocking of the locking device not followed by a re-locking.*

### **6. MAINTENANCE INSTRUCTIONS**

It is essential that the lift and the related components installed are maintained in good operating condition according to the instructions supplied by the installer.

For this purpose, regular programmed maintenance must be carried out. In fact, the safety of a lift depends also on its maintenance in order to avoid risks for the operation of the lift components and the safety of the users (or maintenance technicians).

The maintenance operations required for the lift and its components must be carried out in safe conditions by competent personnel and in accordance with the related instructions.

The main checks to be made during a maintenance call are the following.

- Check the operation of the locking device by carrying out the checks described in Section 5.
- Check that the unlocking operation carried out by means of the emergency key is correct.
- Check the correct operation of the electrical contact monitoring the closing of the landing door. As for all safety contacts, it is also necessary to check that a contact to ground or to earth in the safety circuit causes the lift to stop.



**LANDING DOOR LOCKING DEVICE  
Model 83**

**INSTRUCTION MANUAL - F06AA01-B  
CHARACTERISTICS, INSTALLATION, TESTS, USE,  
MAINTENANCE, SAFETY**

Dossier: 06  
Section: AA  
Part: 01  
Revision: 0  
Page: 8 / 10  
Date: 11.02.1999

### 7. SAFETY - RESPONSIBILITY - WARRANTY

IGV S.p.A. declines any and all responsibility in connection with:

- the use of the landing door locking device in lifts having characteristics other than those indicated in the section "RANGE OF USE OF THE COMPONENT and RELATED ELEMENTS";
- the use of the landing door locking device in lift systems other than those governed by EN81.1 and EN81.2 harmonised standards;
- assembly and maintenance operations not complying with the provided instructions and good workmanship;
- the disassembly of or the tampering with the landing door locking device or any of its components.

In general, IGV S.p.A. shall not be responsible for damages deriving from operation faults caused by the failure to comply with the provisions of this manual.

During the assembly, inspection and maintenance operations, all necessary measures must be taken, which are necessary to ensure safety for the persons dealing with the above operations, in accordance with the applicable national laws and regulations concerning the prevention of work accidents and the health and safety of people on the work sites.

As already indicated in this manual, the assembly and maintenance operations must be carried out only by competent persons, who have read and understood the contents of this manual.

The after sales service of IGV S.p.A. is available for any information and explanation.

*The product is supplied under the warranty conditions applicable at the time of purchase. There are no user serviceable parts in this product. Any attempt to modify, disassemble or tamper with the product will make the warranty void.*

*IGV S.p.A. declines any and all responsibility, including responsibility towards third parties, for any and all harmful events or outcomes caused by the product or its use if said events or outcomes are the consequence of works or modifications not made by IGV S.p.A., the failure to comply with the instructions contained in this manual, any use of the product not complying with the product specifications or for purposes other than those for which the product was designed, any tampering with the product, no matter who carried it out, or any action or fact not attributable to IGV S.p.A.*

*The contents of this manual are deemed to be correct at the time of printing. Under its continuing product improvement policy, however, IGV S.p.A. reserves the right to modify without notice the product specifications and features and accordingly amend the contents of this manual.*



modello 83  
**DISPOSITIVO DI BLOCCO PER PORTE AUTOMATICHE**  
**LANDING DOOR LOCKING DEVICE**

Fascicolo: 06  
Sezione: AA  
Parte: 01  
Revisione: 0  
Pagina: 9 / 10  
Data: 11.02.1999

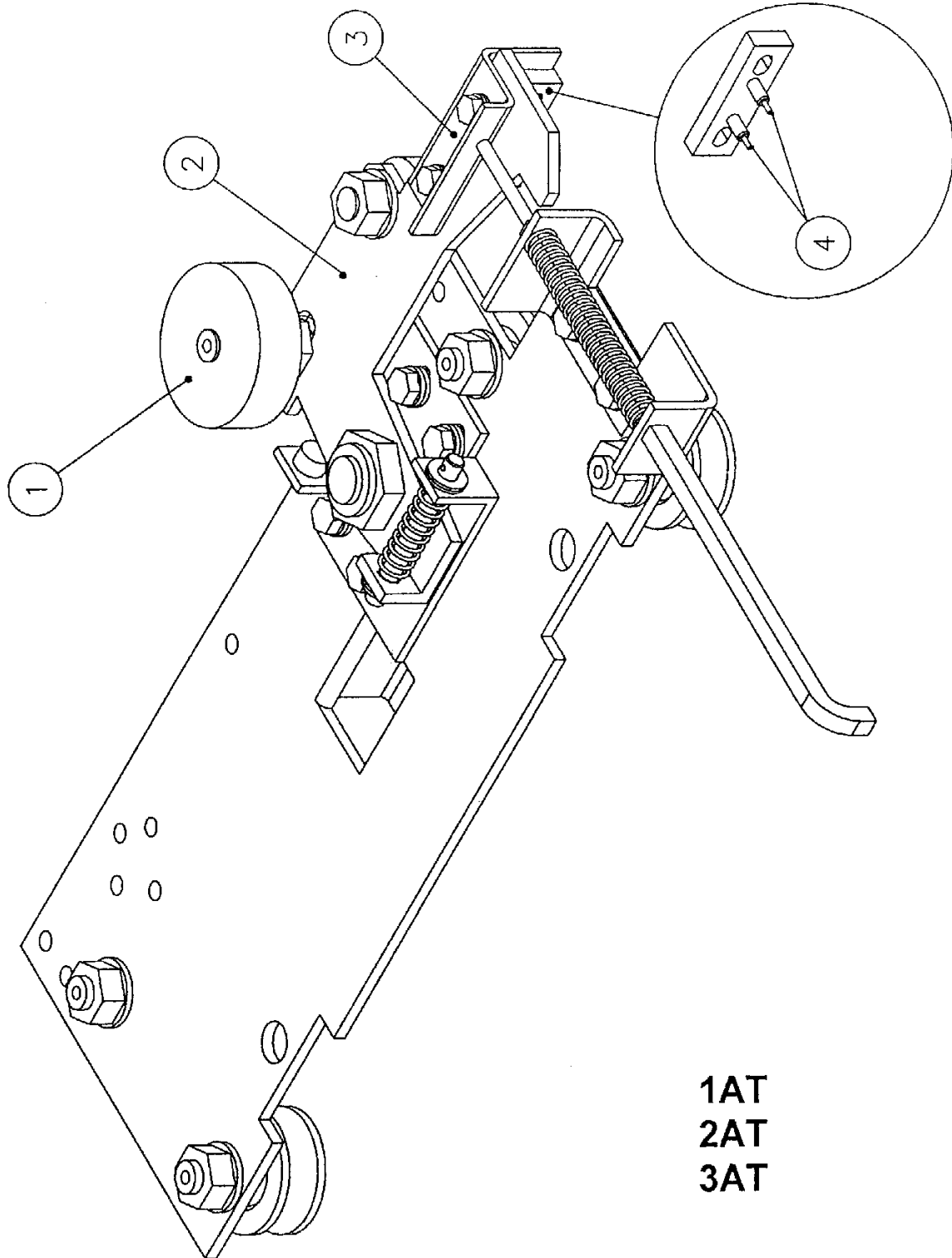


Fig.1



modello 83  
DISPOSITIVO DI BLOCCO PER PORTE AUTOMATICHE  
LANDING DOOR LOCKING DEVICE

Fascicolo: 06  
Sezione: AA  
Parte: 01  
Revisione: 0  
Pagina: 10 / 10  
Data: 11.02.1999

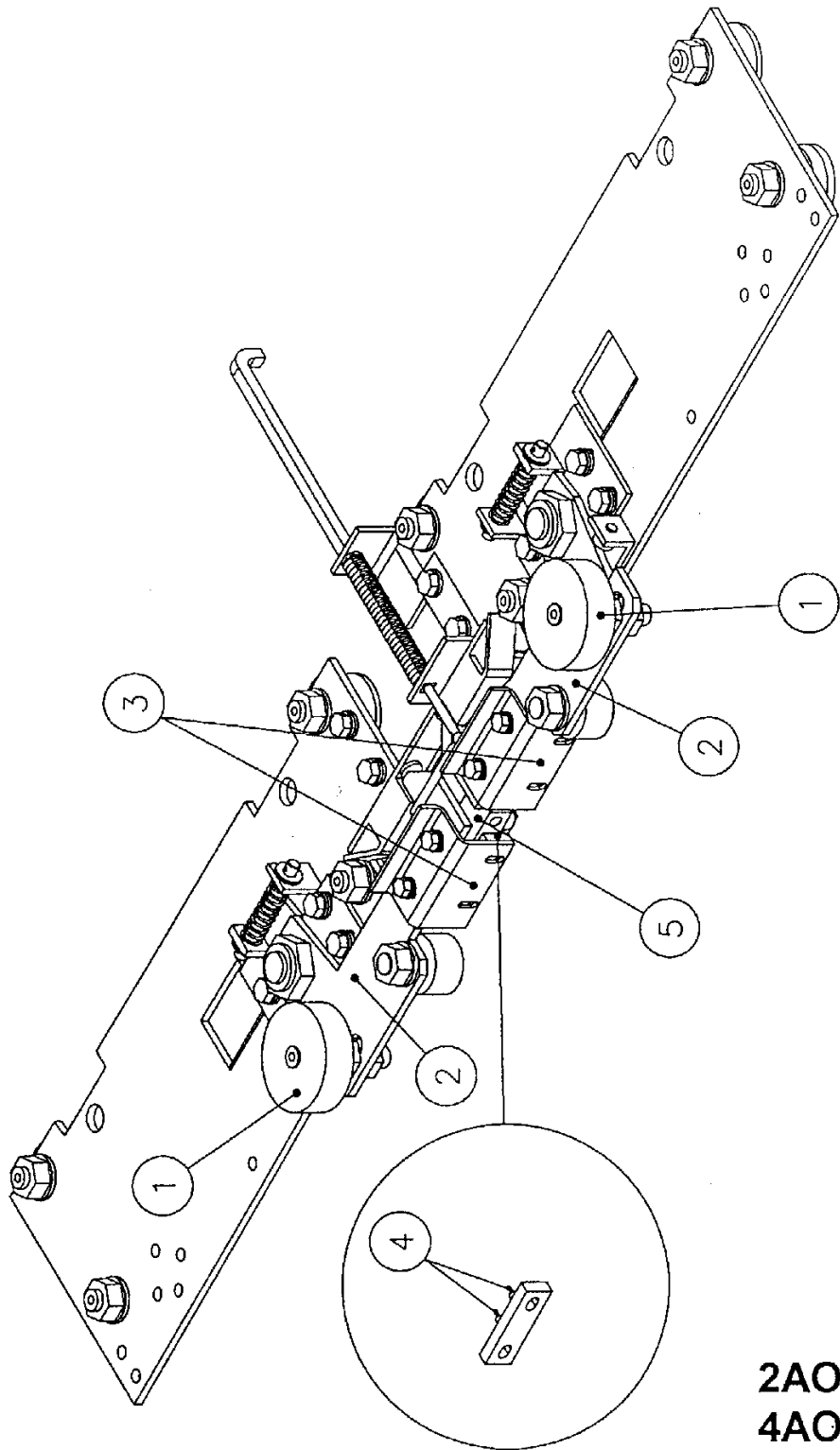
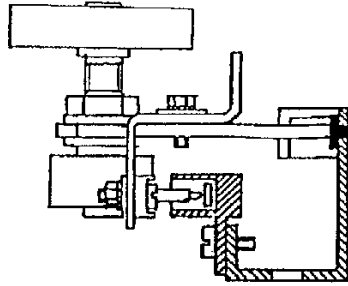


Fig.2

Section 10.4

# Landing Door Lock Beak Settings I.G.V. Auto 2 Panel Doors

Section of lock contact showing beak contact adjusted to enter centrally



Section A - A

Min. clearance 1mm on both contacts to top edge of interlock

