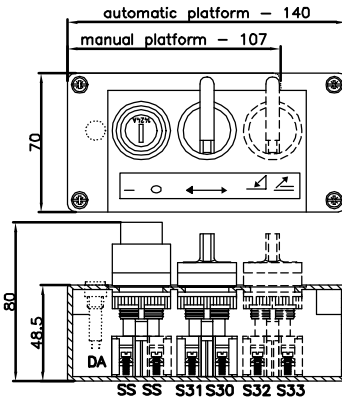
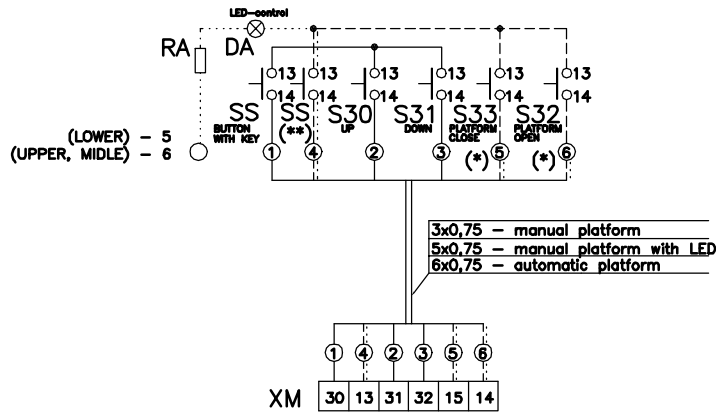
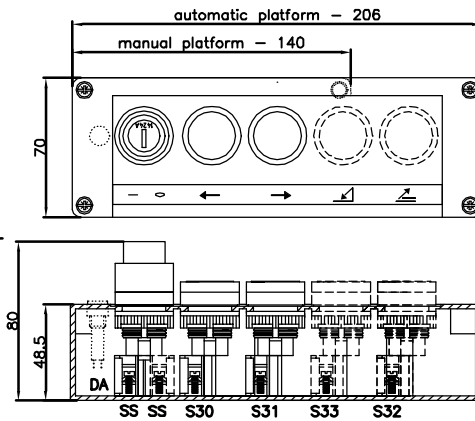


LANDING CONTROL UNIT
WITH KNOBS



LANDING CONTROL UNIT
WITH BUTTONS

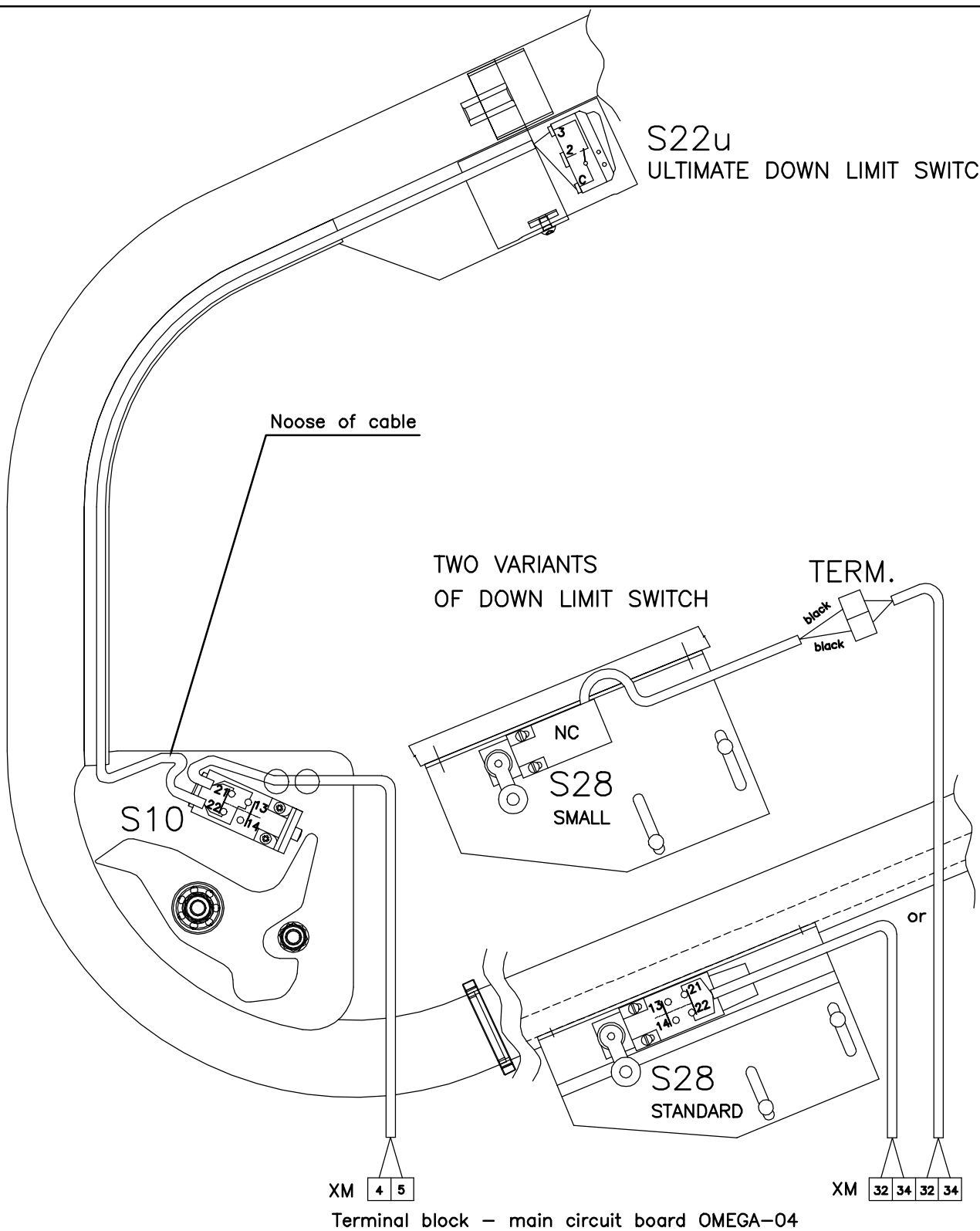


Terminal block – main circuit board OMEGA-04

- (*) automatic platform only
- (**) automatic platform or manual with LED-control only
- Dashed lines – if starlift is with automatic platform
- Dotted lines – if external control unit is with LED-control

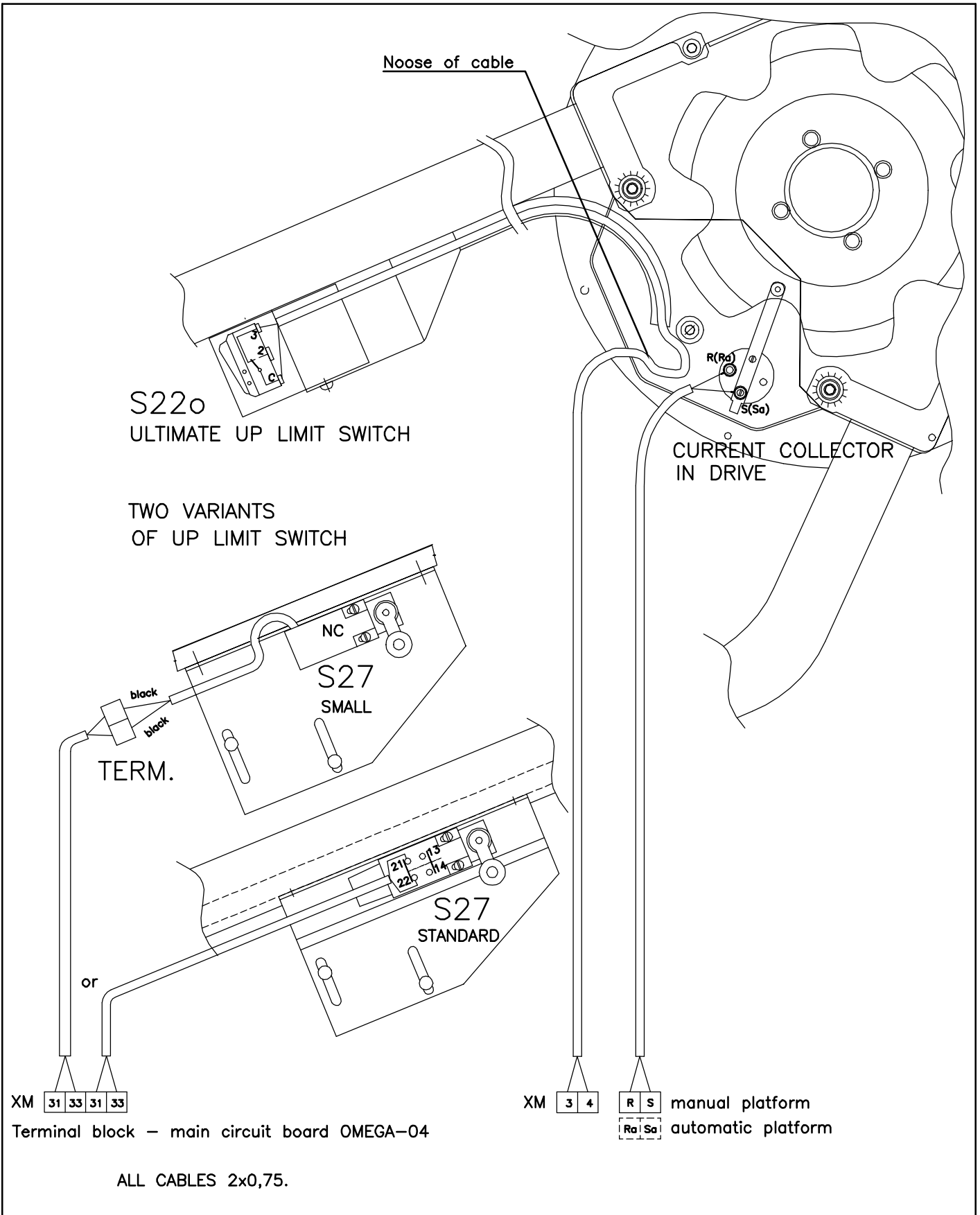
G:\dwg\ti\omega\schaltpläne\el_installation_omega_04_englisch.dwg		
Type OMEGA		Version: 1.2
Specification	LANDING CONTROL UNIT Wall-mounted	Drawing No: E011

S22u
ULTIMATE DOWN LIMIT SWITCH



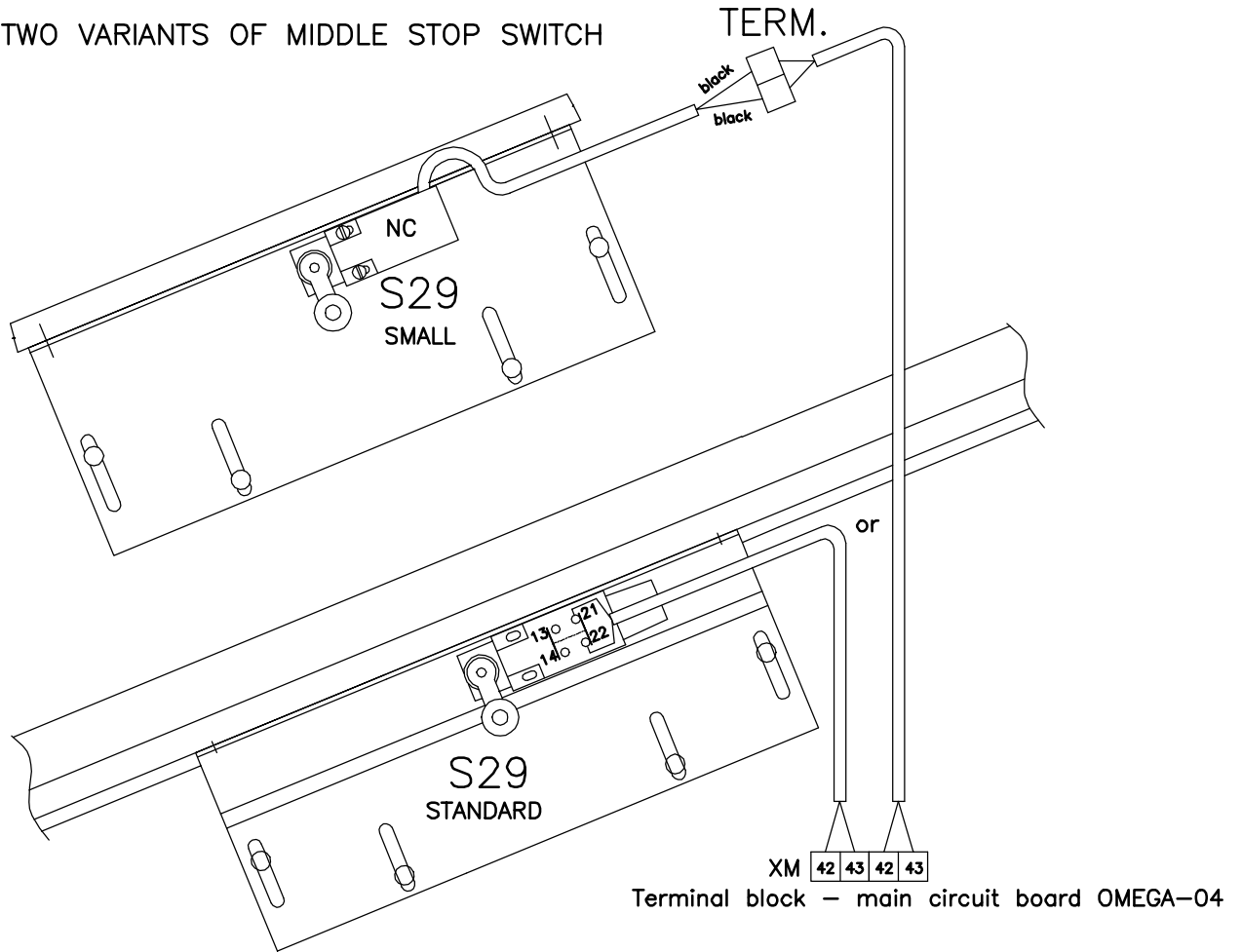
ALL CABLES 2x0,75.

G:\dwg\tl\omega\schaltpläne\el_installation_omega_04_englisch.dwg		
Type OMEGA		Version: 1.2
Specification	LOWER LANDING	Drawing No: E012



G:\dwg\tl\omega\schatpläne\el_installation_omega_04_englisch.dwg		
Type OMEGA	Specification	Version: 1.2
	UPPER LANDING	Drawing No: E013

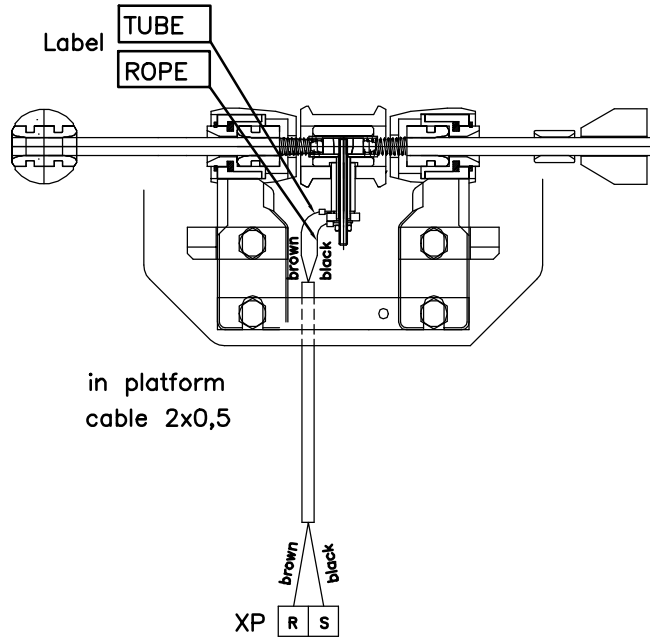
TWO VARIANTS OF MIDDLE STOP SWITCH



ALL CABLES 2x0,75.

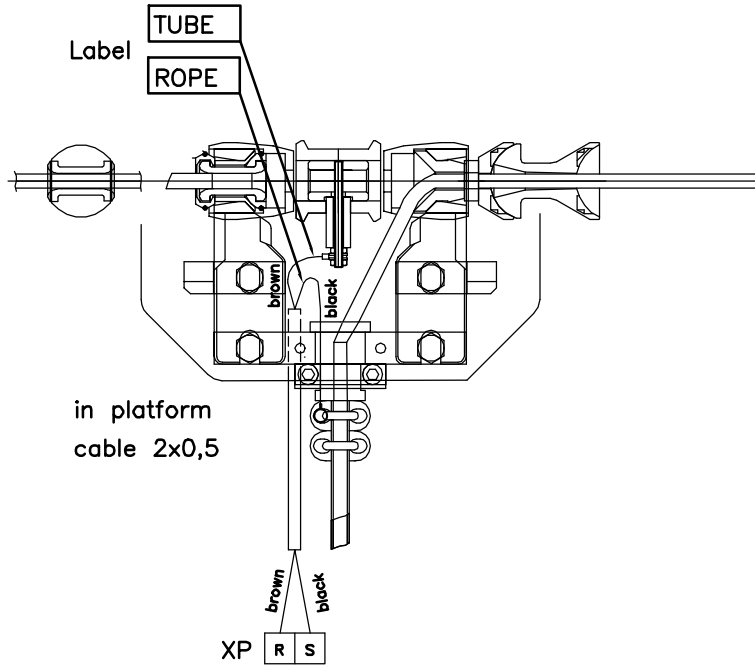
G:\dwg\t\omega\schaltpläne\el_installation_omega_04_englisch.dwg		
Type OMEGA		Version: 1.2
Specification	MIDDLE LANDING	Drawing No: E014

BIG GEAR DRIVE



Terminal block – main circuit board OMEGA-04

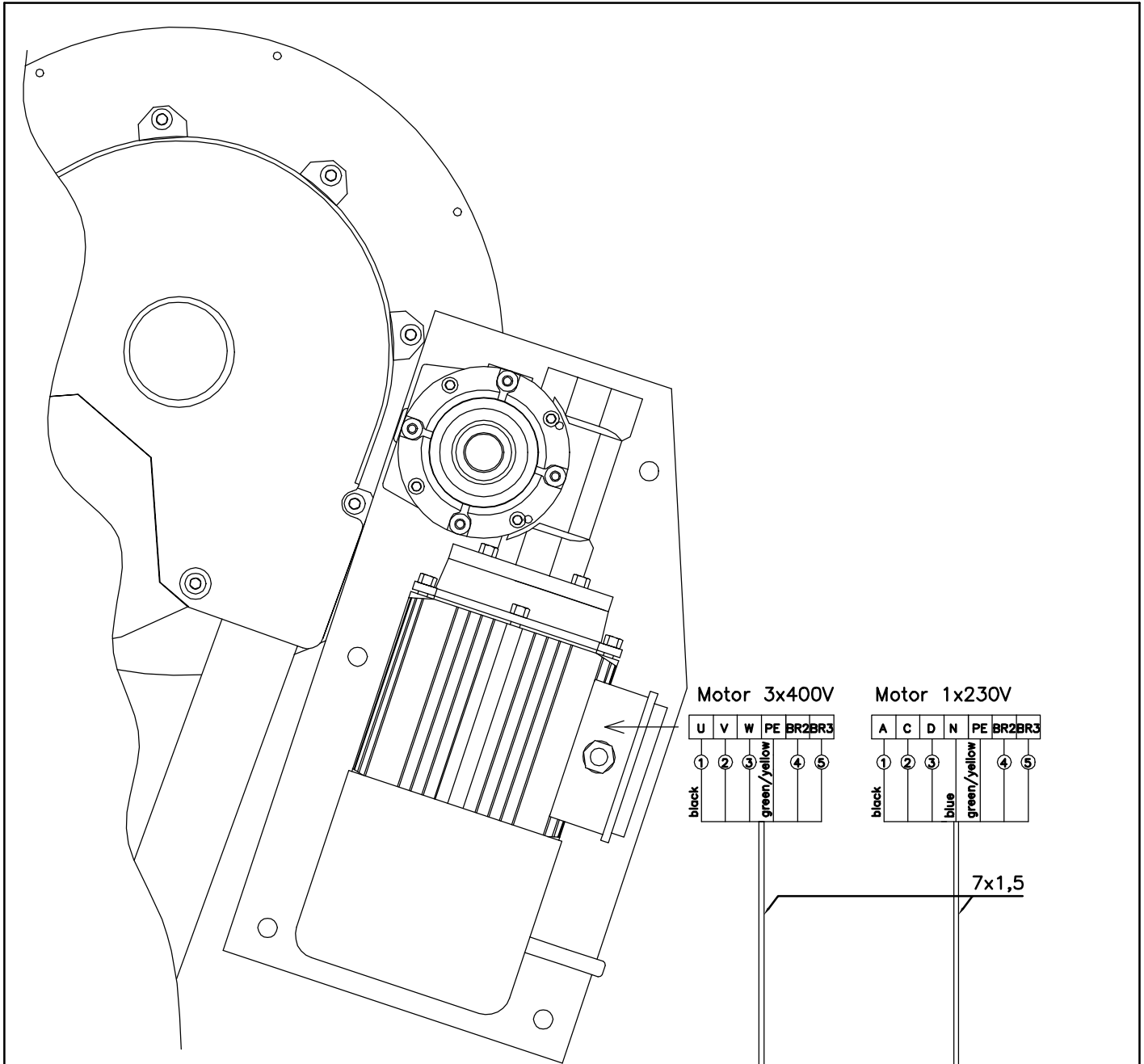
DRIVE STANDARD



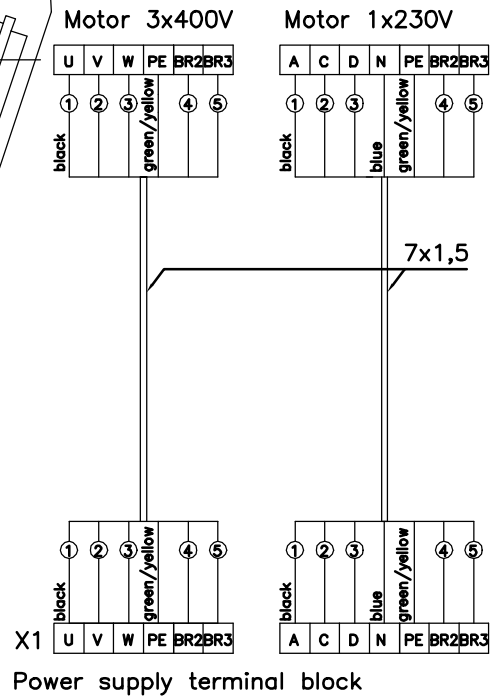
Terminal block – main circuit board OMEGA-04

SHEET IRON CASING MUST BE MONTED CAREFULLY – RISK OF CABEL DAMAGE

G:\dwg\ti\omega\schaltpläne\el_installation_omega_04_englisch.dwg		
Type OMEGA		Version: 1.2
Specification	CURRENT COLLECTOR – PLATFORM	Drawing No: E015



Attention:
 After the motor is connected into the circuit, check the direction of rotation! If the lift goes down - by pressing the up-button - the motor connections 1 and 2 (U/V by 400V A/C by 230V) have to be exchanged!
 Never exchange the connections on the control units!
 Note: If contactor K1 is activated, the lift have to go up!



G:\dwg\tl\omega\schaltpläne\el_installation_omega_04_englisch.dwg

Type OMEGA

Version: 1.2

Specification

MOTOR
 Drive Standard

Drawing No:

E016