

Waiver:

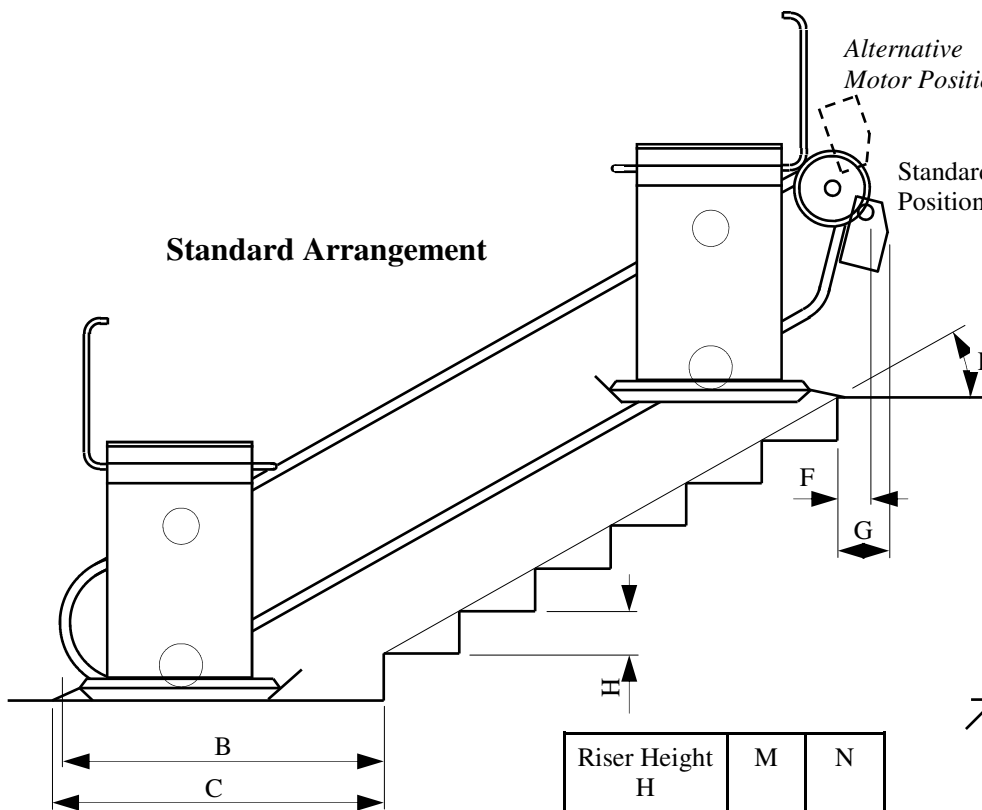
This data sheet is for guidance only and must not be used for proper working drawings. Please contact Stannah Lifts for particular details before proceeding. Owing to our policy of continual improvement we reserve the right to alter specifications and dimensions without prior notice.

For guidance only

THE STANNAH STAIRISER CR

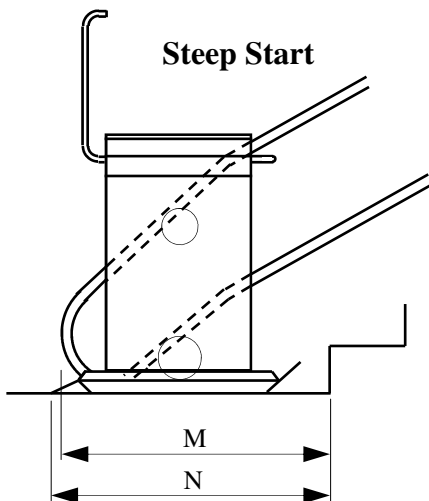
Curved Rail
Wheelchair Platform Stairlift
Rail & Platform Projections

Stannah

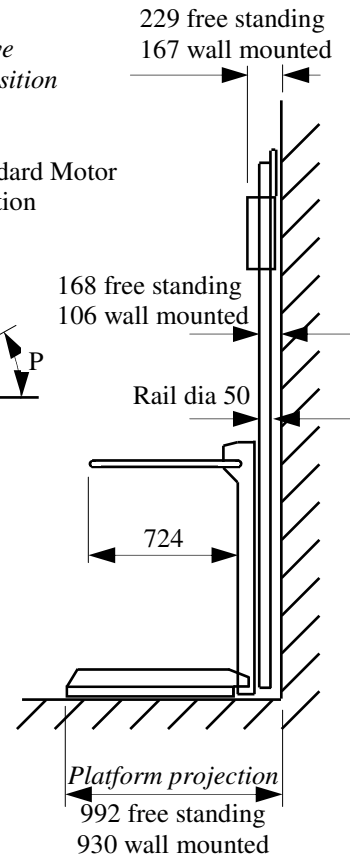


B = Rail Projection
C = Platform Projection

Riser Height H	M	N
150	1044	1231
160	1053	1240
170	1062	1249
180	1071	1258
190	1080	1267
200	1089	1276

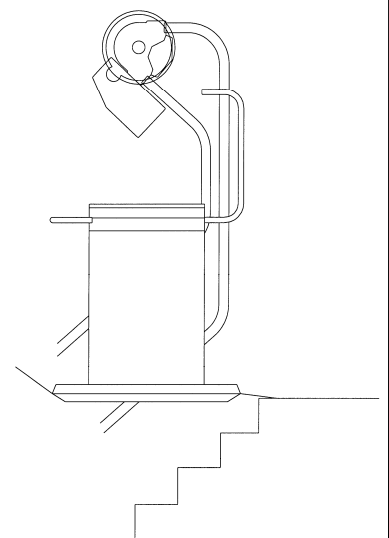


Stair Angle P	F	G	B	C
25°	234	399	1305	1441
30°	253	376	1249	1379
35°	212	361	1178	1340
40°	260	350	1130	1298
45°	310	338	1073	1260



End View

Gooseneck Drive



- All dimensions in mm.
- Dimensions C & N are applicable for the recommended end ramp length of 200mm; each measurement C & N is reduced by 50mm if 150mm ramps are specified.
- Platform Projection dimensions apply to conditions where there is no facing wall - see Information Sheet ACL 511 for clearances otherwise.
- Steep Start is useful when space at lower landing is restricted.
- Alternative Motor Position achieves reduced projection beyond top nose - dimension F shows applicable measurement.
- Gooseneck geometry achieves zero projection beyond top nose.
- Headroom clearances are an important consideration when assessing suitability of a platform stairlift - see Information Sheet ACL 514 for details.

INFORMATION SHEET
No. ACL 510
09.08.18