

Midilift Work Platform



Installation Guide

Contents

1	INTRODUCTION	3
2	SCOPE OF USE	3
3	INSPECTION SCHEDULE	3
4	PLATFORM COMPONENTS	4
5	BACK FRAME ASSEMBLY	5
6	ATTACHING THE BACK FRAME ASSEMBLY TO THE LIFT CARRIAGE	6
7	PLATFORM DECK INSTALLATION	7
8	LADDER INSTALLATION	8
9	SIDE HANDRAILS INSTALLATION	10
10	FRONT HANDRAILS INSTALLATION	11
11	TOE GUARD INSTALLATION	12
12	USE	13
13	DISASSEMBLY	13
14	APPENDIX A - APPROVED MODIFICATIONS (INFORMATIVE)	13
15	DOCUMENT HISTORY	13

1 Introduction

The purpose of this manual is to provide information as to the correct assembly and use of the Midilift Work Platform, highlighting key points and safety procedures to ensure that the platform is installed and removed safely, and installation of the Midilift product can be done smoothly, safely and efficiently.

Working on lifts can be dangerous and therefore safe practices for all those working on lifts are essential. British Standard BS7255 (**2012 Code of Practice for Safe working in lifts**) recommends safe practices for those working on all types of lift and should be referred to for guidance.

Working at Heights can be dangerous. The Work at Height Regulations 2005 recommends safe working practices and should be referred to for guidance.

The Midilift Work Platform complies (where applicable) with BS & CEN requirements, HSE guidance notes (including LOLER) & statutory requirements.

2 Scope of Use

The Work Platform can be used on the following Midilift products:

SL, GL, SLplus, XLplus, *Piccolo (optional)*

The Work Platform clips together in the same way for all products. The hooks on the Work Platform attach directly to the lift carriage on SL and GL models.

The images in this manual depict the use of the Work Platform on the Midilift SL/GL carriage. Refer to the relevant cabin model installation manual (SLplus, XLplus, Piccolo) for details of how the platform attaches to the lift carriage.

The Work Platform must not be used (or adapted for use) on any other product/equipment.

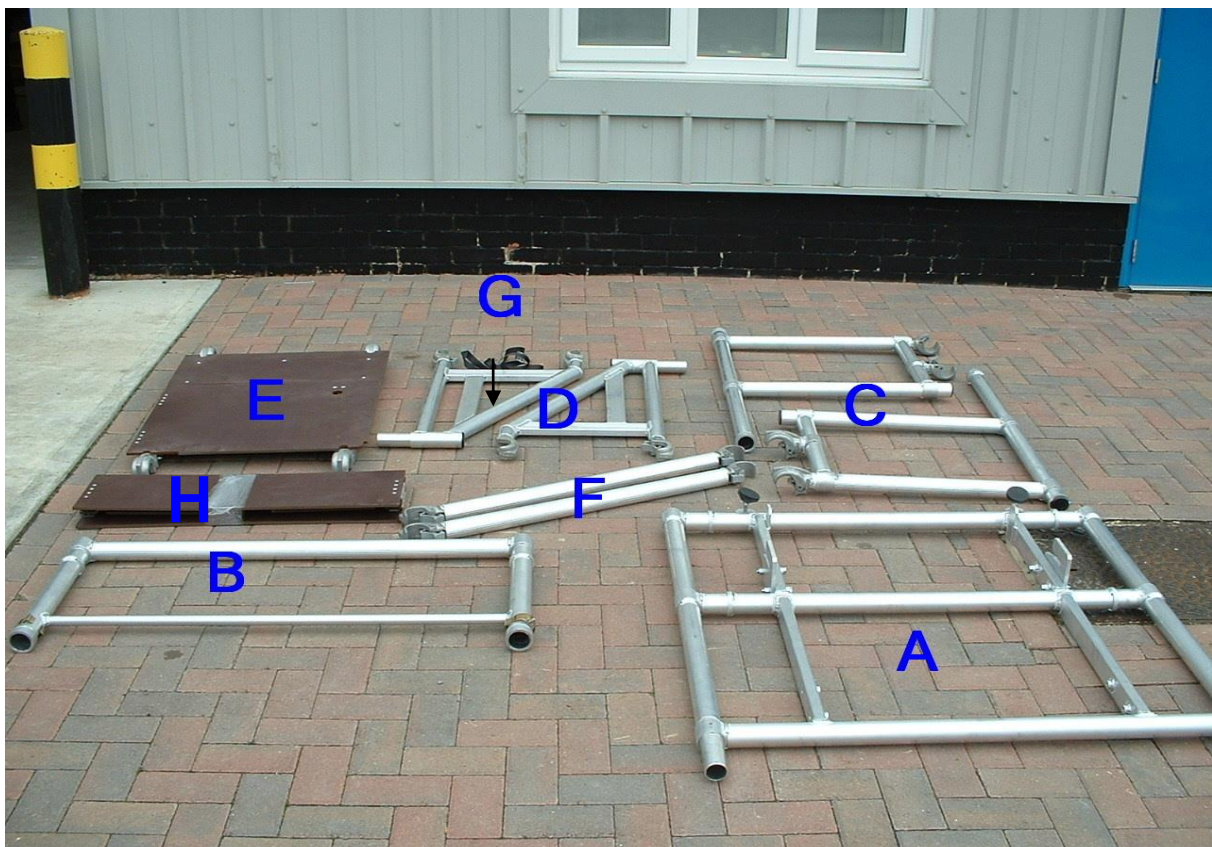
3 Inspection Schedule

The Work Platform must be inspected before each use and formally inspected every 6 months by the custodian of the Work Platform.

4 Platform Components

Description	Weight	Qty
A. Back Frame	10.75 kg	1
B. Rear Handrail	2.33 kg	1
C. Side Handrails (handed)	3.67kg each	2 (left & right hand)
D. Diagonal Platform Supports	3.58kg each	2
E. Platform Deck	8.41kg	1
F. Front Handrails	1.48kg each	2
G. Ladder Strap	0.12kg	1
H. Toe Guard	4.55kg	1

Total weight when fully assembled is 43.62kg



NB. All PPE appropriate to the site conditions should be worn at all times during the installation of the lift, and the assembly of the work platform.

5 Back Frame Assembly

Adjust Hook positions as required.

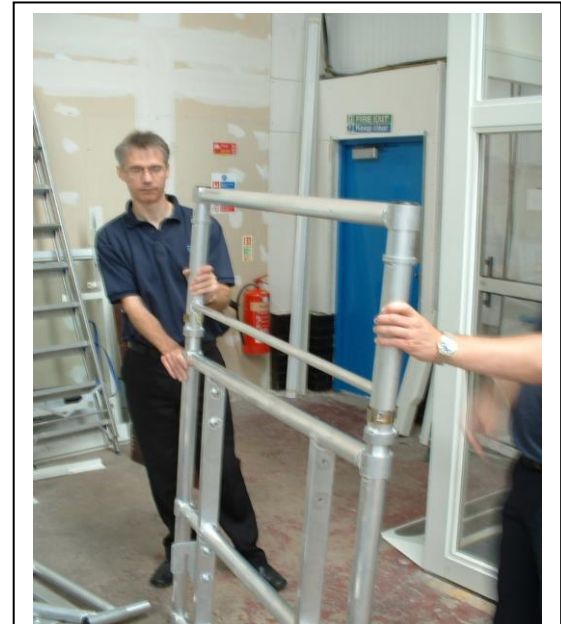
Typically, the upper position is used for longer travel SL carriages (above 5m).

Hook Positions



Assemble Rear Handrail (B) to the Back Frame (A).

Place the handrail over the spigots on the back frame and lock in place using the spring clips fitted to the handrail.

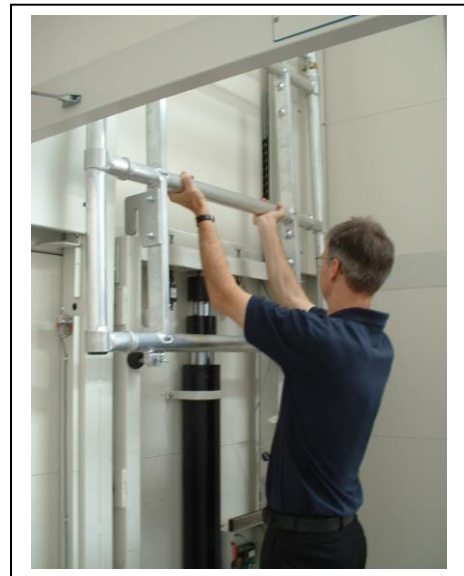


Ensure pin is fully located in the hole on both sides.



6 Attaching the Back Frame assembly to the lift carriage

Hook the Back Frame assembly over the top of the lift carriage.
Total weight of assembly is 13.08kg.



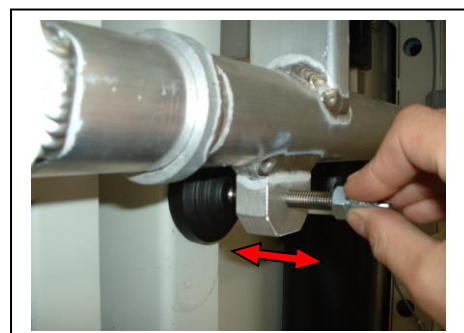
Ensure the Hooks are fully located in the box section of the carriage.

Note: On cabin lift models the platform hooks on to independent mounting brackets at the top of the carriage - see SLplus & XLplus installation manuals for details.



Using the adjustable pads, adjust the level of the back frame as required.

Note: On cabin lift models the bottom of the back frame is fastened to independent mounting brackets on the carriage using the threaded stud of the pads - see SLplus & XLplus installation manuals for details.



7 Platform Deck installation

Assemble the Diagonal Platform Supports (D) to the Back Frame assembly.

Ensure the upper clip is secure and fully engaged.

Clip



Do this for both supports.



Place the Platform Deck (E) on top of the supports. Pass the platform up between the diagonal supports and locate the platform on the top of each support with the backs of the locating cups facing upwards.

IMPORTANT NOTE:

- Ensure that the spring-loaded security lock on one of the locating cups, supporting the platform deck, is fully engaged before accessing the platform. If the platform deck is not fitted with a security lock (manufactured prior to 2017) then the deck must be suitably lashed in position to prevent accidental displacement.
- Ensure that the trapdoor hinges are furthest away from the back frame.



Platform deck
security lock (if fitted)

Trapdoor
hinges

8 Ladder Installation

Using a telescopic ladder, or another ladder of suitable length, place the ladder against the ladder support rail on the rear (from the door side) of the two diagonal supports.

Ensure the Angle of the ladder is not too steep or shallow as to hinder access to the trap door. Ideally the ladder should be at an angle of 75° or 1 in 4. The base of the ladder should be resting square on the lift platform.

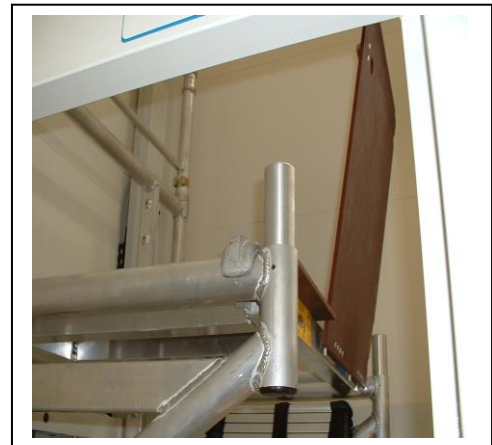


Using the Ladder Strap (G) provided tie the ladder off onto the ladder support bar.

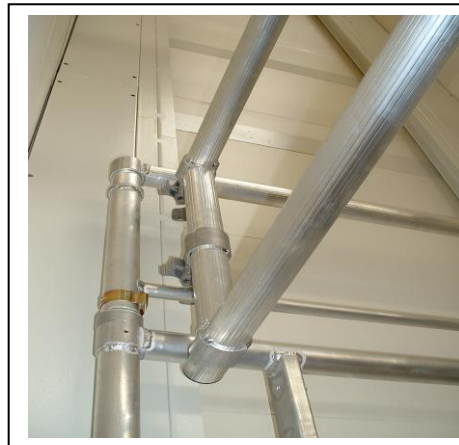


9 Side Handrails installation

From the ladder, open the trap door on the platform deck.
Working from the ladder, one at a time place the Side Handrails
over the spigots on the platform supports and clip into place.
Do not climb onto the platform at this time.



The Side Handrails (C) are handed. Ensure they are fitted to the correct side of the deck - the backs of the hooks should be facing in towards the platform as per the images below.



Firmly lock each Side Handrail into place on the Rear Handrail. Ensure that both clips are fully snapped in place.

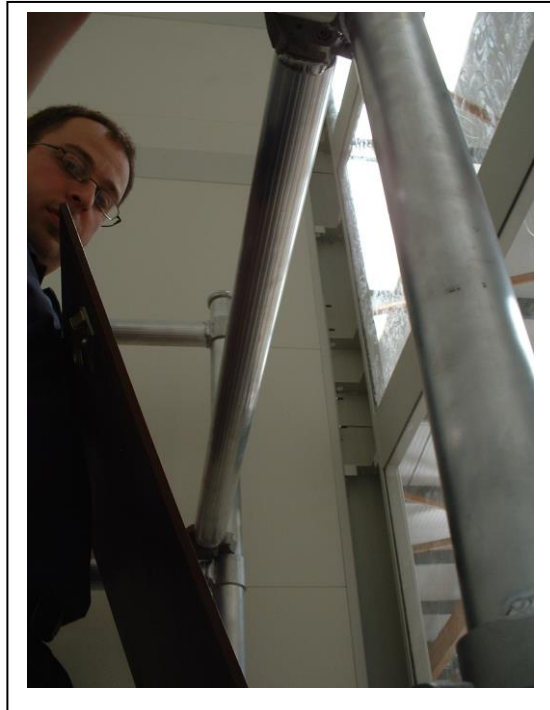


10 Front Handrails installation

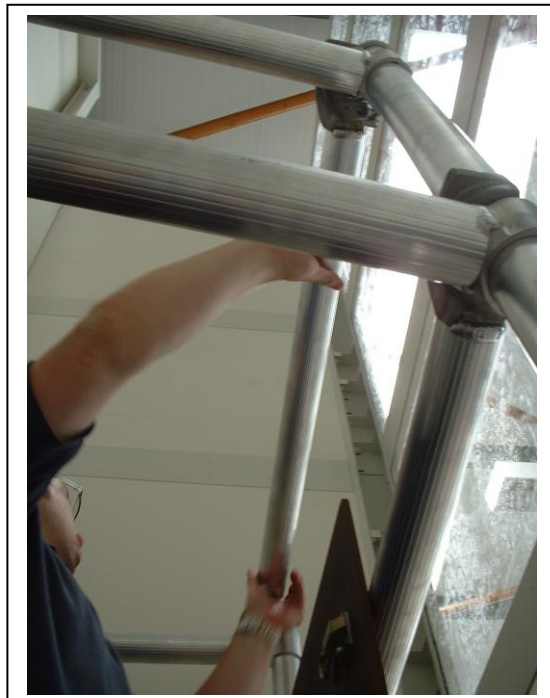
Working from the ladder, starting with the lower handrail. One at a time place the front handrails onto the side handrails as shown in the picture.

Ensure the Handrails are fitted with the backs of the hooks facing in towards the platform. Firmly lock each Front Handrail into place on each side handrail. Ensure that both clips are fully snapped in place.

Lower Handrail

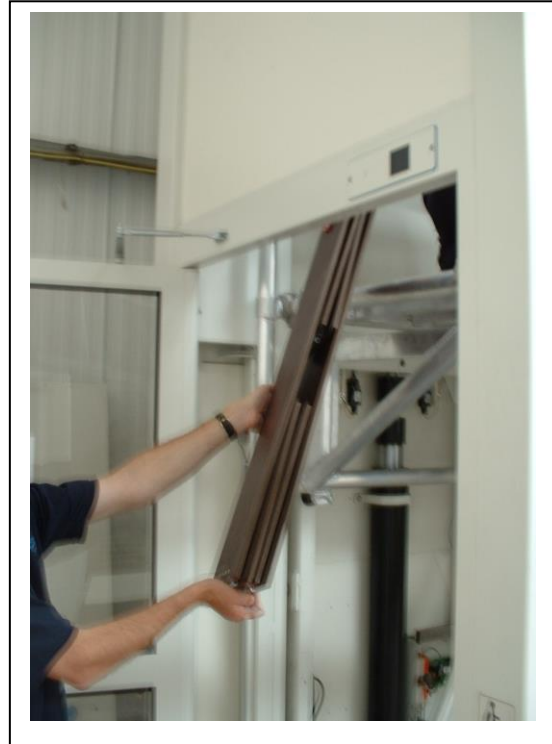


Upper Handrail

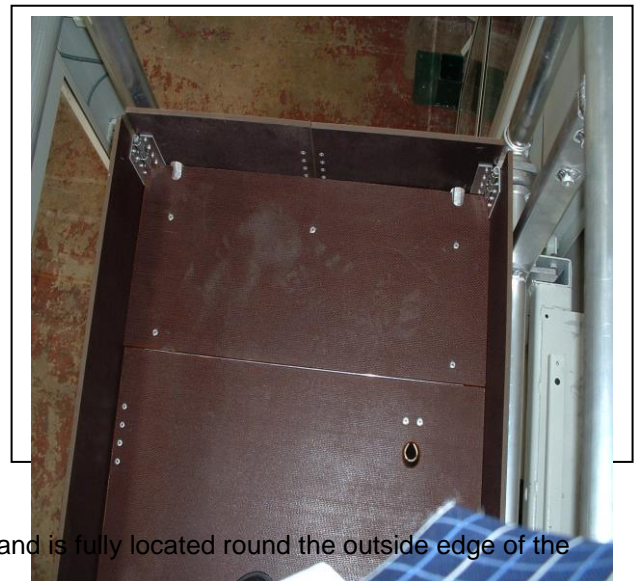


11 Toe Guard installation

With all the handrails in place, one engineer should gain access to the platform, closing the trapdoor behind. The Toe Guard should be passed up to the platform.



The Toe Guard is hinged, and is opened out whilst standing on the platform deck.



Ensure the Toe Guard is placed on the correct way up, and is fully located round the outside edge of the platform deck.

12 Use

Once assembled, the Work Platform can be fully accessed from the lift platform using the ladder. The platform is capable of supporting two individuals, plus tools and equipment up to a maximum capacity of 222 kg. Any damaged components must be returned to Stannah for repair or replacement. No unauthorised modifications are permitted.

13 Disassembly

Disassembly is the reverse of the assembly method.

14 Appendix A - Approved Modifications (informative)

The distance between the inside faces of the hook plates was increased from 690 to 700mm to permit the platform to be used on all Midilift models (at 690mm it only fitted the SL & GL carriage). The approved modification kit was PROT1595B-2. See Technical Bulletin TB183 for details of this modification.

15 Document History

Date	Name	Changes
16/08/2005	PG	Unknown
21/06/2010	Unknown	Unknown
05/05/2022	R. Christopher	'Contents', 'Scope of Use', 'Inspection Schedule', 'Appendix A' & 'Document History' sections added. SWL changed to 222kg (derated from 272kg to ensure removable lifting beam SWL is not exceeded on XLplus applications). Reference to LOLER added in 'Introduction' section. Format revised in line with other Midilift documentation.
01/11/2022	P. Jeffery	Section 7: Platform Deck Installation – Important Note added for ensuring security lock engagement on crossmember on underside of platform deck following IR34491.