

Waiver:

This data sheet is for guidance only and must not be used for proper working drawings. Please contact Stannah Lifts for particular details before proceeding. Owing to our policy of continual improvement we reserve the right to alter specifications and dimensions without prior notice.

For guidance only

THE STANNAH MIDILIFT PX

Wheelchair Vertical Platform 1100 x 1400
Loadings for Travel Upto 2m



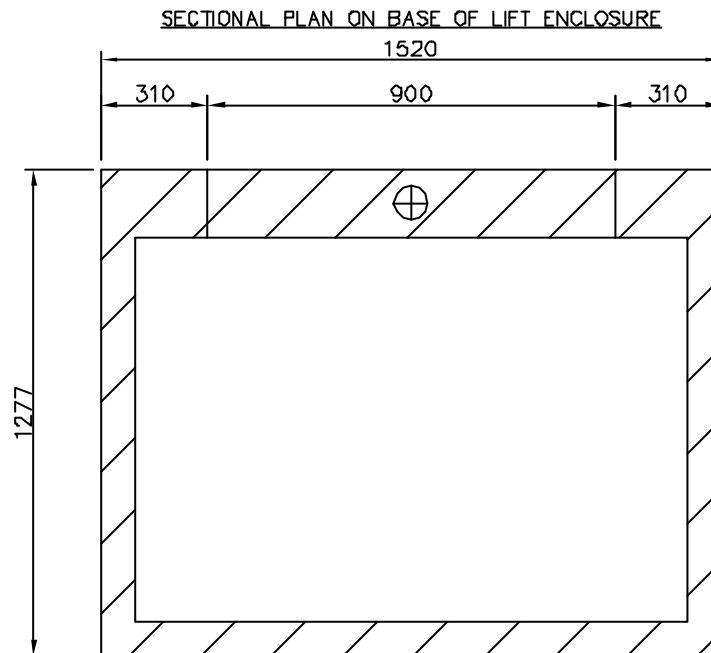
LOADINGS DETAIL VERTICAL LIFT TYPE AVL ('MIDILIFT')

PLATFORM 1100mm x 1400mm

CONTRACT LOAD 300kg

APPLIES TO LIFTS SHOWN ON DATA SHEETS AVL-120, AVL-130 & AVL-140

NOTE: LOADINGS GIVEN APPLY TO APPLICATIONS WITH TRAVELS UPTO 2m



VERTICAL LOADS:

1. MASS OF ENCLOSURE = 540kg DISTRIBUTED OVER SURFACE AREA OF STRUCTURE (0.343m²)
 2. 1040kgf POINT (DEAD) LOAD AT ⊕ DUE TO PLATFORM OPERATION & CONTRACT LOAD.* BASE PLATE 900mm x 100mm x 9mm THK.
- * LOAD CALCULATED AT TWICE LIVE LOAD.

WALL FIXINGS:

- 2 OFF BELOW UPPER THRESHOLD – 40kgf PULL-OUT EACH. (NOTE: THESE ARE FITTED WHEN POSSIBLE & TO STEADY STRUCTURE ONLY)
- 1 PAIR OF GUIDE FIXINGS, 1000mm HORIZONTAL PITCH – 100kgf PULL-OUT EACH. FIXINGS ARE POSITIONED 750mm BELOW TOP OF GUIDES. GUIDES HEIGHT DEPENDANT ON TRAVEL.

NOTE: WALL FIXING DETAIL MAY VARY DUE TO SITE CONDITIONS – DATA GIVEN FOR GUIDANCE ONLY.

INFORMATION
SHEET
No. AVL 485
04.04.02