

Waiver:

This data sheet is for guidance only and must not be used for proper working drawings. Please contact Stannah Lifts for particular details before proceeding. Owing to our policy of continual improvement we reserve the right to alter specifications and dimensions without prior notice.

For guidance only

# THE STANNAH MIDILIFT PX

Wheelchair Vertical Platform 900 x 1250  
Loadings for Travel 2m & Upto 4m



## LOADINGS DETAIL

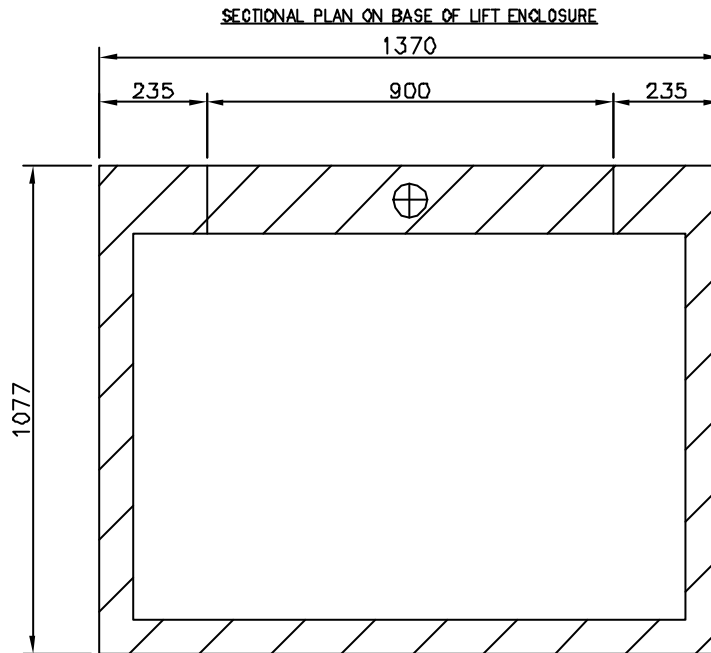
### VERTICAL LIFT TYPE AVL ('MIDILIFT')

PLATFORM 900mm x 1250mm

CONTRACT LOAD 300kg

NOTE:

LOADINGS GIVEN APPLY TO APPLICATIONS WITH TRAVEL ABOVE 2m & UPTO 4m



VERTICAL LOADS:

1. MASS OF ENCLOSURE = 540kg DISTRIBUTED OVER SURFACE AREA OF STRUCTURE AS HATCHED (0.298m<sup>2</sup>)
2. 1040kgf POINT (DEAD) LOAD AT ⊕ DUE TO PLATFORM OPERATION & CONTRACT LOAD.\*  
(BASE PLATE 900mm x 100mm x 9mm THICK.) \*STATIC LOAD CALCULATED AT TWICE LIVE LOAD.

WALL FIXINGS:

- 2 OFF BELOW UPPER THRESHOLD – 40kgf PULL-OUT EACH. (NOTE: THESE ARE FITTED ONLY TO STEADY STRUCTURE)
- 1 PAIR OF GUIDE FIXINGS, 1000mm HORIZONTAL PITCH – 100kgf PULL-OUT, 750mm FROM TOP OF GUIDES (GUIDES HEIGHT DEPENDANT ON TRAVEL).

NOTE: FIXING POSITIONS FOR GUIDANCE ONLY – EXACT POSITIONS WILL BE SHOWN ON DRAWINGS, BASED ON TRAVEL & INDIVIDUAL INSTALLATION

INFORMATION SHEET
No. AVL 484
04.04.02