

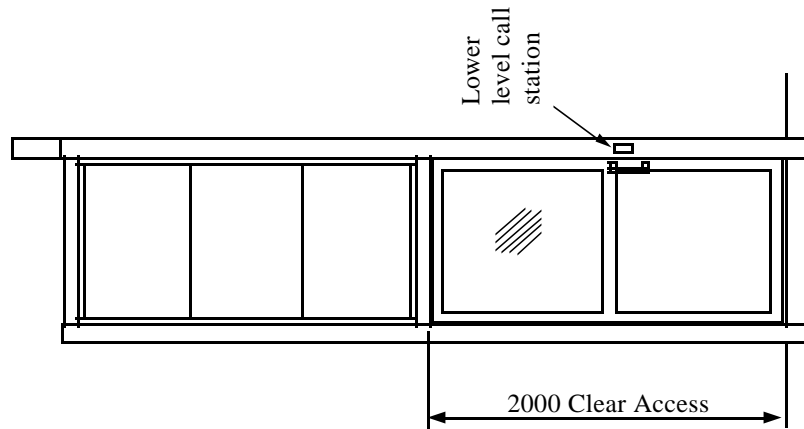
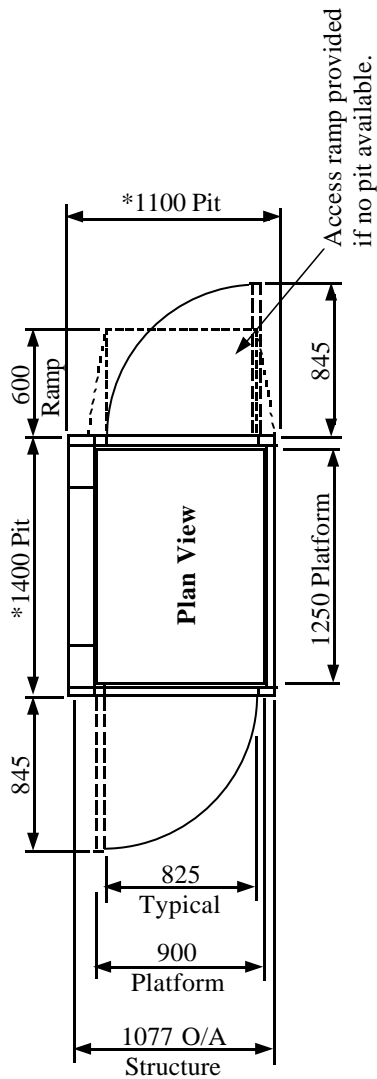
Waiver:

This data sheet is for guidance only and must not be used for proper working drawings. Please contact Stannah Lifts for particular details before proceeding. Owing to our policy of continual improvement we reserve the right to alter specifications and dimensions without prior notice.

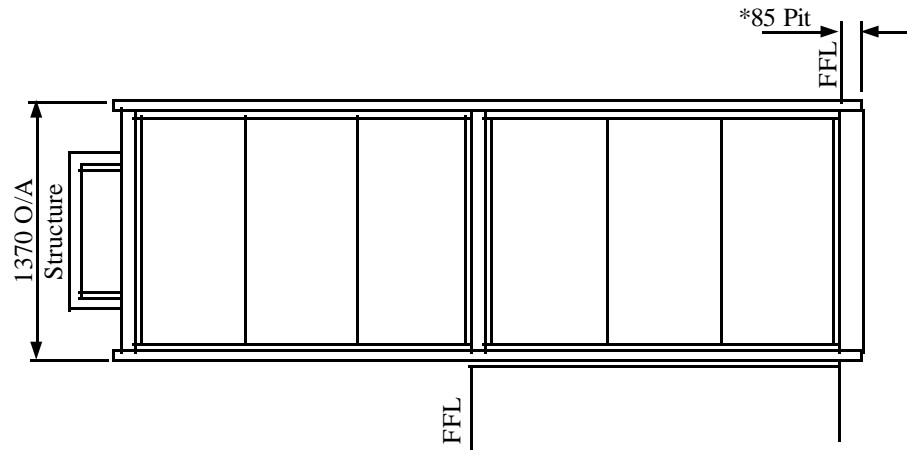
For guidance only

MIDLIFT PX

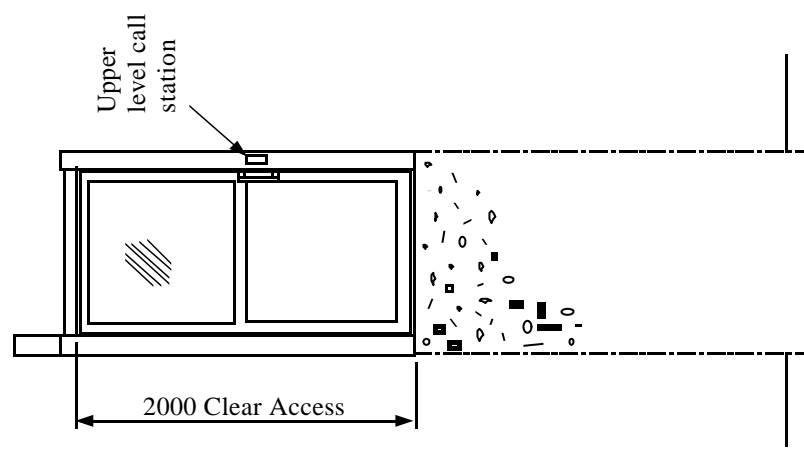
Wheelchair
Vertical Lifting Platform 900 x 1250 (Up to 4m Travel)
Through and Same Side Entry/Exit



View on Lower Entrance



Side Elevation



View on Upper Entrance

Control Equipment

The drive unit and electrical control equipment are housed in an enclosure (600mm high by 800mm wide by 300mm deep) which should be wall mounted at a minimum height of 1200mm and can be located up to 5 metres away from the lift.

**Vertical Lifting Platform Specification
Complies with BS 6440**

- Load: 300Kg
 - Drive: Single speed electro-hydraulic
 - Speed: 0.1m/sec nominal
 - Travel: Up to 4m maximum
Up to 1.98 metres unit is free standing
Above 1.98 metres unit is wall mounted
 - Handing: Optional right or left.
 - Site: Internal only
 - Power supply: Dedicated 240v single phase AC
(13A switched fused spur)
- *A pit is optional. It eliminates a ramp at the lower level.

INFORMATION SHEET
No. AVL 420
02.04.02