

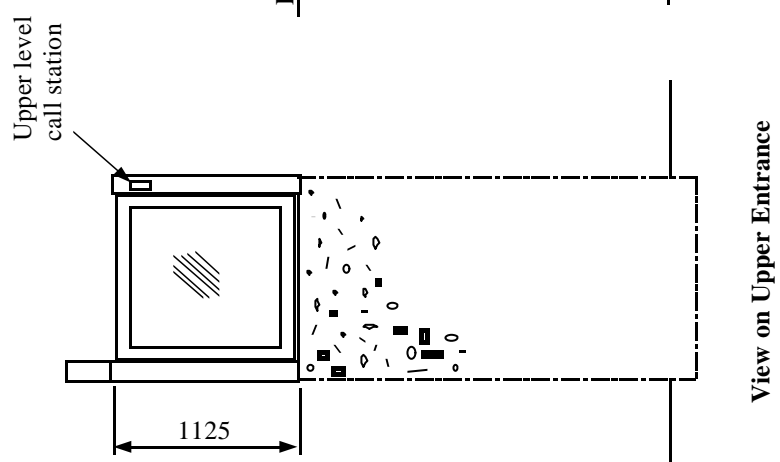
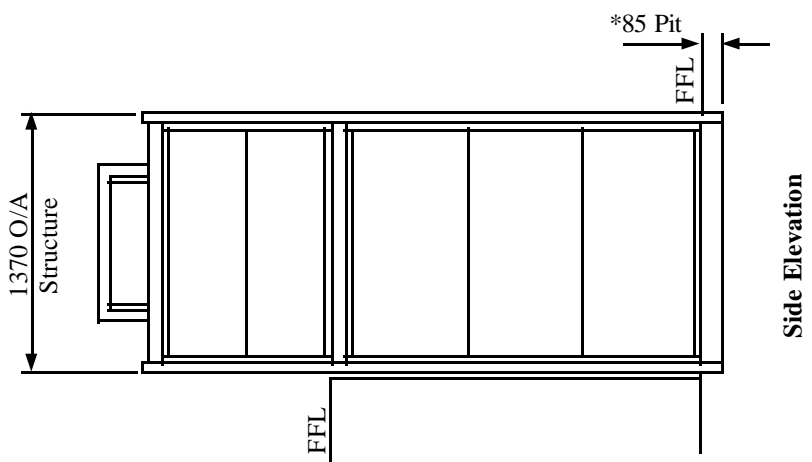
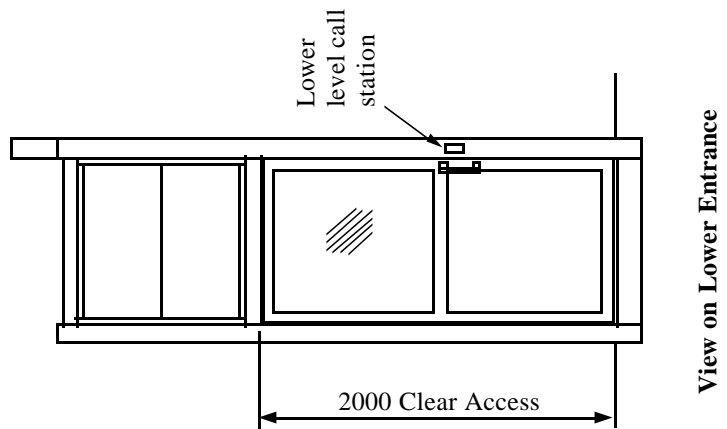
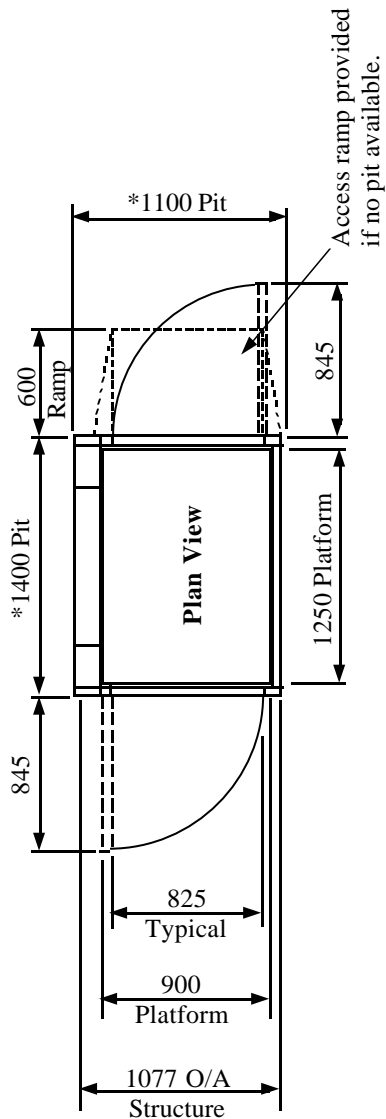
**Waiver:**

This data sheet is for guidance only and must not be used for proper working drawings. Please contact Stannah Lifts for particular details before proceeding. Owing to our policy of continual improvement we reserve the right to alter specifications and dimensions without prior notice.

For guidance only

# MIDLIFT PX

Wheelchair  
Vertical Lifting Platform 900 x 1250 (Up to 2m Travel)  
Through Entry/Exit



**Control Equipment**

The drive unit and electrical control equipment are housed in an enclosure (600mm high by 800mm wide by 300mm deep) which should be wall mounted at a minimum height of 1200mm and can be located up to 5 metres away from the lift.

**Vertical Lifting Platform Specification  
Complies with BS 6440**

Load: 300Kg  
Drive: Single speed electro-hydraulic  
Speed: 0.1m/sec nominal  
Travel: Up to 4m maximum  
Up to 1.98 metres unit is free standing  
Above 1.98 metres unit is wall mounted  
Handing: Optional right or left.  
Site: Internal only  
Power supply: Dedicated 240v single phase AC (13A switched fused spur)  
\*A pit is optional. It eliminates a ramp at the lower level.

**INFORMATION SHEET**  
**No. AVL 410**  
02.04.02