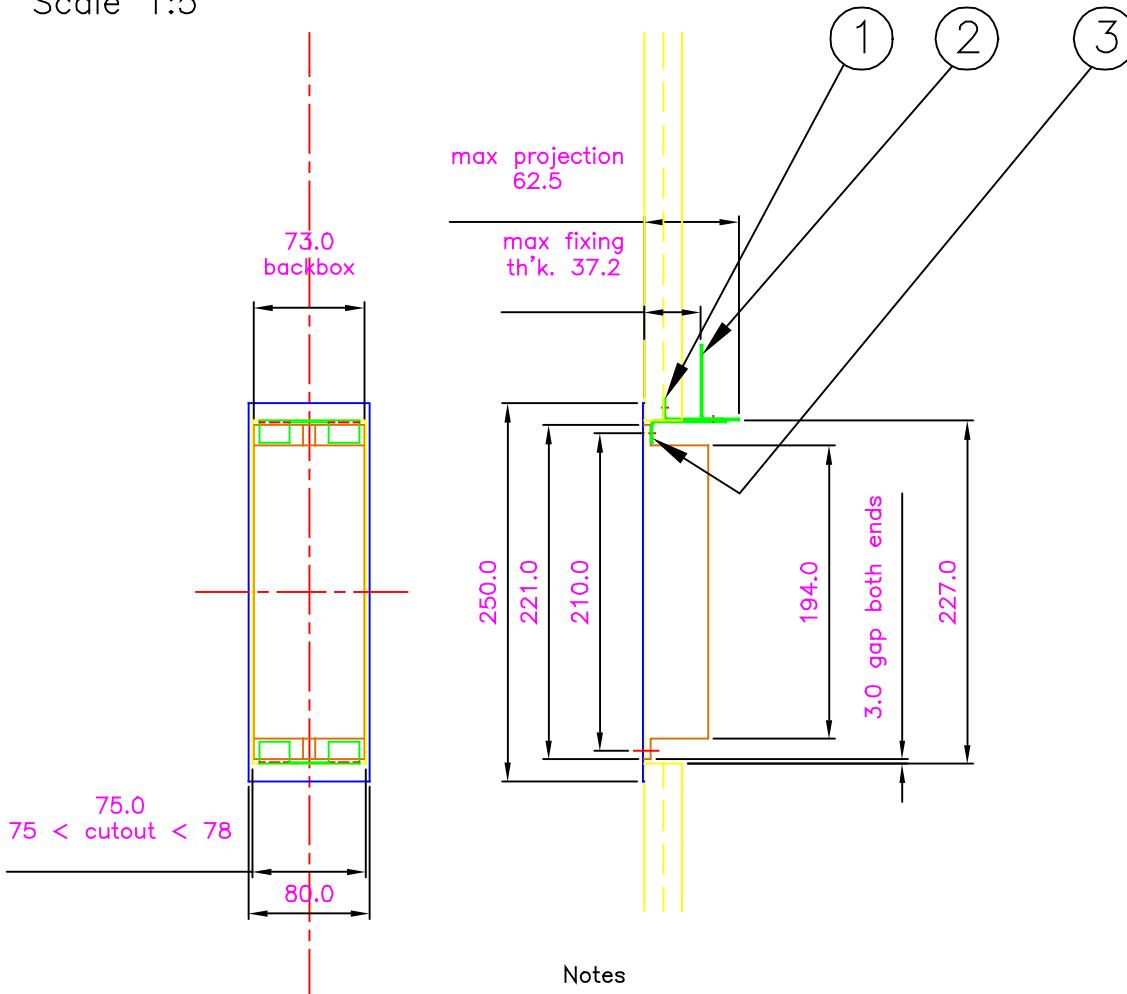


Midilift DL landing call backbox mtg.



Scale 1:5



Notes

1. Sketches show mtg. configurations of backbox. For arrangements ① & ②, use brackets fixed 'back to back' as shown (fix together with captive nut & No.10 screw).

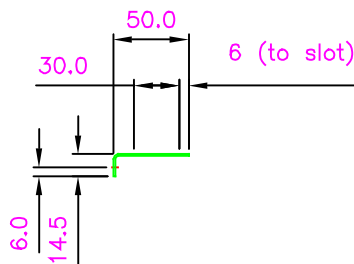
2. Brackets show fixing arrangements for different wall materials:

- ① = 1/2" dryline/plaster board
- ② = max th'k board (37.2mm)
- ③ = fixing to timber lining in masonry wall

3. Cutout size $227_{-0}^{+3} \times 75_{-0}^{+3}$; applicable with or without timber lining.

4. If timber lining provided, dims are to inside of lining. Depth of lining to be 65.

Bracket detail



Fixing kit (per landing call)

item	pt. no.	where used	qty. /end	qty. total
bracket	6500005		1/ 2	2/ 4
screw No.6x5/8"	501709	brkt to backbox & brkt to brkt ②	2/ 4	4/ 8
screw No.10x1/2"	502248	brkt to captive nut ①	2	4
screw No.8x1.25"	500886	brkt to timber lining ③ & brkt to wall ①	2	4
captive nut	513182	brkt to brkt ① & brkt to wall ②	2	4
screw No.10 x 2"	502264	brkt to wall ②	2	4
washer M4	500025	brkt to brkt ②	2	4